



Modules

Modules

Text Modules

Image Modules

Page Grid

Contact Sheet

Picture Package

Locked Image

Metadata

Settings

- **What is a module?**

A module is a construction of various elements like text- and image boxes, decoration fields, lines or colored objects.

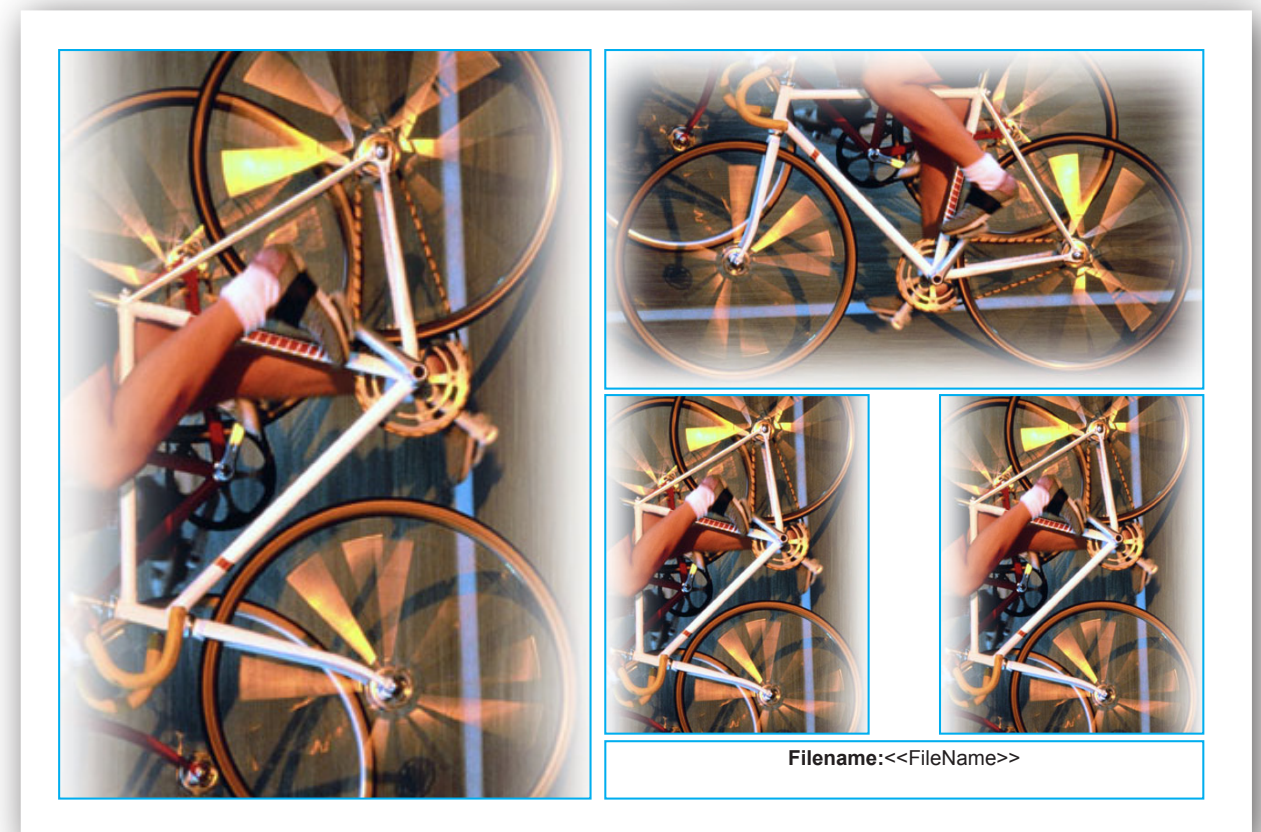
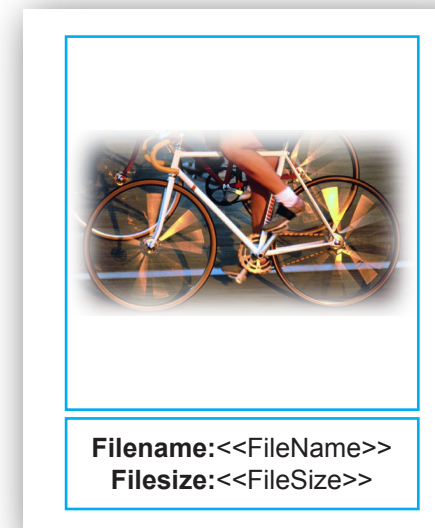
A module can contain just a single image, like in a contact sheet, or multiple images like in a picture package.

- **How to create a module**

Create image-, decoration- and text boxes with Adobe InDesigns standard tools.

- **How to save a module**

Shift-click the objects in the order you wish Contact Sheet to build the boxes, and then click the upper »Save« button in the Contact Sheet Pro palette.



Watch movie



- How to decide content for text boxes

The content of a text box is decided by applying merge code to the text box, e.g <<FileSize>>. In the given example content from the file relating to file size flows into the box. You can mix static data (data not surrounded by << >>) with variable data (data surrounded by << >>).

- Can I apply character and paragraph formatting?

Yes, the way you use InDesigns built-in features to format text, is the way your module will appear in production (WYSIWYG). All you have to do is define paragraph or character formats.

FilePath	<<FilePath>>
FileName	<<FileName>>
FileExtension	<<FileExtension>>
FileSize	<<FileSize>>
FileSizeLogic	<<FileSizeLogic>>
FileSizeResource	<<FileSizeResource>>
ExposureTime	<<ExposureTime>>
FNumber	<<FNumber>>
ExifVersion	<<ExifVersion>>
DateTimeOriginal	<<DateTimeOriginal>>
DateTimeDigitized	<<DateTimeDigitized>>
CompressedBitsPerPixel	<<CompressedBitsPerPixel>>
ShutterSpeedValue	<<ShutterSpeedValue>>
ApertureValue	<<ApertureValue>>
ExposureBiasValue	<<ExposureBiasValue>>
MaxApertureValue	<<MaxApertureValue>>
MeteringMode	<<MeteringMode>>
FocalLength	<<FocalLength>>
FlashpixVersion	<<FlashpixVersion>>
ColorSpace	<<ColorSpace>>
PixelXDimension	<<PixelXDimension>>
PixelYDimension	<<PixelYDimension>>
FocalPlaneXResolution	<<FocalPlaneXResolution>>
FocalPlaneYResolution	<<FocalPlaneYResolution>>
FocalPlaneResolutionUnit	<<FocalPlaneResolutionUnit>>
SensingMethod	<<SensingMethod>>
FileSource	<<FileSource>>
CustomRendered	<<CustomRendered>>
ExposureMode	<<ExposureMode>>
WhiteBalance	<<WhiteBalance>>
DigitalZoomRatio	<<DigitalZoomRatio>>
SceneCaptureType	<<SceneCaptureType>>
Fired	<<Fired>>
Return	<<Return>>
Mode	<<Mode>>
Function	<<Function>>
RedEyeMode	<<RedEyeMode>>
CaptionWriter	<<CaptionWriter>>
Category	<<Category>>
DateCreated	<<DateCreated>>
City	<<City>>
State	<<State>>
Country	<<Country>>
Credit	<<Credit>>
Source	<<Source>>
Headline	<<Headline>>
Instructions	<<Instructions>>
TransmissionReference	<<TransmissionReference>>
Urgency	<<Urgency>>
SupplementalCategories	<<SupplementalCategories>>



Image modules

Modules

Text Modules

Image Modules

Page Grid

Contact Sheet

Picture Package

Locked Image

Metadata

Settings

- **Image scaling**

Contact Sheet Pro scales images in two different ways - either by adjusting the image to its bounding box proportionally, or by filling the image box completely, still proportionally. We call these two scaling methods »First Scale« and »Second Scale«. You can access the buttons for »First Scale« and »Second Scale« directly from the Contact Sheet Pro palette.

- **Intelligent rotation**

By applying »Intelligent rotation« in the Contact Sheet Pro palette, images will automatically be rotated vertically or horizontally, depending on which direction optimizes image size better within the image box.

- **Image adjustment**

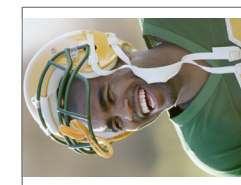
Contact Sheet Pro detects the exact position of the image used for creating the module. In automation mode, when importing images, all pictures imported into the document will inherit the adjustment settings used when initially creating the module.

First Scale

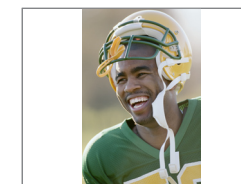
First scale: horizontal picture in horizontal picture frame



First scale: horizontal picture in vertical picture frame



First scale + no rotate: horizontal picture in vertical picture frame

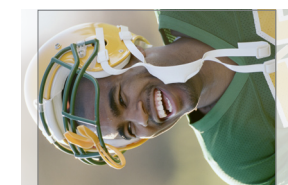


Second Scale

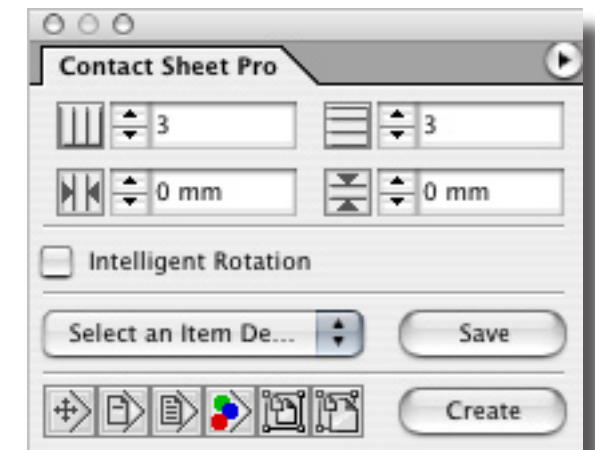
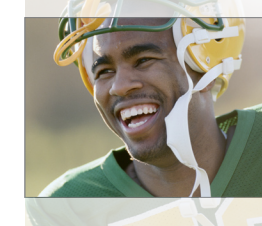
Second scale: horizontal picture in horizontal picture frame



Second scale: horizontal picture in vertical picture frame



Second scale + no rotate: horizontal picture in vertical picture frame



Watch movie



Page grid

Modules

Text Modules

Image Modules

Page Grid

Contact Sheet

Picture Package

Locked Image

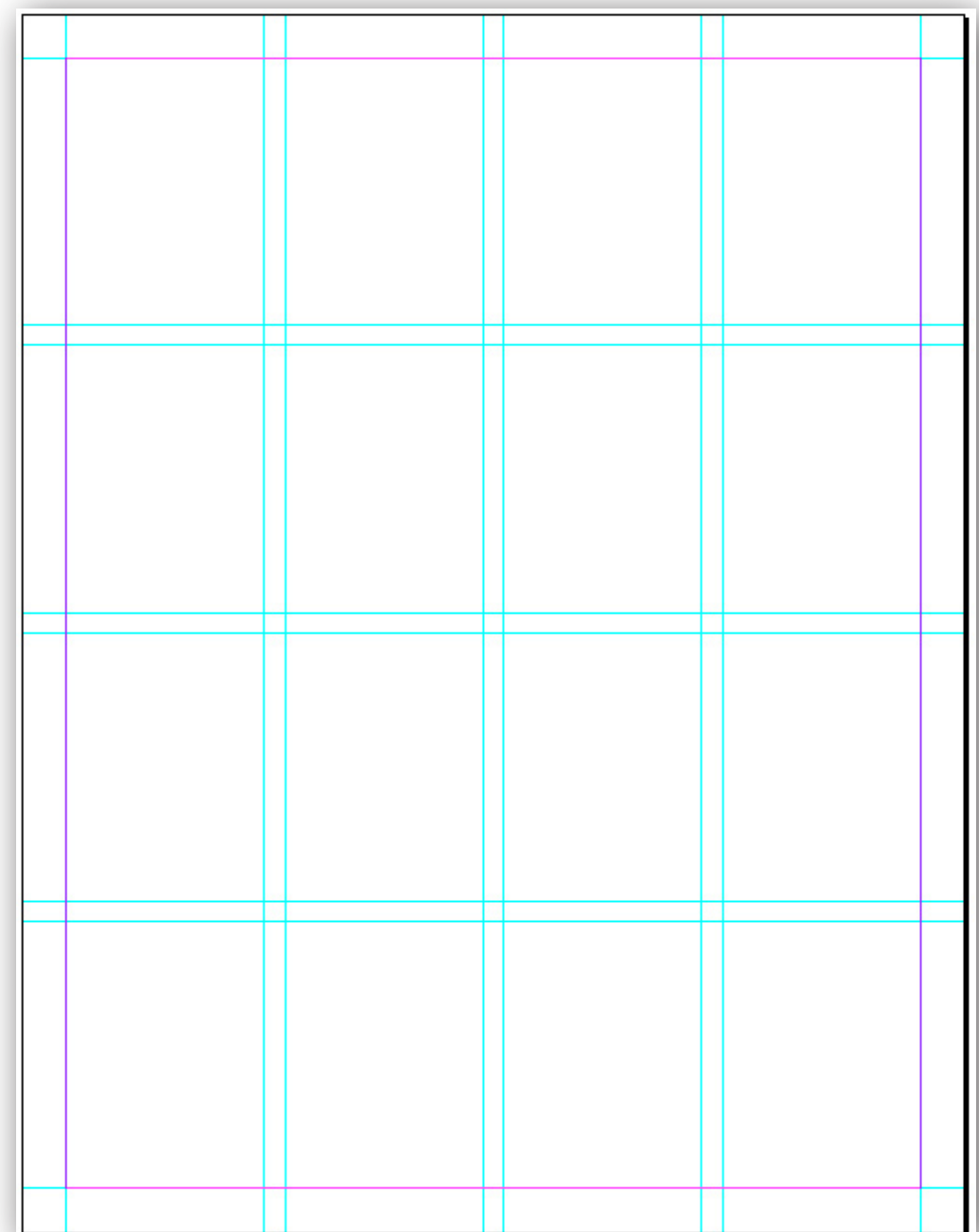
Metadata

Settings

- **How to create a page grid**

By entering number of columns and rows as well as horizontal and vertical gutter space in the Contact Sheet Pro palette a page grid for your contact sheet or picture package is created.

The number of tiles in a page grid design determines how many objects are build onto each page.



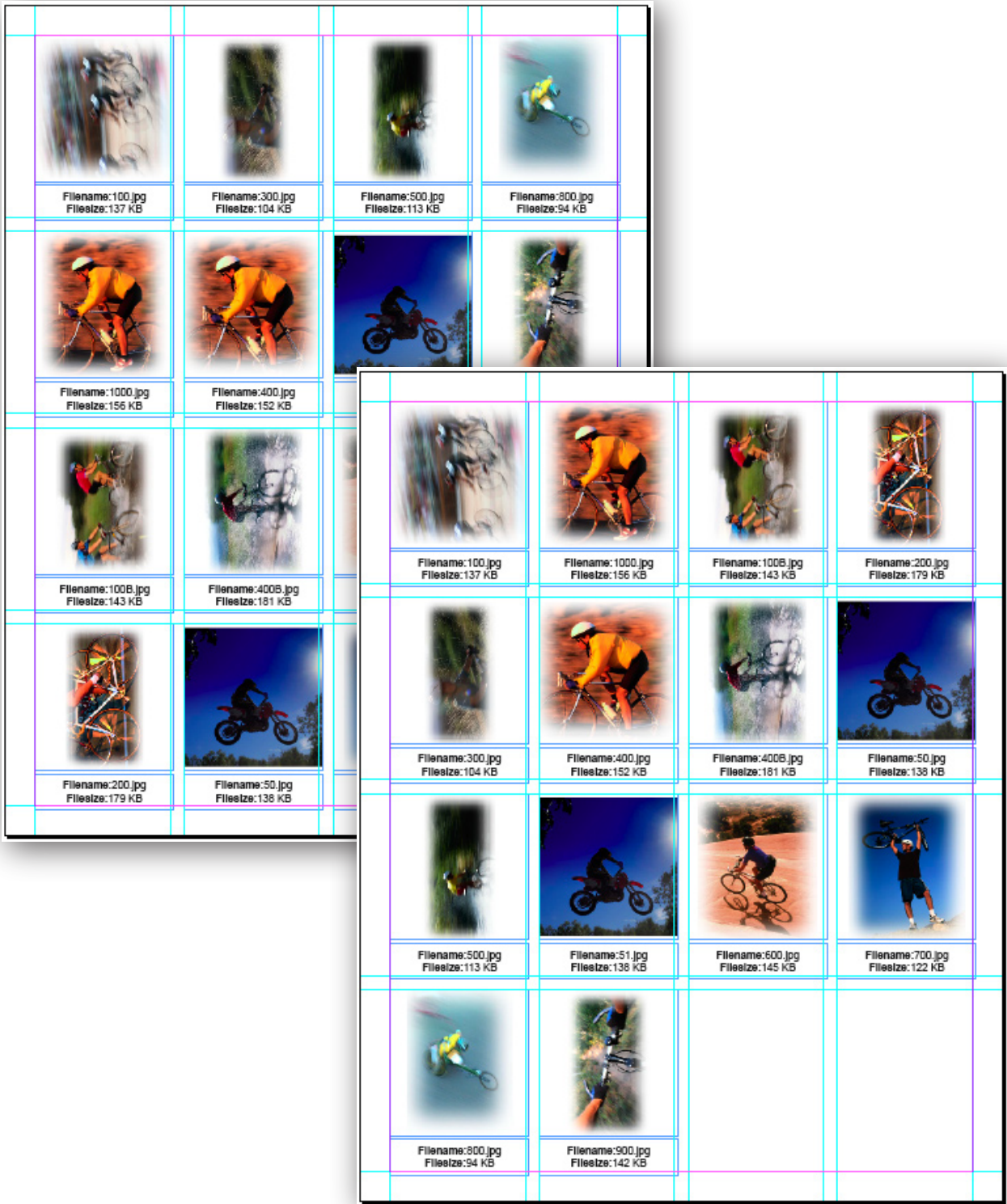
Watch movie



Contact Sheet

- How to create a contact sheet

Set up your page grid, select you module from the popup menu
»Select an Item Design and click the »Create« button.
Then select your destination folder from which you want images
imported into your contact sheet.





Picture package

Modules

Text Modules

Image Modules

Page Grid

Contact Sheet

Picture Package

Locked Image

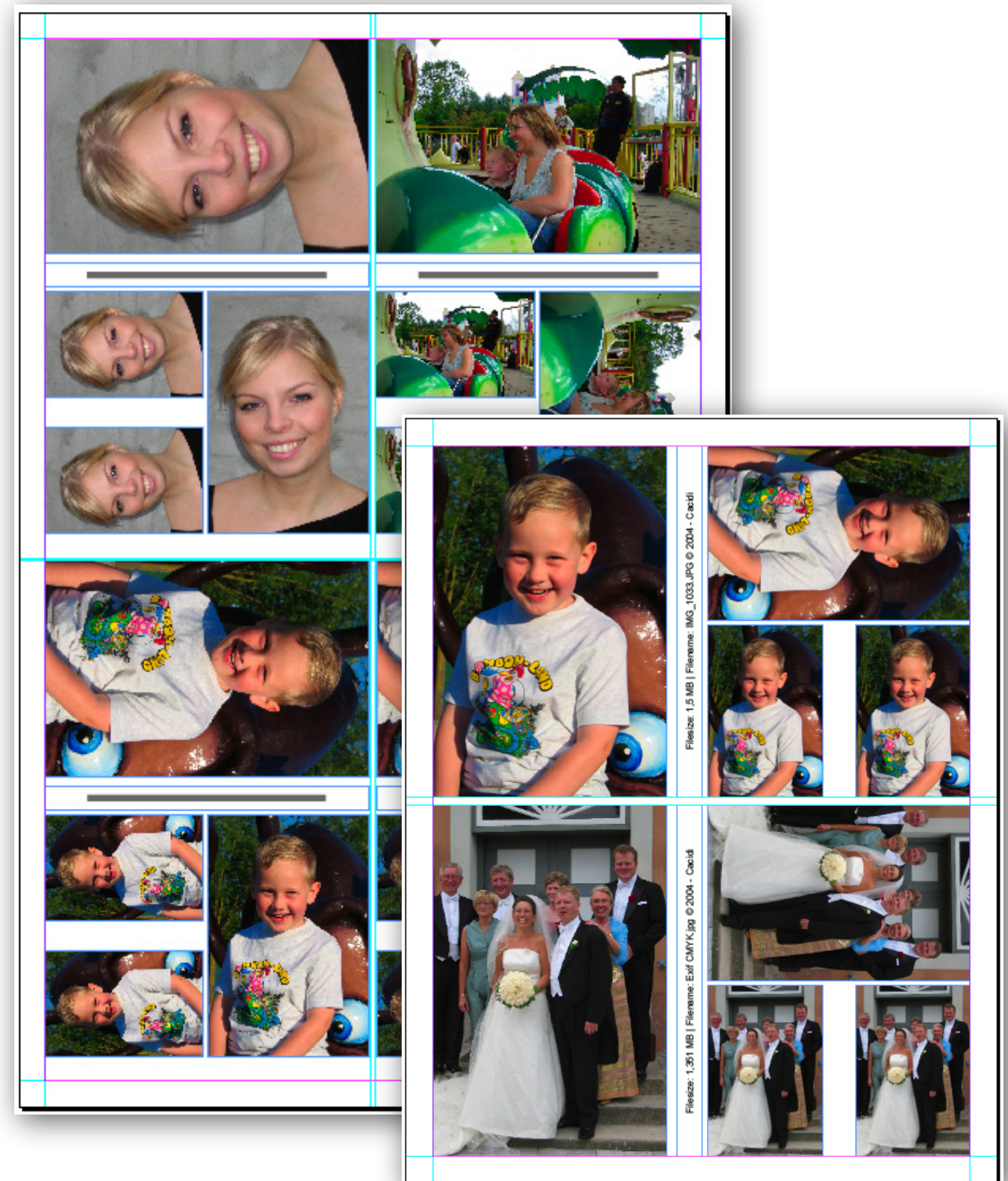
Metadata

Settings

- **How to create a picture package**

Set up your page grid, select your module from the popup menu »Select an Item Design« and click the »Create« button.

Then select your destination folder from which you want images imported into your picture package.



Watch movie



Locked image

Modules

Text Modules

Image Modules

Page Grid

Contact Sheet

Picture Package

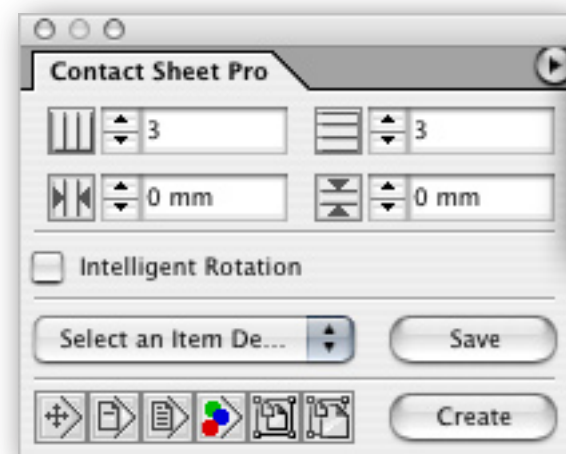
Locked Image

Metadata

Settings

- **Locked Image**

You can have one or more locked images in a picture package. This feature is often useful as for example in school photography, where all students order individual portraits as well as group photographs.



Contact Preferences
Select Locked Image
About this plug-in...



Watch movie



- What is metadata?

Metadata is information included each image. These data may be included by the digital camera capturing the images and consist of information regarding for instance apperture, shooter speed, flash and colorspace.

Metadata can even be saved into images by applications like Adobe PhotoShop.

- XMP data

XMP is a standard defined by organizations and companies like Adobe. All Adobe applications writes XMP data into images, and is even utilised by Adobe Acrobat for extracting document information.

- EXIF data

The EXIF standard is defined by camera vendors

Cacidi Contact Sheet Pro always prioritizes XMP data over EXIF data, which means that XMP data is always detected first, and only in the case where XMP data is not present, Contact Sheet pro searches for EXIF data.

If XMP data is present all EXIF data will by default be included in the XMP format.

FilePathMacintosh HD:Users:richardandersen:Pictures:iPhoto	
Library:2004:07:31:	
FileName	IMG_0208.JPG
FileExtension	JPG
FileSize	733184
FileSizeLogic	732189
FileSizeResource	57332
ExposureTime	1/60
FNumber	45/10
ExifVersion	[48.50.50.48]
DateTimeOriginal	2004:07:31 12:35:06
DateTimeDigitized	2004:07:31 12:35:06
CompressedBitsPerPixel	3/1
ShutterSpeedValue	
ApertureValue	
ExposureBiasValue	
MaxApertureValue	
MeteringMode	
FocalLength	
FlashpixVersion	
ColorSpace	
PixelXDimension	
PixelYDimension	
FocalPlaneXResolution	
FocalPlaneYResolution	
FocalPlaneResolutionUnit	
SensingMethod	
FileSource	
CustomRendered	
ExposureMode	
WhiteBalance	
DigitalZoomRatio	
SceneCaptureType	
Fired	
Return	
Mode	
Function	
RedEyeMode	
CaptionWriter	
Category	
DateCreated	
City	
State	
Country	
Credit	
Source	
Headline	
Instructions	
TransmissionReference	
Urgency	
SupplementalCategories	
Make	
Model	
FilePath	<<FilePath>>
FileName	<<FileName>>
FileExtension	<<FileExtension>>
FileSize	<<FileSize>>
FileSizeLogic	<<FileSizeLogic>>
FileSizeResource	<<FileSizeResource>>
ExposureTime	<<ExposureTime>>
FNumber	<<FNumber>>
ExifVersion	<<ExifVersion>>
DateTimeOriginal	<<DateTimeOriginal>>
DateTimeDigitized	<<DateTimeDigitized>>
CompressedBitsPerPixel	<<CompressedBitsPerPixel>>
ShutterSpeedValue	<<ShutterSpeedValue>>
ApertureValue	<<ApertureValue>>
ExposureBiasValue	<<ExposureBiasValue>>
MaxApertureValue	<<MaxApertureValue>>
MeteringMode	<<MeteringMode>>
FocalLength	<<FocalLength>>
FlashpixVersion	<<FlashpixVersion>>
ColorSpace	<<ColorSpace>>
PixelXDimension	<<PixelXDimension>>
PixelYDimension	<<PixelYDimension>>
FocalPlaneXResolution	<<FocalPlaneXResolution>>
FocalPlaneYResolution	<<FocalPlaneYResolution>>
FocalPlaneResolutionUnit	<<FocalPlaneResolutionUnit>>
SensingMethod	<<SensingMethod>>
FileSource	<<FileSource>>
CustomRendered	<<CustomRendered>>
ExposureMode	<<ExposureMode>>
WhiteBalance	<<WhiteBalance>>
DigitalZoomRatio	<<DigitalZoomRatio>>
SceneCaptureType	<<SceneCaptureType>>
Fired	<<Fired>>
Return	<<Return>>
Mode	<<Mode>>
Function	<<Function>>
RedEyeMode	<<RedEyeMode>>
CaptionWriter	<<CaptionWriter>>
Category	<<Category>>
DateCreated	<<DateCreated>>
City	<<City>>



Settings

Modules

Text Modules

Image Modules

Page Grid

Contact Sheet

Picture Package

Locked Image

Metadata

Settings

- **Contact Sheet Pro settings**

In the Contact Sheet Pro »Preferences« dialog box, opened via the Contact Sheet Pro palettes flyout menu, change your setting for Item folder, preview image and build orientation.

- **Select an item folder**

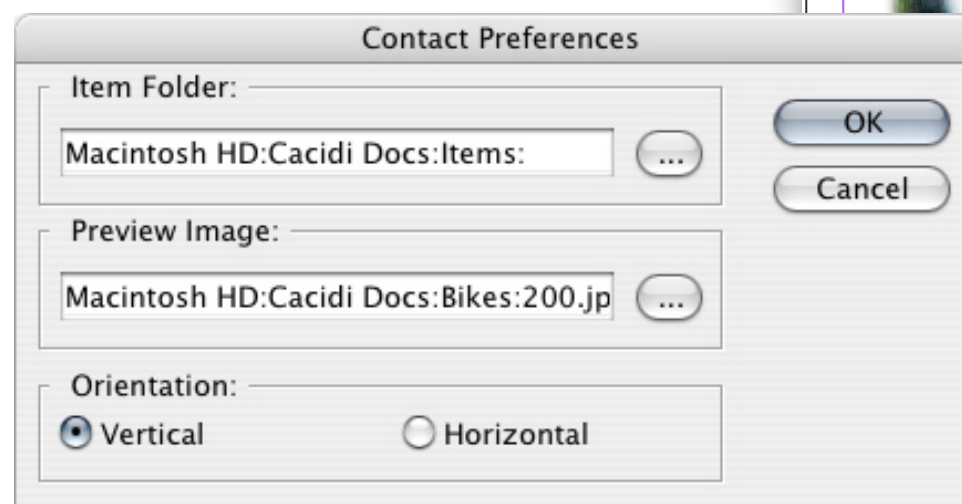
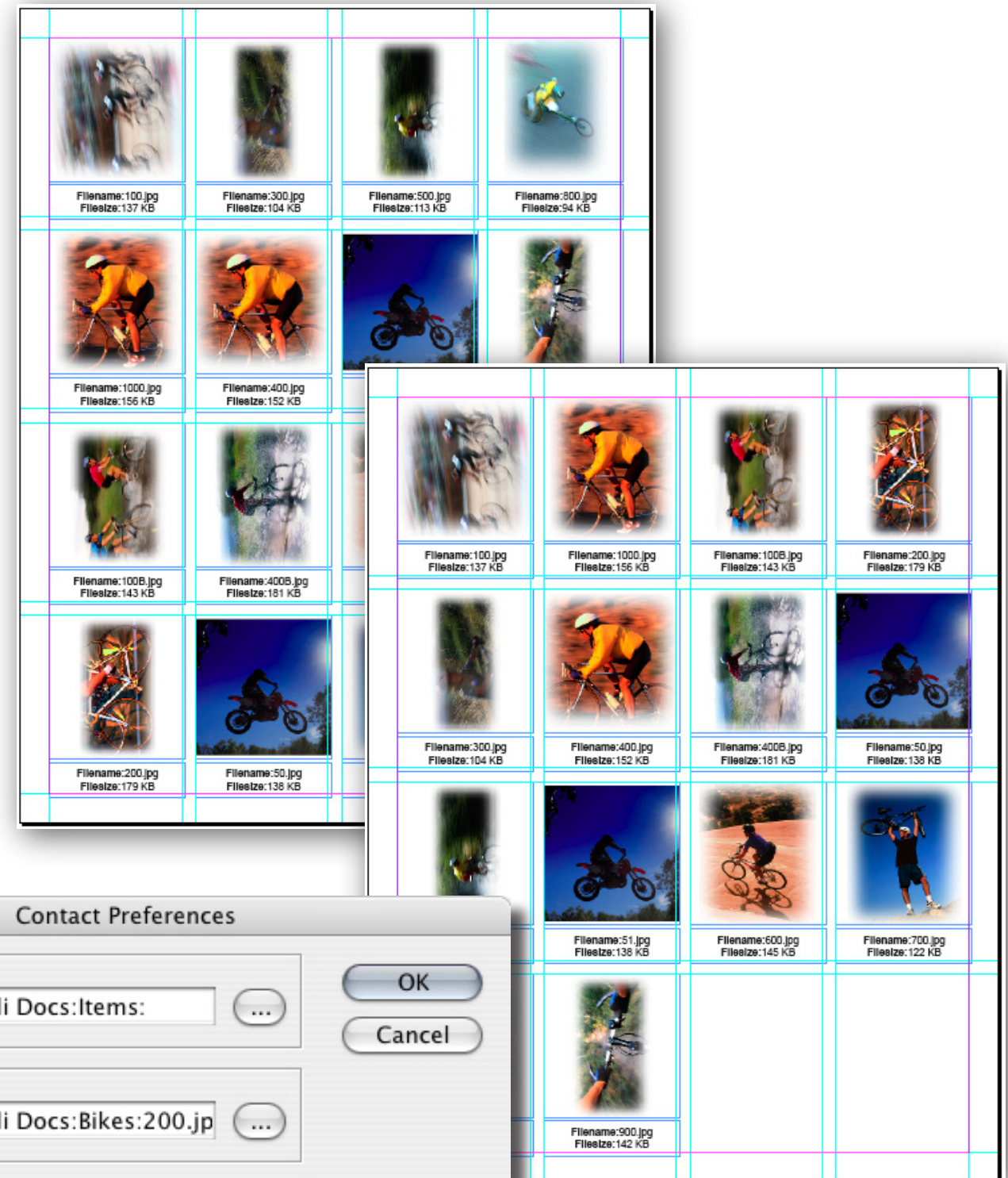
Select your workspace folder for storing and accessing contact sheet and picture package module designs.

- **Select preview image**

When selecting an item module for your contact sheet or picture package, a »dummy« image is used for preview. Select your own preview image with this dialogue box.

- **Horizontal/vertical build**

Select whether you want Contact Sheet Pro to build contact sheets or picture packages horizontally or vertically.





Modules

Modules

Text Modules

Image Modules

Page Grid

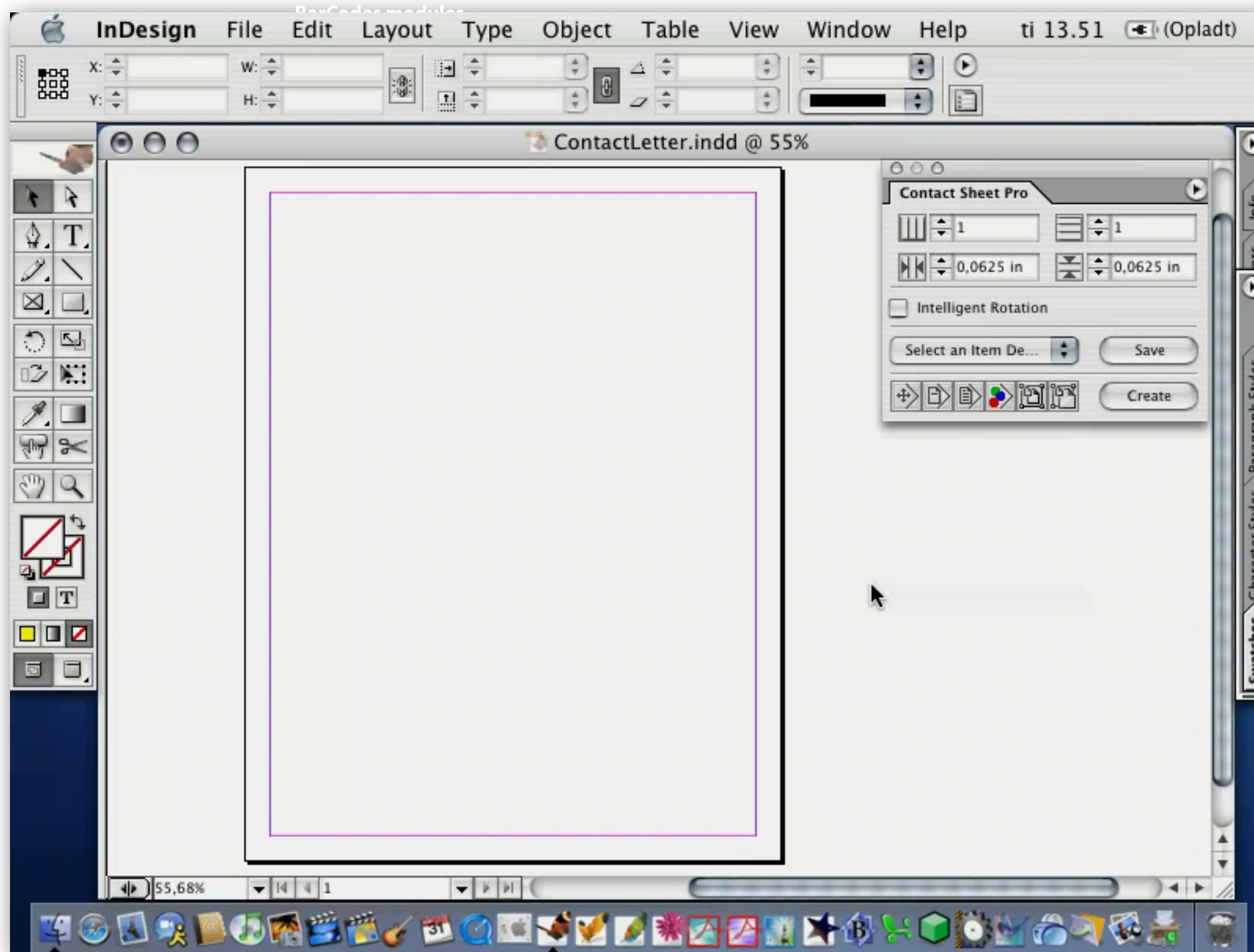
Contact Sheet

Picture Package

Locked Image

Metadata

Settings





Text modules

Modules

Text Modules

Image Modules

Page Grid

Contact Sheet

Picture Package

Locked Image

Metadata

Settings

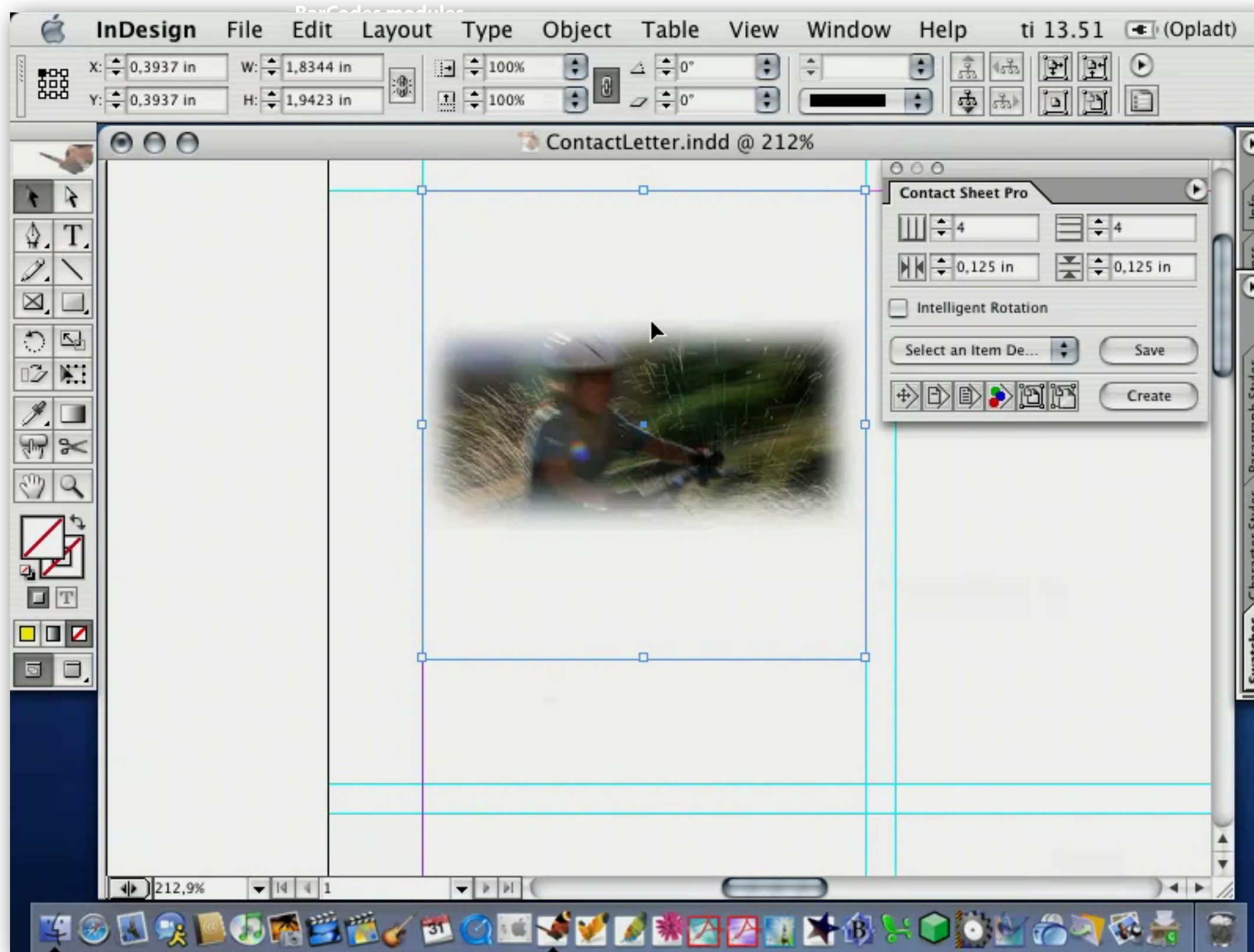




Image modules

Modules

Text Modules

Image Modules

Page Grid

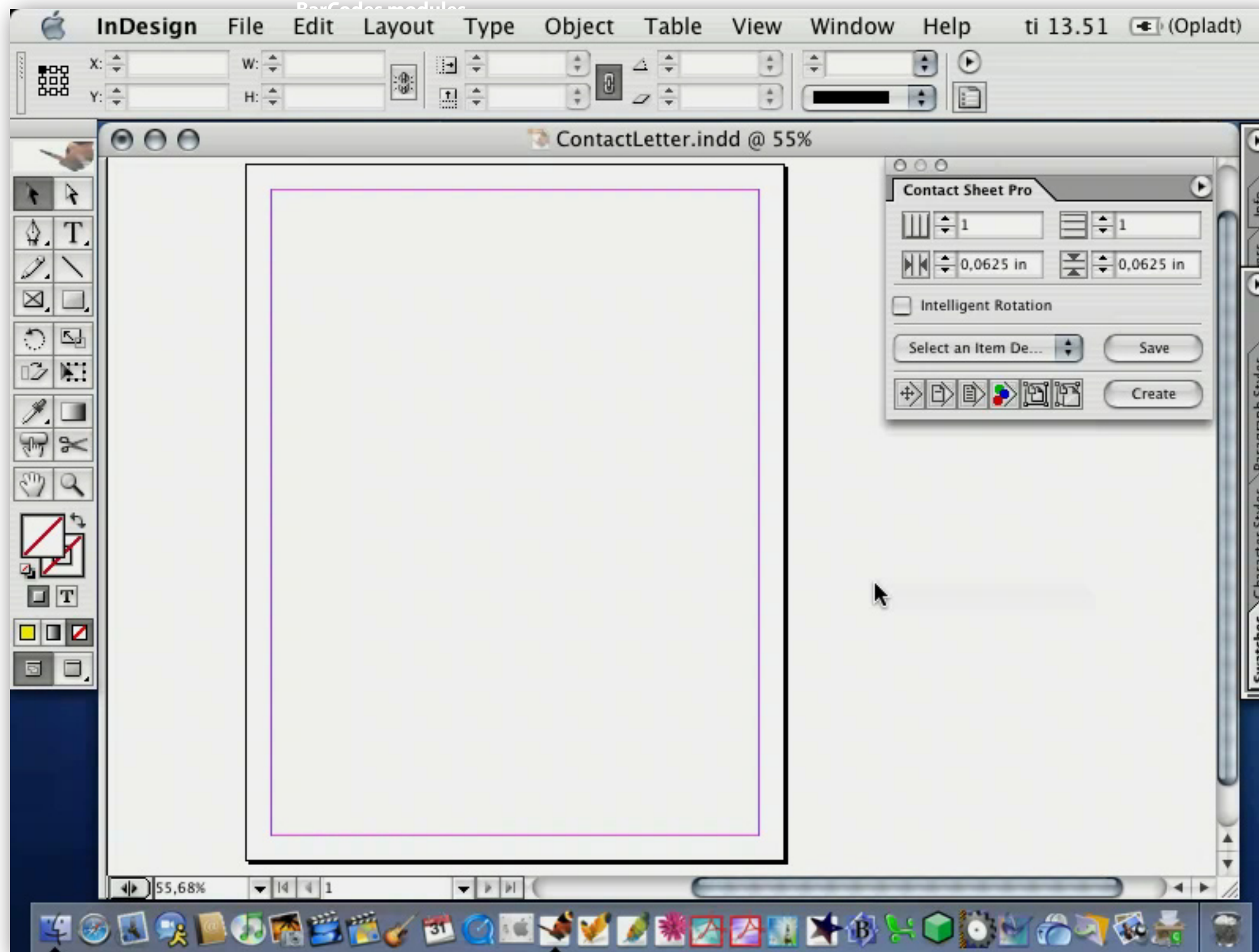
Contact Sheet

Picture Package

Locked Image

Metadata

Settings





Page grid

Modules

Text Modules

Image Modules

Page Grid

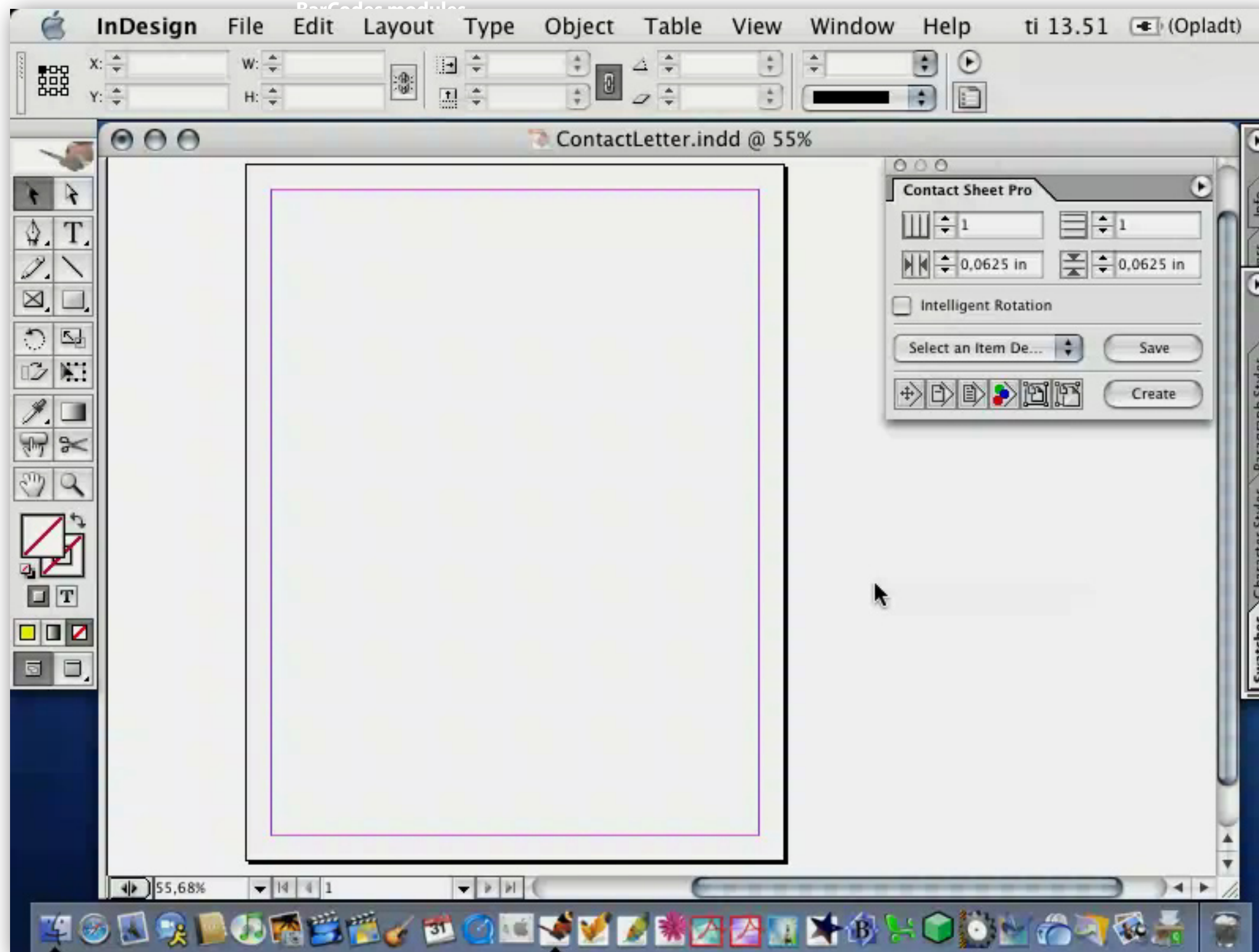
Contact Sheet

Picture Package

Locked Image

Metadata

Settings





Contact sheet

Modules

Text Modules

Image Modules

Page Grid

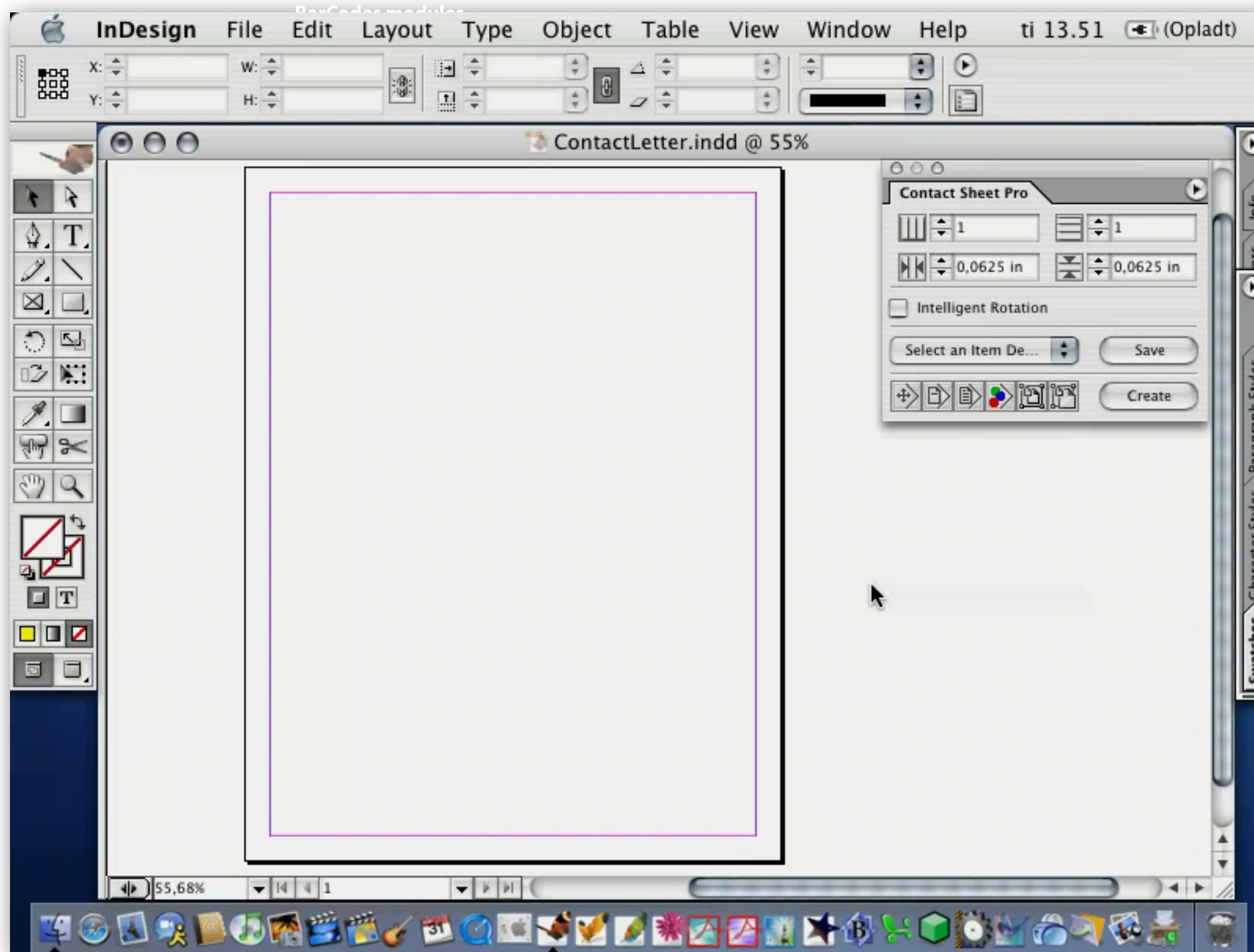
Contact Sheet

Picture Package

Locked Image

Metadata

Settings





Picture package

Modules

Text Modules

Image Modules

Page Grid

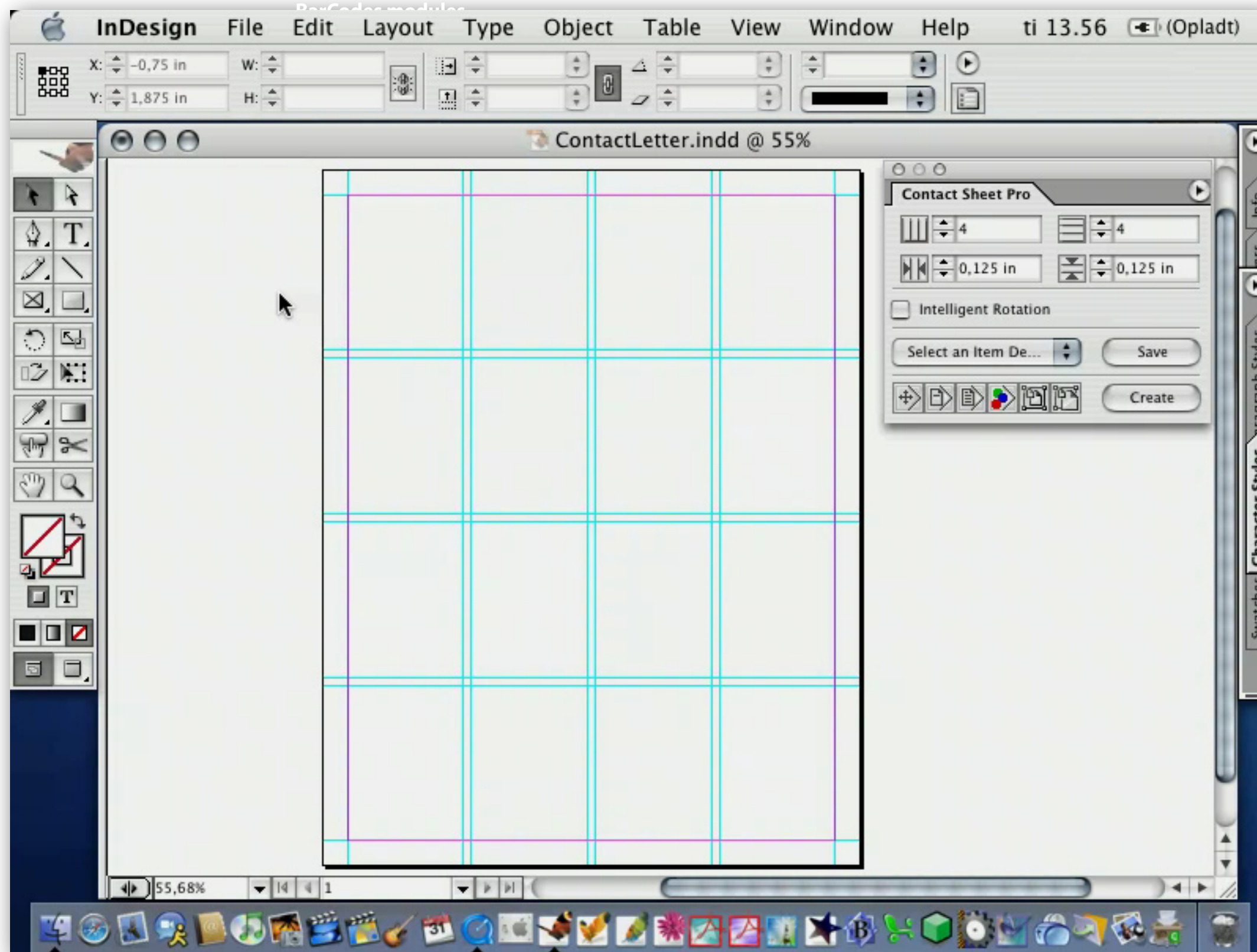
Contact Sheet

Picture Package

Locked Image

Metadata

Settings





Locked image

Modules

Text Modules

Image Modules

Page Grid

Contact Sheet

Picture Package

Locked Image

Metadata

Settings

