

# User Manual



## Copyright

Solusseum Inc. reserves the copyright of all programs, files, manuals and any other documents included in Maestro Recovery. Unauthorized copying or modification of documents regarding the product either in full or part is prohibited by law, unless otherwise approved in advance by Solusseum Inc.

## Precautions

Make sure to read this manual before using the program. The updated information regarding the product is provided on the website of our company, [www.solusseum.com](http://www.solusseum.com).

It is strongly recommended that you back up important data within your PC before using Maestro Recovery. We shall not be held accountable for any loss or damage incurred on private data due to an inadvertent mistake. Please, be informed that some part of the program may not be in consistency with this manual due to an update of the program on a continuous basis.



# ConTents

## Chapter 1 Introduction to the Program

[Recommended System Specification]

## Chapter 2 How to Install and Delete the Program

### 1. Prior to Installation

- 1) Deletion of Recovery Program
- 2) Clean Disk
- 3) Scan Disk
- 4) Disk Defragmentation
- 5) Virus Check
- 6) User Data Backup

### 2. How to Install the Program

- 1) Execution of the Install Program
- 2) Entering a Product Authentication Key
- 3) Determination of the Size of Data Partition
- 4) Restart Windows
- 5) Hard Disk Partition and Basic Configuration of Program
- 6) Check Hard Disk
- 7) Automatic Conversion to Protection Mode

### 3. How to Delete the Program

- 1) Execution of Deletion Program
- 2) Selection of Deletion Option
- 3) Restart Windows
- 4) Deletion of Basic Environment of Program
- 5) Check Hard Disk
- 6) Elimination of Windows Driver

### 1. How to Use the Manager

- 1) Execution and Composition of Manager
- 2) System Recovery
- 3) Save Current Status

- 4) Begin Protection
- 5) Halt Protection
- 6) Configuration
- 7) Change Password
- 8) Use Status
- 9) Information

## **2. Using Emergency Menu**

- 1) Emergency Recovery
- 2) Emergency Removal

## **3. Windows Configuration Modification Program**

- 1) Automatic Setting
- 2) Manual Setting

## **[Error Code and Responsive Measures]**

# >> Chapter 1 Introduction to the Program

[Recommended System Specification]



The computer has secured its position as one of the essential tools of the information society we live in. As the computer is becoming more and more widely used in our lives, the system outages caused by user mistakes and spread of viruses have dramatically increased. It should not only disturb your work but also take a lot of money and time to recover the system.

Maestro Recovery provides you with the solution to protect your valuable system from various outages and to recover it back to the normal state in within the shortest possible time.

## [Recommended System Specification]

Category	Recommended Specification
CPU	Intel PentiumIV 2.0GHz or higher
Memory	256 MB or higher
Free Hard Disk Space	Free Space 10.0GB or higher
File System	NTFS
Operating System	Windows 2000 PRO / XP / Vista

### 1) Maestro Recovery does not support following systems described below.

▷ Multi-Booting System

: System that contains two or more operating systems in it

▷ System whose disks including [C: Drive] are set to be [Dynamic Disk]

▷ System whose Windows operating system is installed in a partition other than [C: Drive]

▷ System where booting is conducted in a partition other than [C: Drive]

▷ System where [C: Drive] is installed in the logical partition

▷ System whose BIOS contains the main board that does not support INT13h Extension

▷ System where a recovery program from another vendor is installed

: The installed recovery program must be deleted before installing Maestro Recovery

▷ [Maximum Power Saving Mode]

: Maximum Power Saving Mode popularly used in a laptop computer inhibit Maestro Recovery from protecting the system are (C: Drive)].

Please, do not use the function of [Maximum Power Saving Mode].

Once you install Maestro Recovery, it automatically changes the Windows information not to use [Maximum Power Saving Mode].

▷ If you try to install Maestro Recovery in another computer using the Image Backup Program, you will have the error message of [Maestro Corrupt!].

Make sure to delete Maestro Recovery before you create a hard disk image using the Image Backup Program.

▷ Please, do not use the [Write Debugging Information] function when a system error occurs.

If you install Maestro Recovery it automatically sets Windows information not to use [Write Debugging Information]

**2) Maestro Recovery is the program that recovers the system with a problem that occurs on the system area (C: Drive) back into a normal system within the shortest possible time. The following conditions, however, cannot be recovered using Maestro Recovery.**

- ▷ If there is a physical damage on a hard disk
- ▷ If you modify the system area(C: Drive) by booting the system with another media (floppy Disk, CD, ODD Drive, flash, External Drive, Network booting, USB and etc) other than the hard disk in which Windows is installed.
- ▷ If [C: Drive] is formatted by the [Low Format] Program provided by hard disk manufacturers
- ▷ If the system area(C: Drive) is modified with the hard disk, in which Maestro Recovery is installed is attached to another computer

## >> Chapter 2 How to Install and Delete the Program

### 1. Prior to Installation

- 1) Deletion of Recovery Program
- 2) Clean Disk
- 3) Scan Disk
- 4) Disk Defragmentation
- 5) Virus Check
- 6) User Data Backup

### 2. How to Install the Program

- 1) Execution of the Install Program
- 2) Entering a Product Authentication Key
- 3) Determination of the Size of Data Partition
- 4) Restart Windows
- 5) Hard Disk Partition and Basic Configuration of Program
- 6) Check Hard Disk
- 7) Automatic Conversion to Protection Mode

### 3. How to Delete the Program

- 1) Execution of Deletion Program
- 2) Selection of Deletion Option
- 3) Restart Windows
- 4) Deletion of Basic Environment of Program
- 5) Elimination of Windows Driver



## **1. Prior to Installation**

It is recommended that you optimize the system by executing following tasks before you install the program.

Particularly, if an error message pops up during booting or the system is down while in use, solve these problems before installing the program.

If you are not able to solve these problems, reinstall the Windows prior to installation of the program.

### **1) Deletion of Recovery Program**

The recovery program may create a serious problem on the system caused by collision or interference among different recovery programs installed in a single system, it is required to delete the existing recovery program prior to installation of Maestro Recovery program.

Our company shall not be held accountable for any problems that might occur during or after the installation of Maestro Recovery program without deleting the existing recovery program

### **2) Clean Disk**

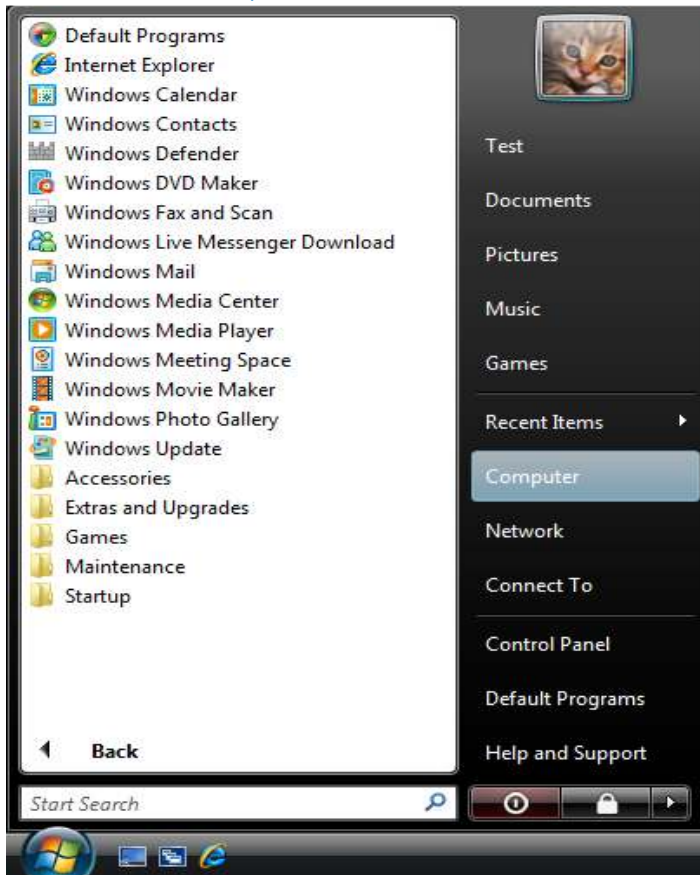
Delete programs and/or files that are not necessary in the system area(C: Drive).

Clean [C: Drive] using the [Clean Disk] utility provided by Windows after deleting files in the system area(C: Drive) that have not been used for a long time or that are not necessary anymore.

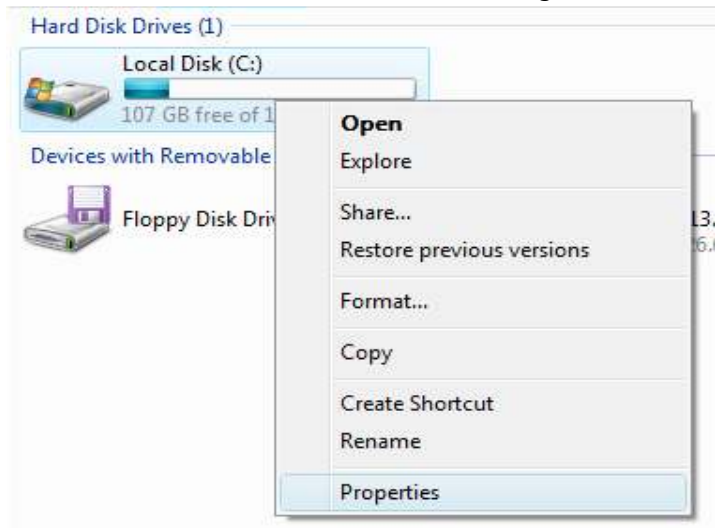
If you install the recovery program without using Clean Disk, it may cause speed/performance degradation of Windows or have Maestro take up a large disk space to protect the system area.

## ■ How to Execute [Clean Disk] Utility

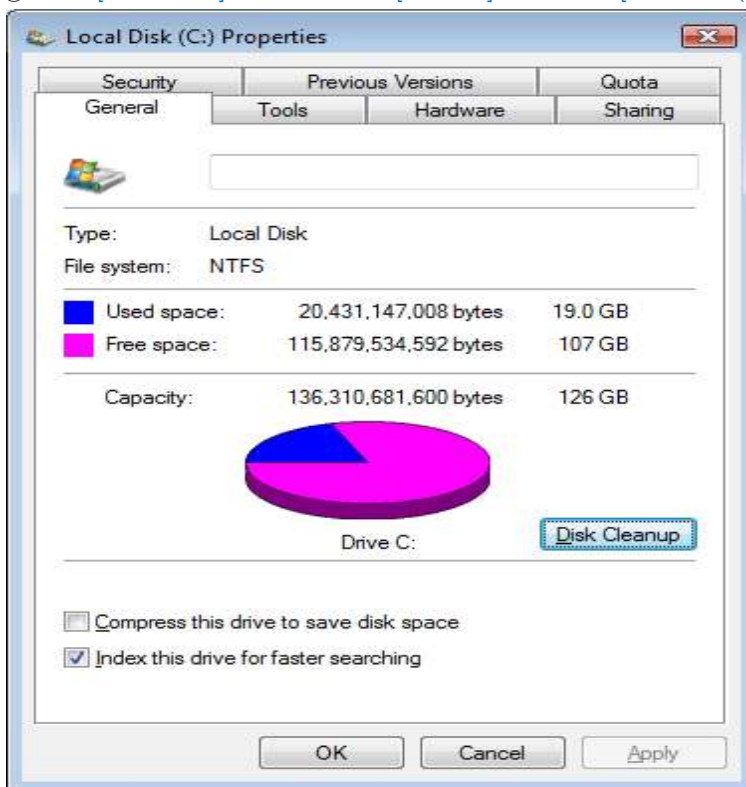
① Click [Start -> Computer].



② Place the mouse on the [Local Disk(C:)] and right-click the mouse and select [Property].



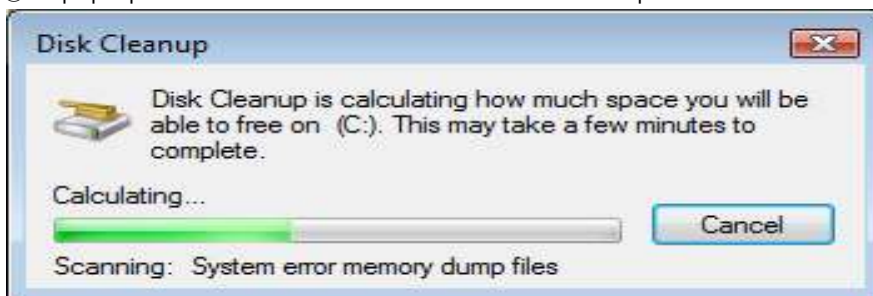
- ③ Click [\[Clean Disk\]](#) button on the [\[General\]](#) tab of the [\[Local Disk\(C:\) Properties\]](#) window.



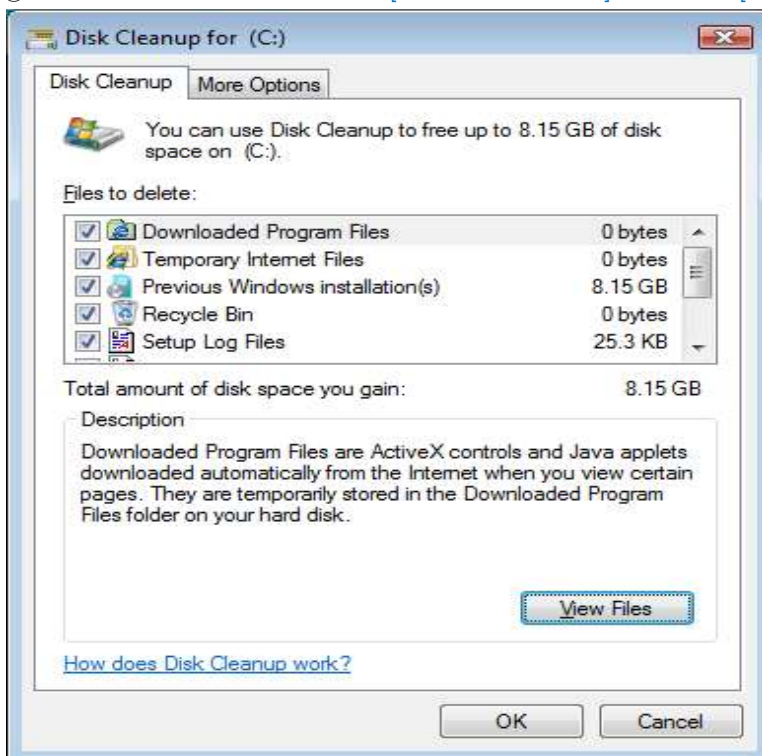
#### <Note>

Click [\[All User Files in the Computer\]](#) button on the [\[Clean Disk Option\]](#) window.

- ④ A pop-up window that calculates the amount of disk space to be cleaned will appear.



- ⑤ Select files to be deleted in the [\[Files to be Deleted\]](#) list on the [\[Clean Disk\]](#) tab of the [\[Clean Disk\(C:\)\]](#) window.



- ⑥ [\[Clean Disk\]](#) utility will erase selected files out of [\[C: Drive\]](#).



### 3) Scan Disk

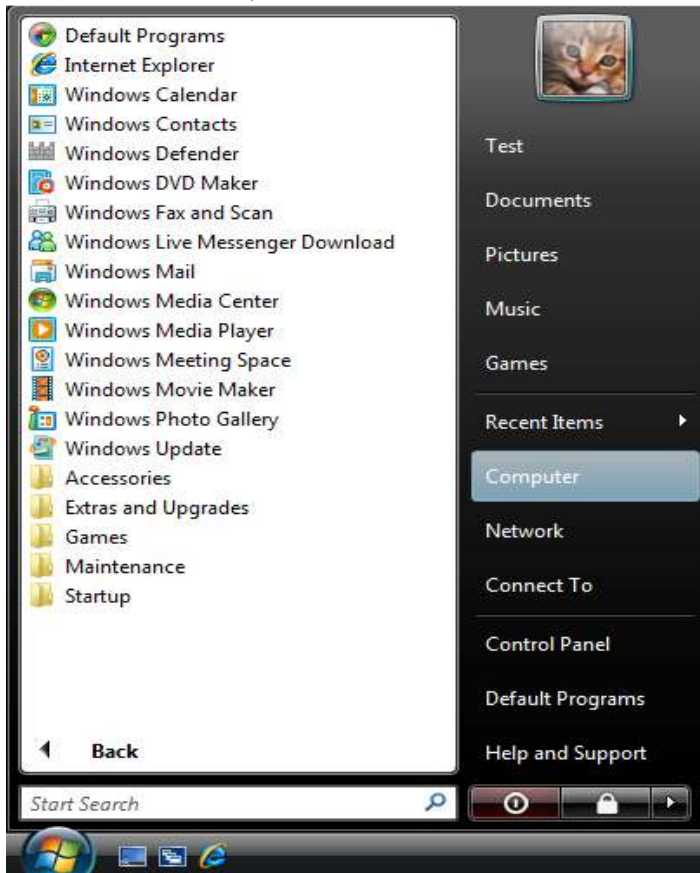
This utility scans a disk to check if there is any problem in File System in the system area(C: Drive) and rectifies detected errors.

It is recommended that you reinstall Windows prior to installation of the Maestro Recovery program unless the [\[Scan Disk\]](#) utility fails to rectify File System errors.

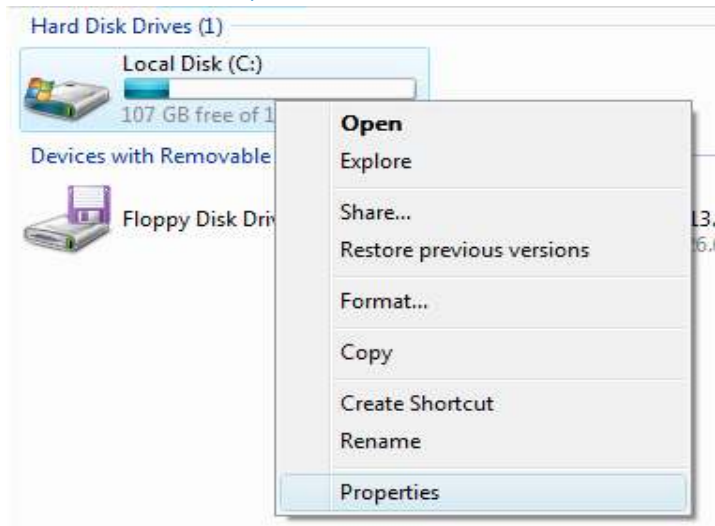
If you install the Maestro Recovery program without correcting File System errors, an error may occur during installation or the program may not be installed in a normal manner. Even if it may, unexpected problems may occur later on while in use.

## ■ How to Use [Scan Disk] Utility

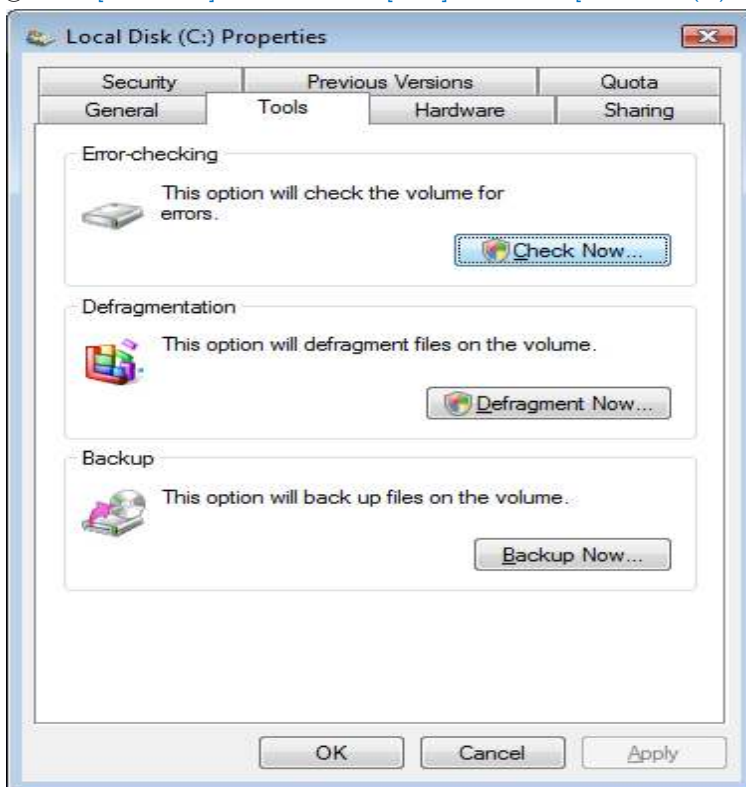
① Click [Start -> Computer].



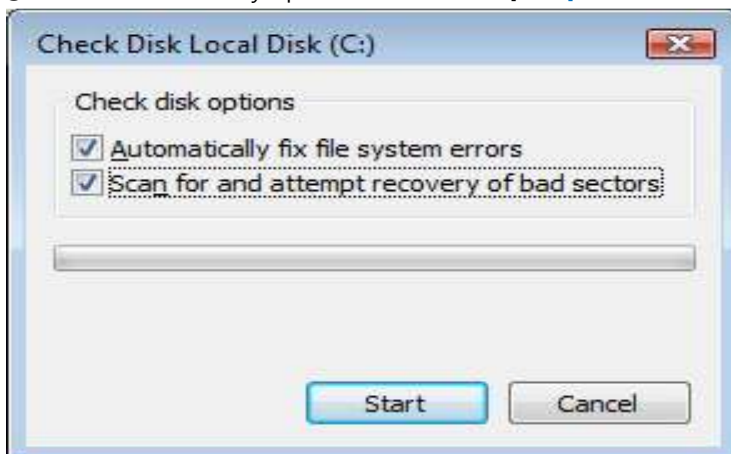
② Click [Start -> Computer] Place the mouse on the [Local Disk(C:)] and right-click the mouse and select [Property].



- ③ Click [Scan Disk] button on the [Tool] tab of the [Local Disk(C:) Property] window.



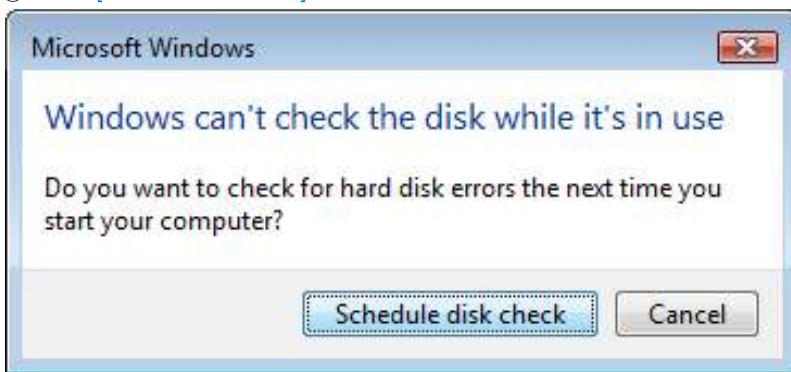
- ④ Check both recovery options and click the [Start] button.



<Note>

If you check [Scan and Recover Bad Sector] option, it may take some time depending on the size of [C: Drive].

- ⑤ Click [\[Reserve Scan Disk\]](#) button



- ⑥ You are not able to correct errors with [\[Scan Disk\]](#) utility while Windows is being executed. If that is the case, restart Windows.

- ⑦ Upon restarting Windows, [\[Scan Disk\]](#) will be executed.

```
Checking file system on C:
The type of the file system is NTFS.

A disk check has been scheduled.
Windows will now check the disk.

CHKDSK is verifying files (stage 1 of 5)...
100096 file records processed.
File verification completed.
45 large file records processed.
0 bad file records processed.
4 EA records processed.
95 reparse records processed.
CHKDSK is verifying indexes (stage 2 of 5)...
136156 index entries processed.
Index verification completed.
0 unindexed files processed.
CHKDSK is verifying security descriptors (stage 3 of 5)...
100096 security descriptors processed.
Security descriptor verification completed.
18031 data files processed.
CHKDSK is verifying Usn Journal...
```

- ⑧ Repeat the process above until no error is found during the execution of Scan Disk

If an error persists following a number of attempts of Scan Disk, we recommend that you reinstall Windows because the persistent error indicates that there is a problem in File System.

## 4) Disk Defragmentation

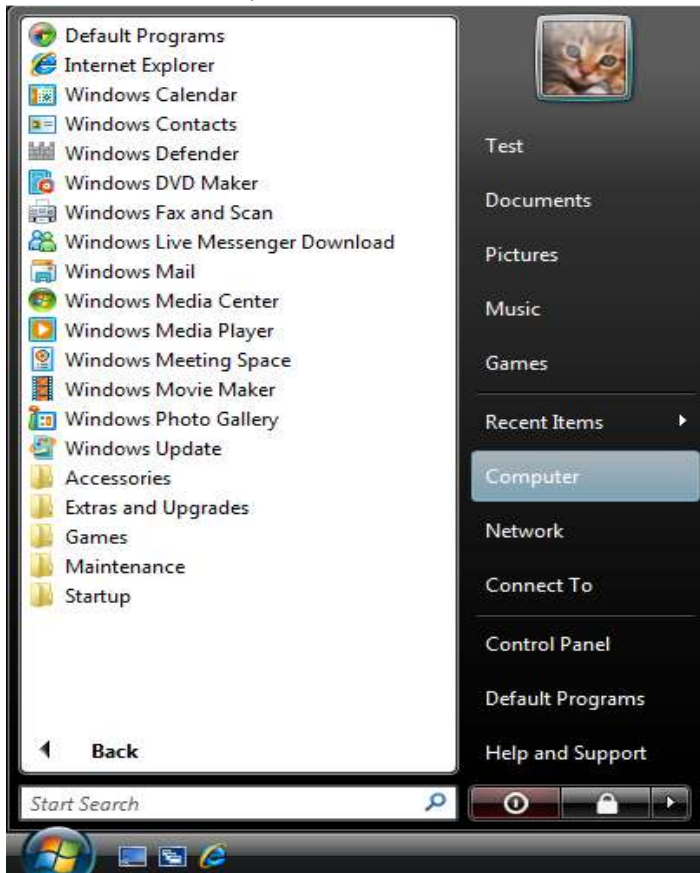
Optimize the system area(C: Drive) using [\[Disk Defragmentation\]](#) utility.

If you install the Maestro Recovery program without running Disk Defragmentation, it may cause speed/performance degradation of Windows or have Maestro take up a large disk space to protect the system area..

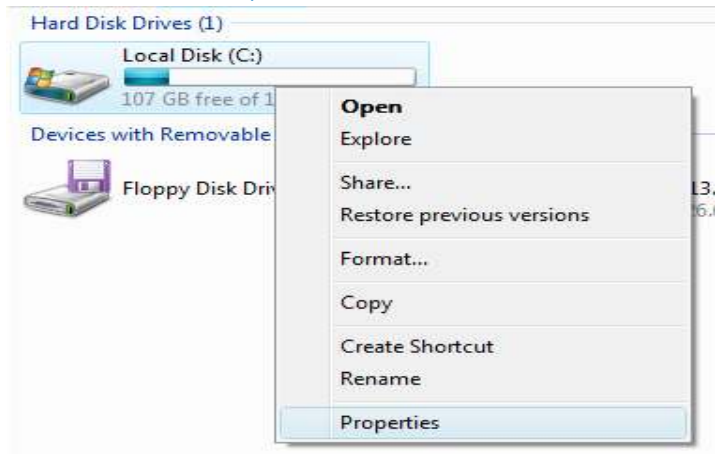


## ■ How to Use [Disk Defragmentation] Utility

① Click [Start -> Computer].

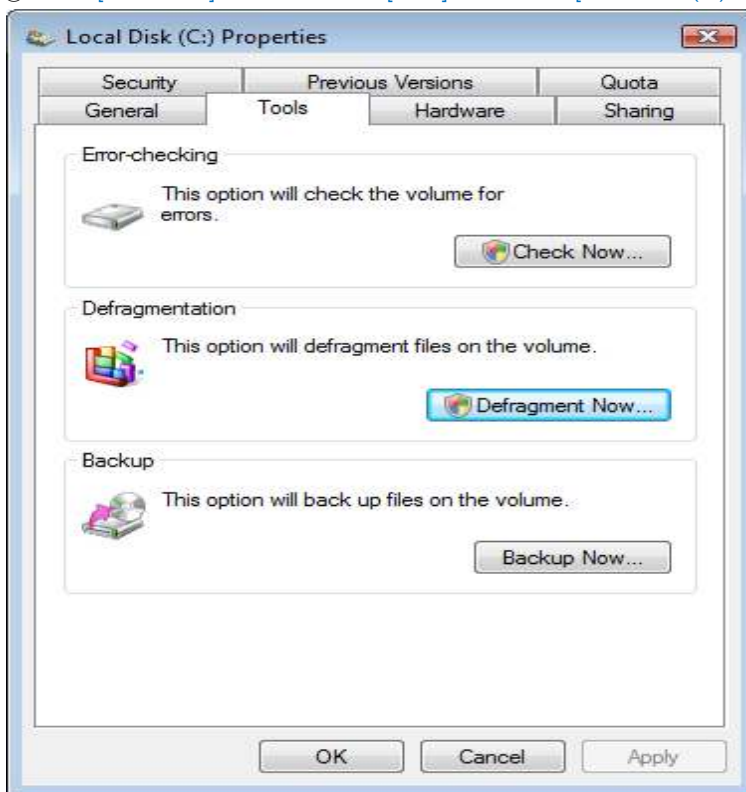


② Click [Start -> Computer] Place the mouse on the [Local Disk(C:)] and right-click the mouse and select [Property].

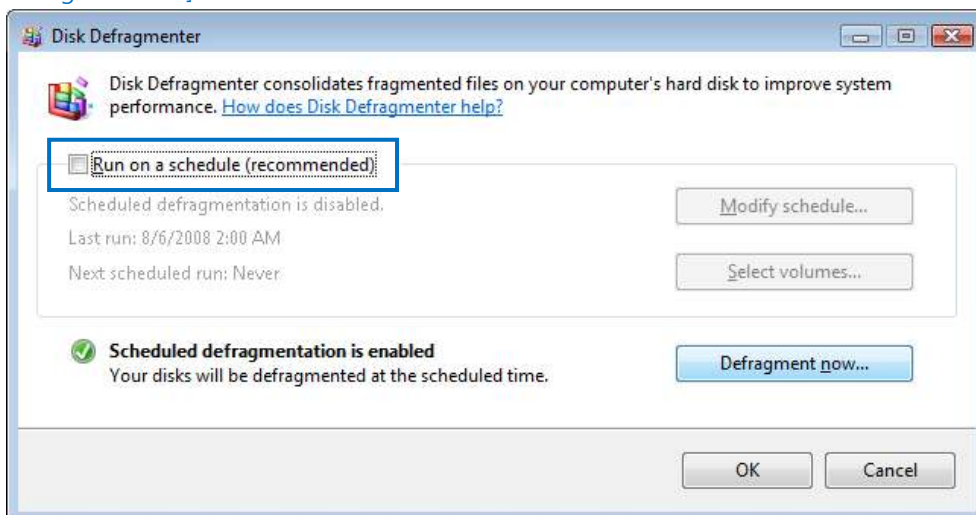




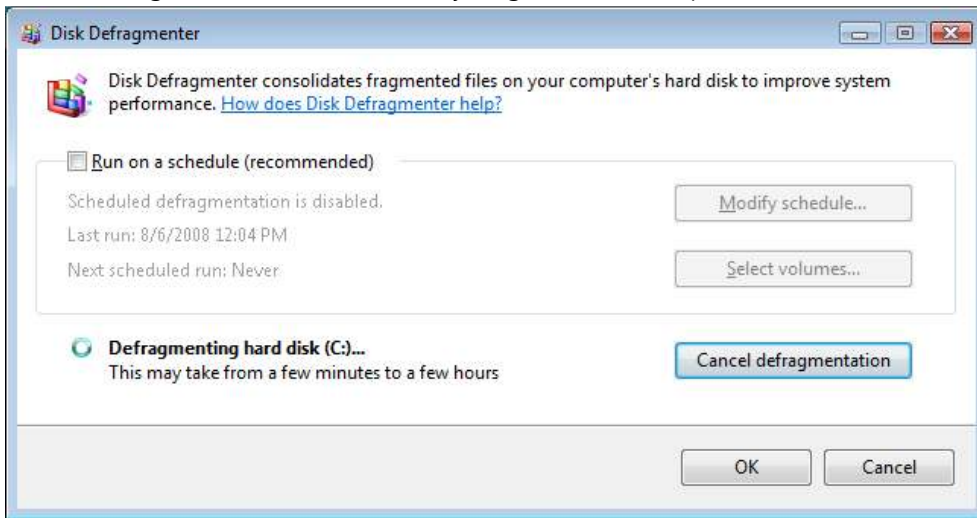
- ③ Click [Scan Disk] button on the [Tool] tab of the [Local Disk(C:) Property] window.



- ④ Uncheck the option of [Reserved Execution] and click the [Defragment Now] button on the [Disk Defragmentation] window.



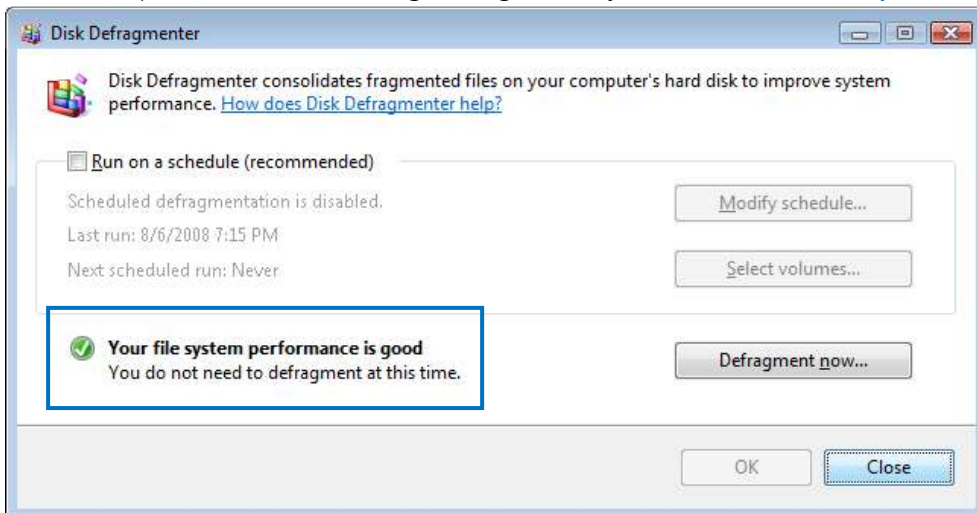
⑤ Disk Defragmentation takes a relatively long time until completion.



#### <Note>

If [Reserved Execution] option is checked, Disk Defragmentation is executed on a periodic basis, which not only degrades the speed of Windows but also cause Maestro to take up a large disk space. Therefore, it is recommended to uncheck [Reserved Execution] option.

⑥ A single attempt of Disk Defragmentation is not enough to optimize the [C: Drive]. The process described above should be repeated until the following message that says [Performance of File System is good enough.] appears.



## 5) Virus Check

Eliminate viruses and malicious codes by running a vaccine or anti-malicious program.

If you install the Maestro Recovery program on a system with virus and/or malicious code, the virus and/or malicious code that have existed prior to installation of Maestro Recovery program won't be eliminated even of the system area(C: Drive) is recovered.

## 6) User Data Backup

It is required to back up critical user data in other types of storage media device prior to installation of Maestro Recovery program in order to preemptively prevent the loss or damage of data due to unexpected problems that might occur during installation of Maestro Recovery.

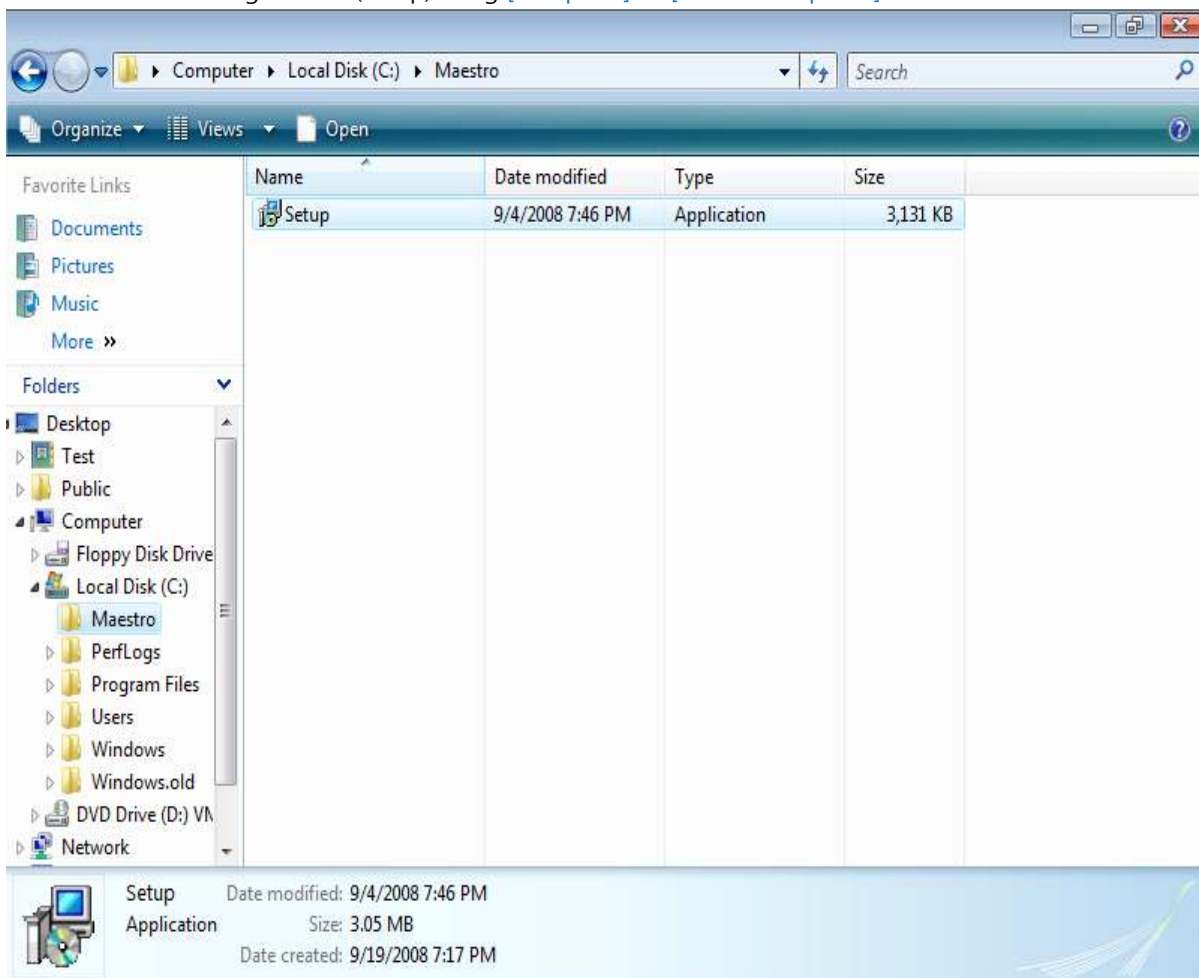
In addition, if you install the Maestro Recovery program, the data stored in the system area(C: Drive) can be erased with the execution of [System Recovery] command. Thus, it is recommended to move the private user data from [C: Drive] to other Drive.

If there is only one drive in your PC, you can divide a partition for user data using a separate utility before installing the Maestro Recovery program.

## 2. How to Install the Program

### 1) Execution of the Install Program

Execute the Install Program File (Setup) using [\[Computer\]](#) or [\[Windows Explorer\]](#)



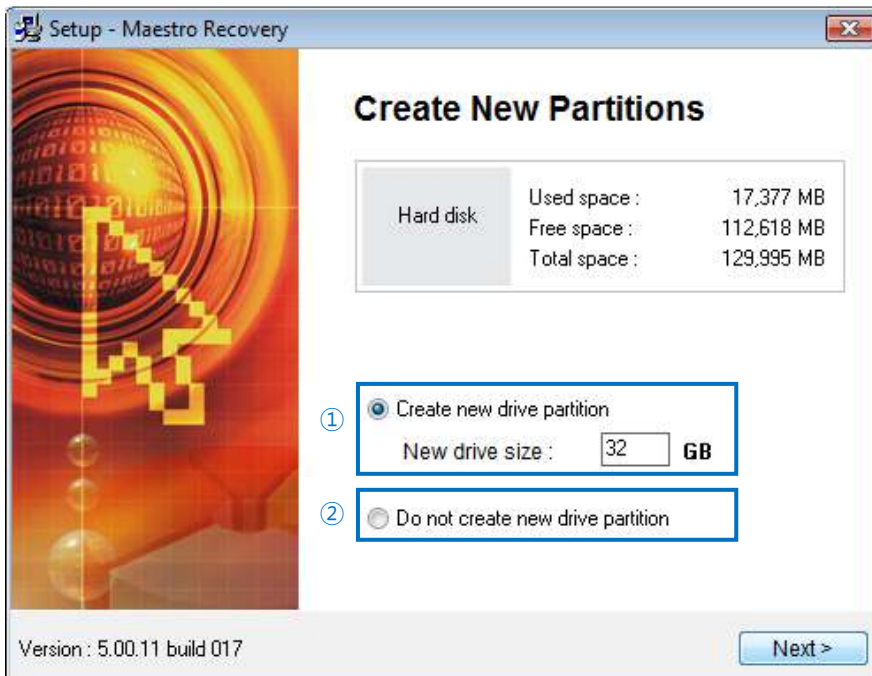
## 2) Entering a Product Authentication Key



Enter the product authentication key and click the [\[Next\]](#) button.

The connection to the Internet should be available at this time for online authentication of the product

## 3) Determination of the Size of Data Partition



If you execute [\[System Recovery\]](#) after installing Maestro Recovery, all data stored in the [\[C: Drive\]](#), which is used after installation will be erased.

In order to prevent user data from being erased with the execution of System Recovery command, it must be saved in a partition other than [\[C: Drive\]](#).

#### [\[Partition Hard Disk\]](#)

This is the stage to determine the size of a partition to save user data in for a PC with no additional disk partition to save user data in other than [\[C: Drive\]](#).

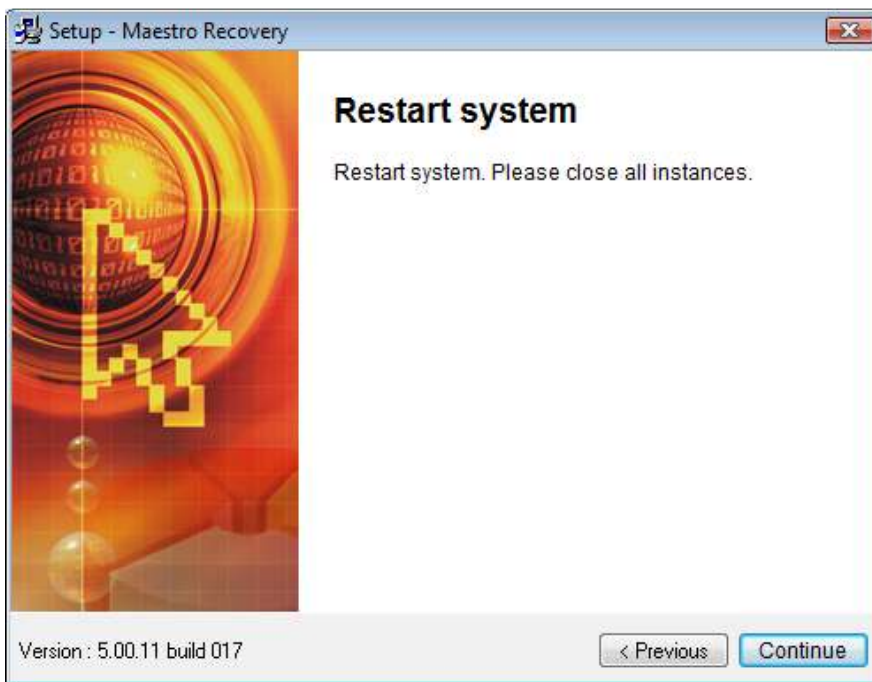
① In case of creating a partition to save user data in

: Select [\[Creation of Drive to be Used for Data Area\]](#) and enter the size of a disk to save user data in, followed by [\[Next\]](#) button. (Recommended)

② In case of Not creating a partition to save user data in

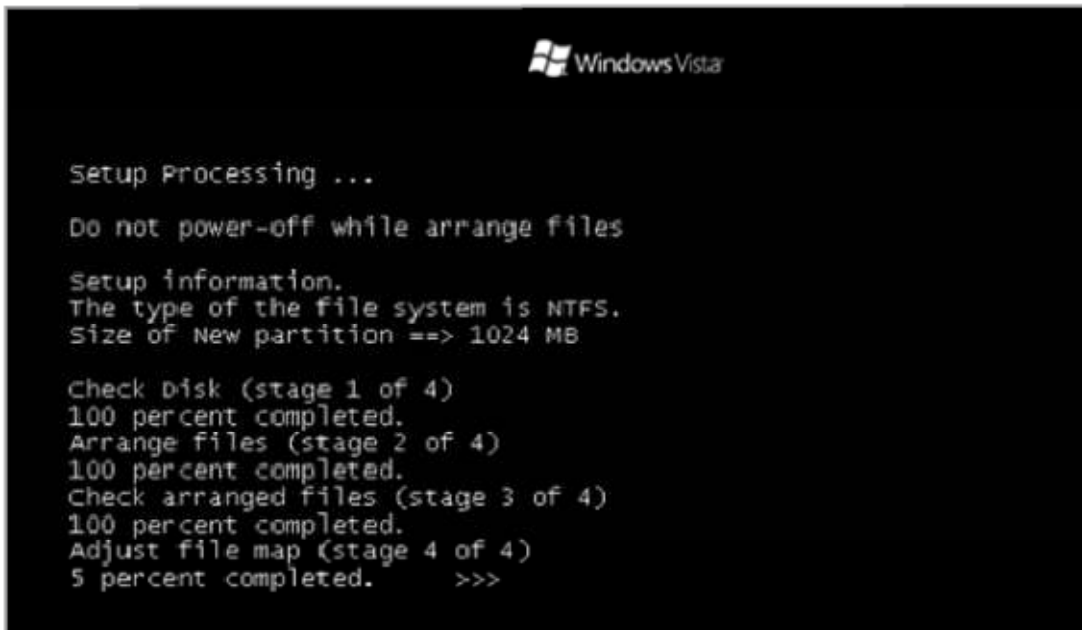
: Select [\[No creation of New Drive\]](#) and then click the [\[Next\]](#) button.

## 4) Restart Windows



Restart the System by clicking [\[Continue\]](#) button.

## 5) Hard Disk Partition and Basic Configuration of Program



As the system is restarted, [C: Drive] is checked for any potential problem that might prevent a normal installation of the product and a disk is partitioned for establishment of the basic environment for normal operation of the program.

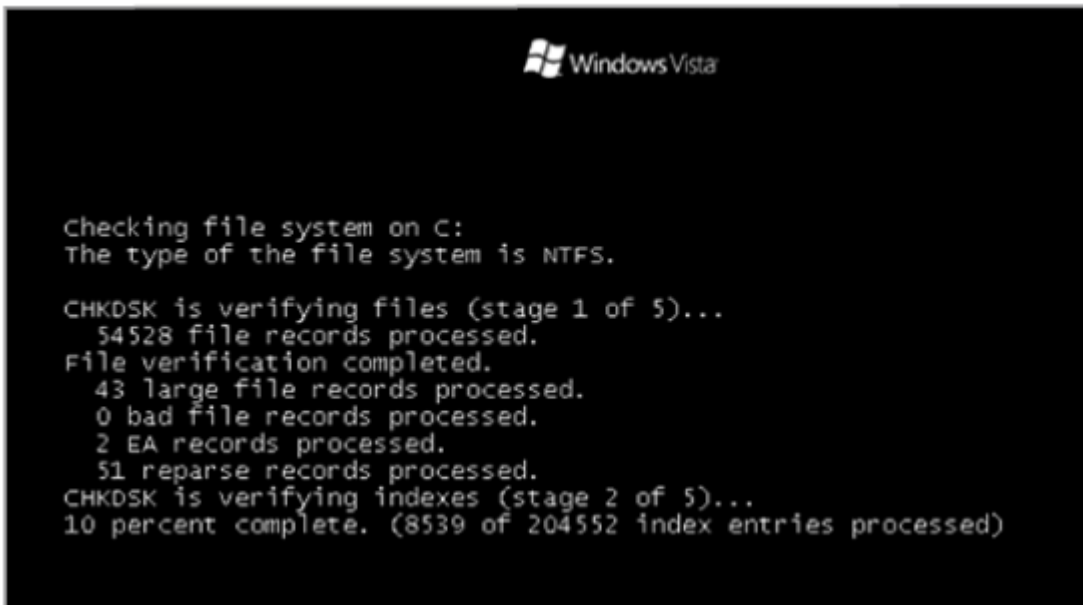
Upon completion of this stage, the computer is automatically restarted.

If there is a problem in [C: Drive] of the PC where the program is installed, the installation is halted with a four-digit error code presented

Please, refer to the [Chapter 4 Error Code and Responsive Measures: page62] for detailed information on error codes

It may take a while depending on the size of a partition set in the previous stage to save user data. It is recommended to go through [Disk Defragmentation: page22] prior to installation of the program to minimize the time.

## 6) Check Hard Disk



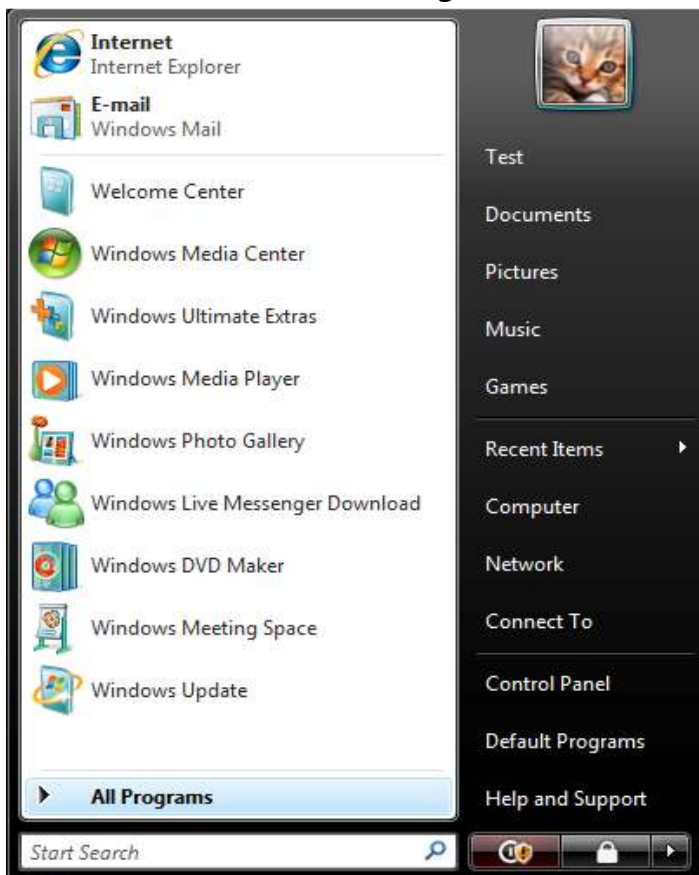
The File System is investigated to check if there is any problem as the system is automatically rebooted following the execution of the previous stage.

## 7) Automatic Conversion to Protection Mode

If booted with Windows following the installation of the Program, the system will automatically restart Windows in approximately one minute. Once Windows is restarted, it is automatically converted into [\[Protection Mode\]](#)

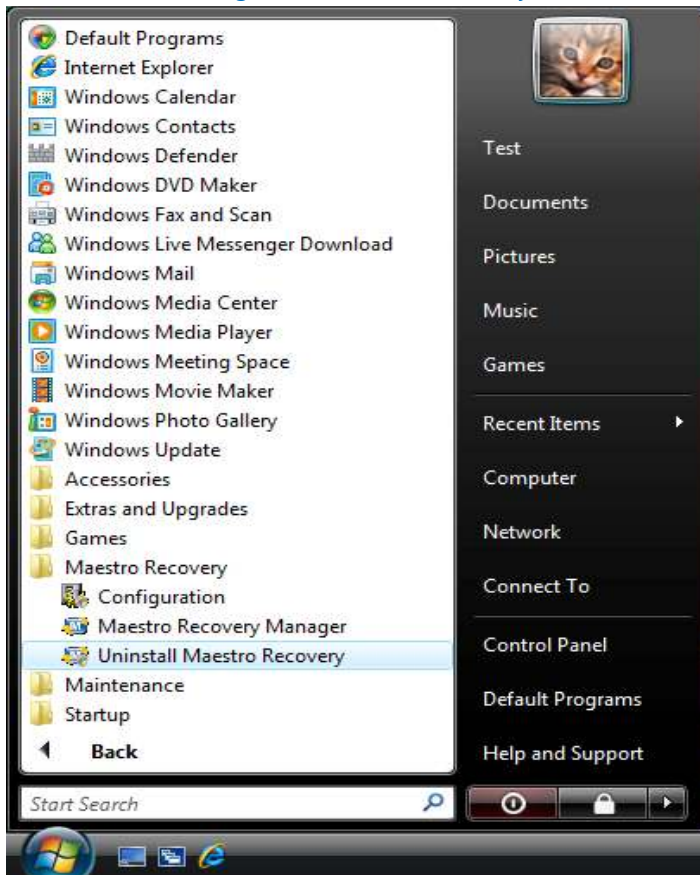
### 3. How to Delete the Program

#### 1) Execution of Deletion Program





Click [Start -> All Program -> Maestro Recovery -> Uninstall Maestro Recovery]



## 2) Selection of Deletion Option

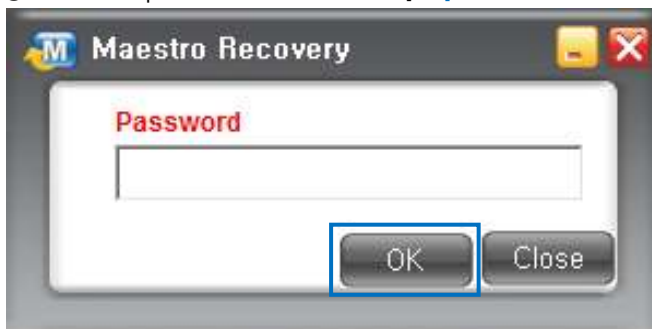


Select either [Save Current Status+ Deletion] or [Recovery + Deletion] and then click the [OK] button.

(1) If [Save Current Status+ Deletion] is selected

The [Save Current Status] command is executed before the program is deleted in order to maintain the system area as it is.

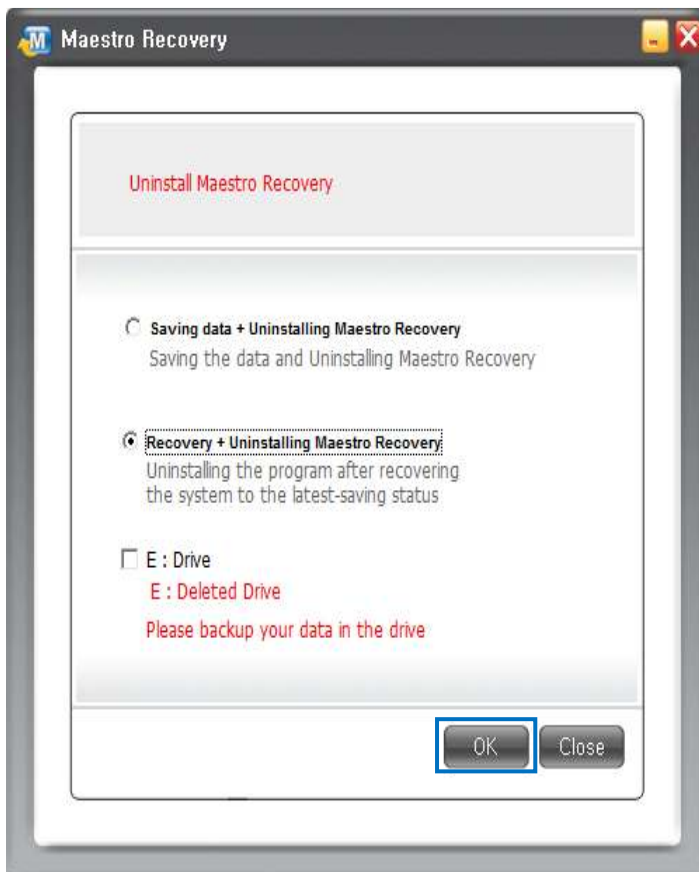
① Enter the password and click the [OK] button.



(2) If [Recovery + Deletion] is selected

The [System Recovery] command is executed before the program is deleted.

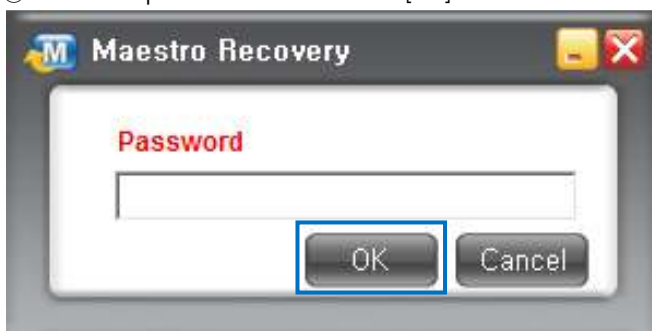
① Check the programs to be added and deleted when deleting the program and then click the [OK] button.



⑦ **Program to be added:** It is the program to be added if the **[Deletion]** command is executed with the deleted program after **[Recovery Save]**.

⑧ **Program to be deleted:** It is the program to be deleted if the **[Deletion]** command is executed with the installed program after **[Recovery Save]**.

② Enter the password and click the [OK] button.



### <Precautions>

#### ① **[D: Drive] Item**

It is the item that appears when creating a partition to save user data in when installing the program. The name of drive changes depending on the name of the user data partition.

#### ② **If [D: Drive] item is selected the program is deleted along with D: Drive.**

In this case, the user data including critical ones stored in D: Drive is deleted along with elimination of D: Drive.

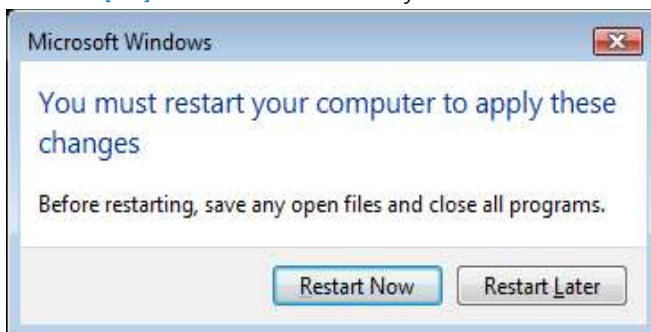
If you want to delete D:Drive, make sure to back up the user data including critical ones in another media before executing deletion of the program.

Our company shall not be held accountable for any loss of data stored in D:Drive that might occur if [\[D: Drive\]](#) is eliminated while deleting the program

③ **It is recommended not to check [\[D: Drive\]](#) item.**

### 3) Restart Windows

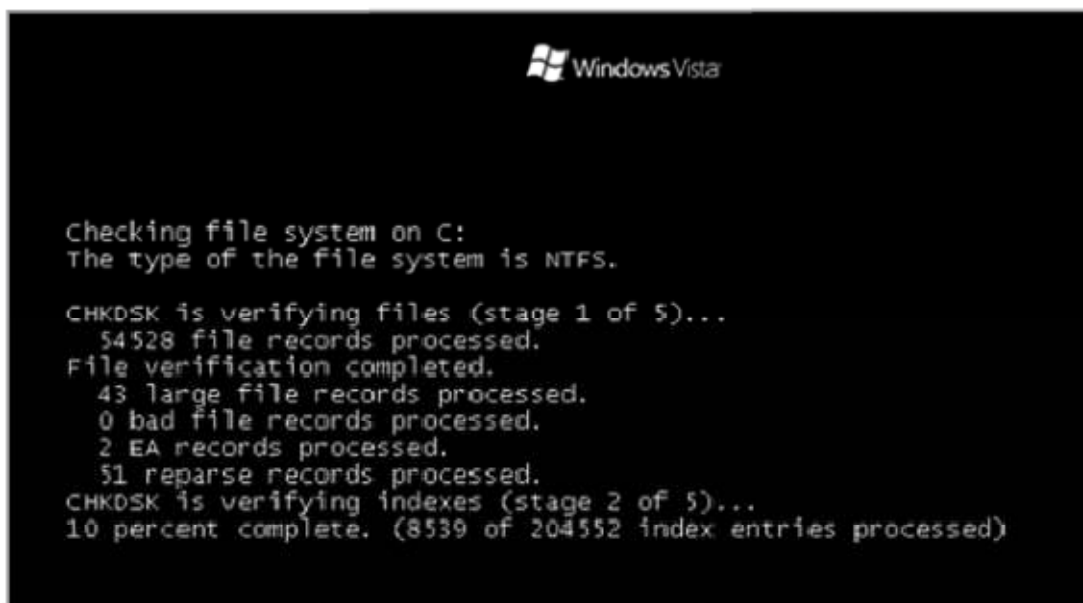
Click the [\[OK\]](#) button to restart the system.



### 4) Deletion of Basic Environment of Program

The existing basic environment is eliminated together with the user data partition in order to support the operation of Maestro Recovery program.

### 5) Check Hard Disk



The File System is investigated to check if there is any problem while the system is booted.

### 6) Elimination of Windows Driver

The Windows driver for the Maestro Recovery program is eliminated.

## >> Chapter 3 How to Use the Program

### 1. How to Use the Manager

- 1) Execution and Composition of Manager
- 2) System Recovery
- 3) Save Current Status
- 4) Start Protection
- 5) Halt Protection
- 6) Configuration
- 7) Change Password
- 8) Use Status
- 9) Information

### 2. Using Emergency Menu

- 1) Emergency Recovery
- 2) Emergency Removal

### 3. Windows Configuration Modification Program

- 1) Automatic Setting
- 2) Manual Setting

## 1. How to Use the Manager

### 1) Execution and Composition of Manager

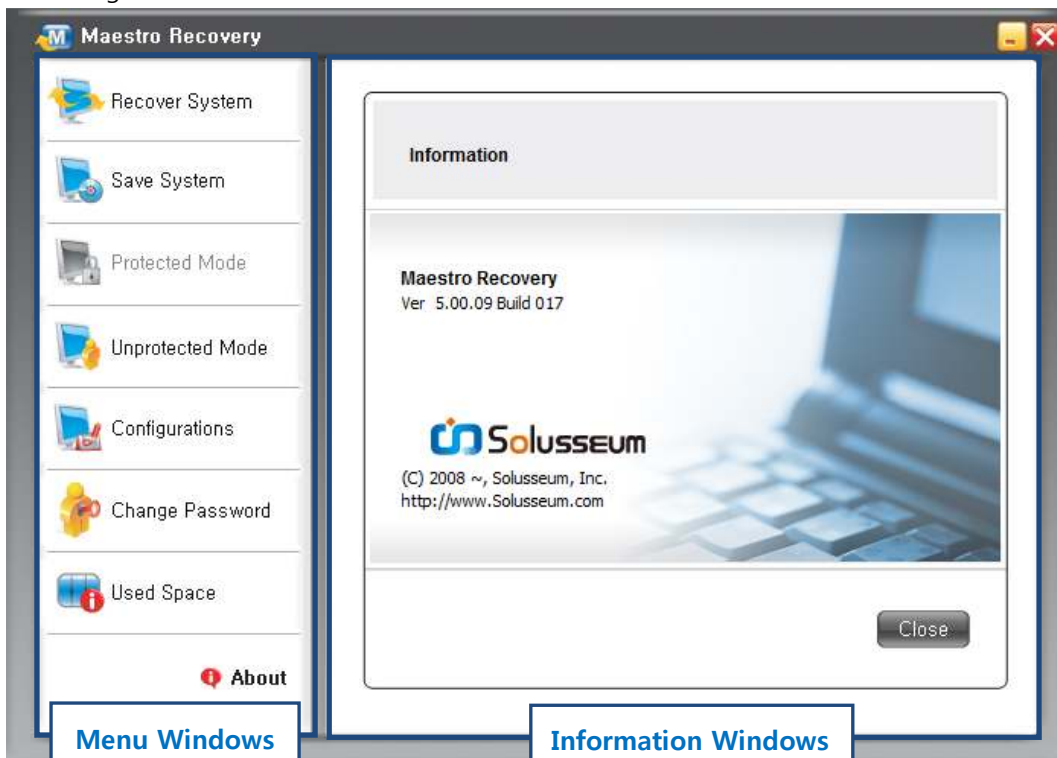


: Manager Icon while operated in Protection Mode



: Manager Icon while operated in Halt Protection Mode

Place the mouse pointer on the icon in the system tray on the bottom right corner and double-click it to execute the Manager.



Menu Window / Information Window

The Manager window consists of a menu window and information window.

The menu window contains a list of executable commands.

The Information window shows or enables a user to enter information needed for execution of the command selected in the menu window.

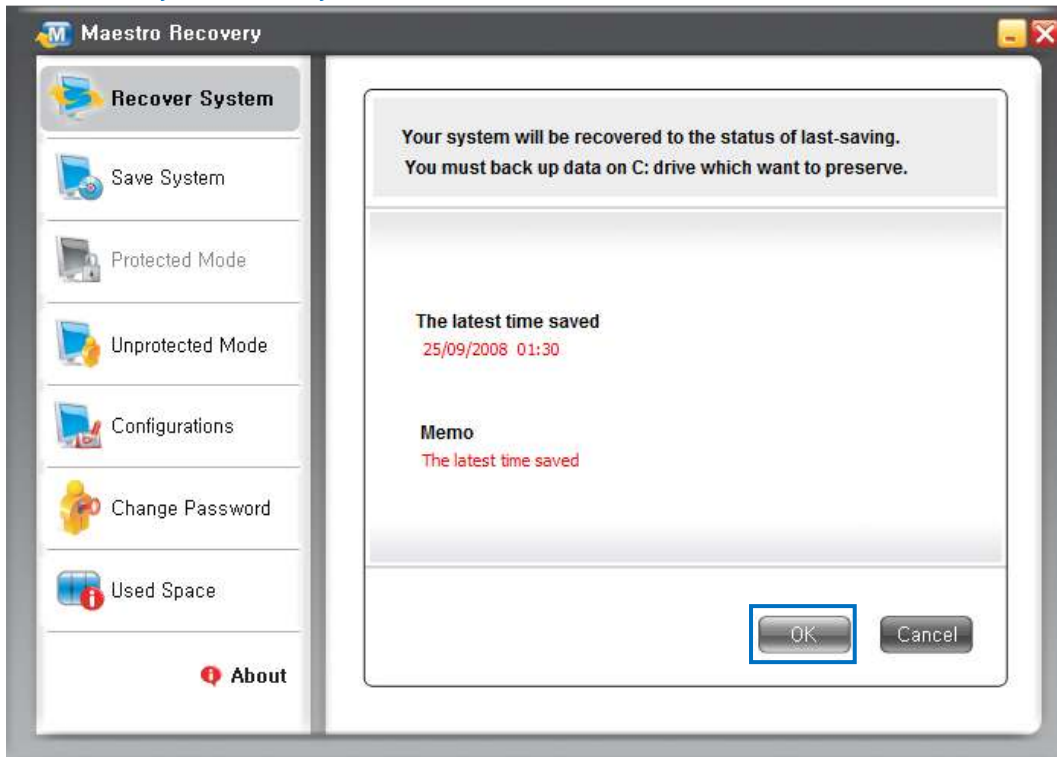
### 2) System Recovery

The [\[System Recovery\]](#) command reverses the system area(C: Drive) back to the state of Recovery Save.

The [\[System Recovery\]](#) command requires the process of restarting Windows.

## ■ Execution Order

- ① Click the [\[System Recovery\]](#) button in the menu window.

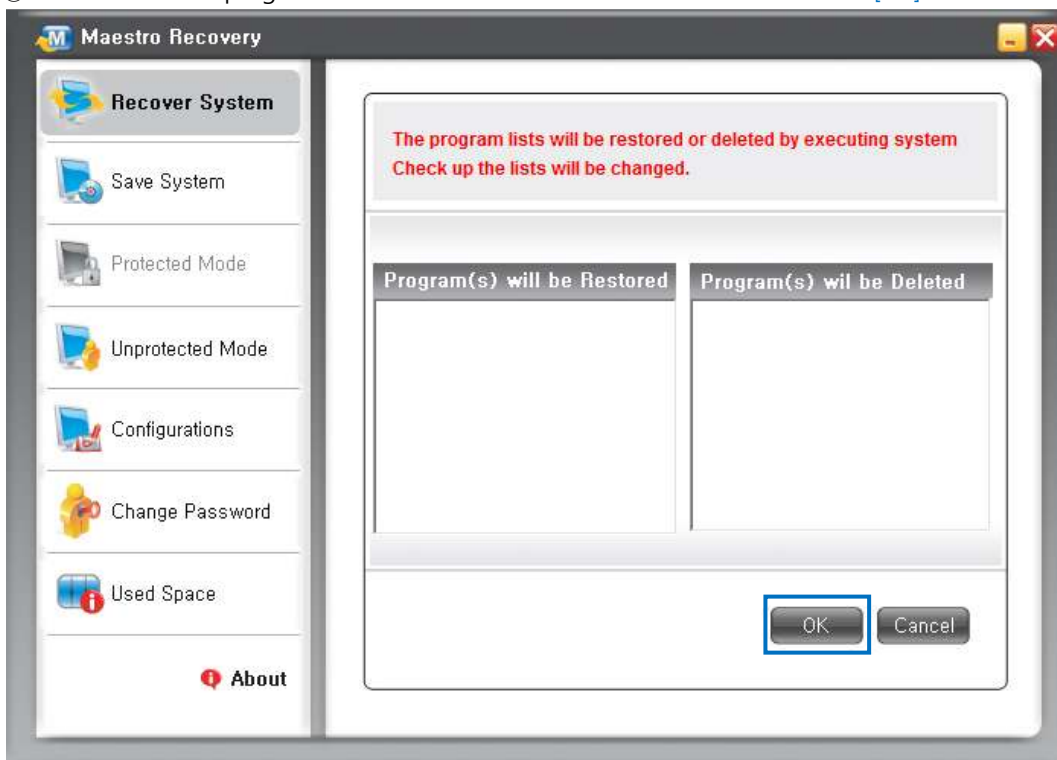


- ② If you execute the System Recovery command, check the [\[Date & Time of Saving Recovery\]](#) Information to be recovered and then click the [\[OK\]](#) button.

### <Reference>

- ▷ [Date & Time of Final Save](#): It refers to date & time for saving recovery.
- ▷ [Description](#): It is the user description at the time of saving recovery.

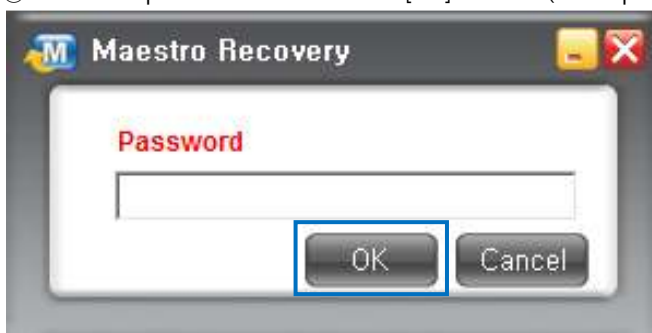
③ Check the list of programs to be recovered and to be deleted and click the [OK] button.



#### <Reference>

- ▷ **Programs to be recovered:** It refers to programs that have been deleted after [Date & Time of Saving Recovery] and that is to be recovered with the execution of [System Recovery] command.
- ▷ **Programs to be deleted:** It refers to programs that have been installed after [Date & Time of Saving Recovery] and that is to be deleted with the execution of [System Recovery] command.

④ Enter the password and click the [OK] button. (Initial password is set [maestro].)

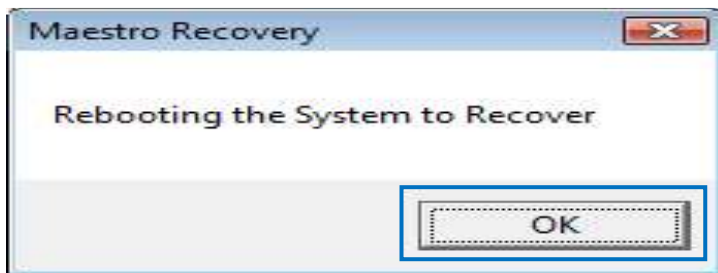


⑤ Click the [OK] button.

Windows is restarted to execute the [System Recovery] command.

Please, terminate all running programs.





#### <Precautions>

- ① With the execution of [System Recovery] command, the data stored in the system area(C: Drive) after [Date & Time of Saving Recovery] will be deleted.
- ② You should back up critical data stored in the system area(C: Drive) prior to execution of the [System Recovery] command.
- ③ Our company shall not be held accountable for any data loss that might occur due to execution of the [System Recovery] command.

#### Tip. Date & Time of Saving Recovery

The date & time of saving recovery is the very last stage following program installation, execution of Save Current Status command, execution of Begin Protection command in Halt Protection state.

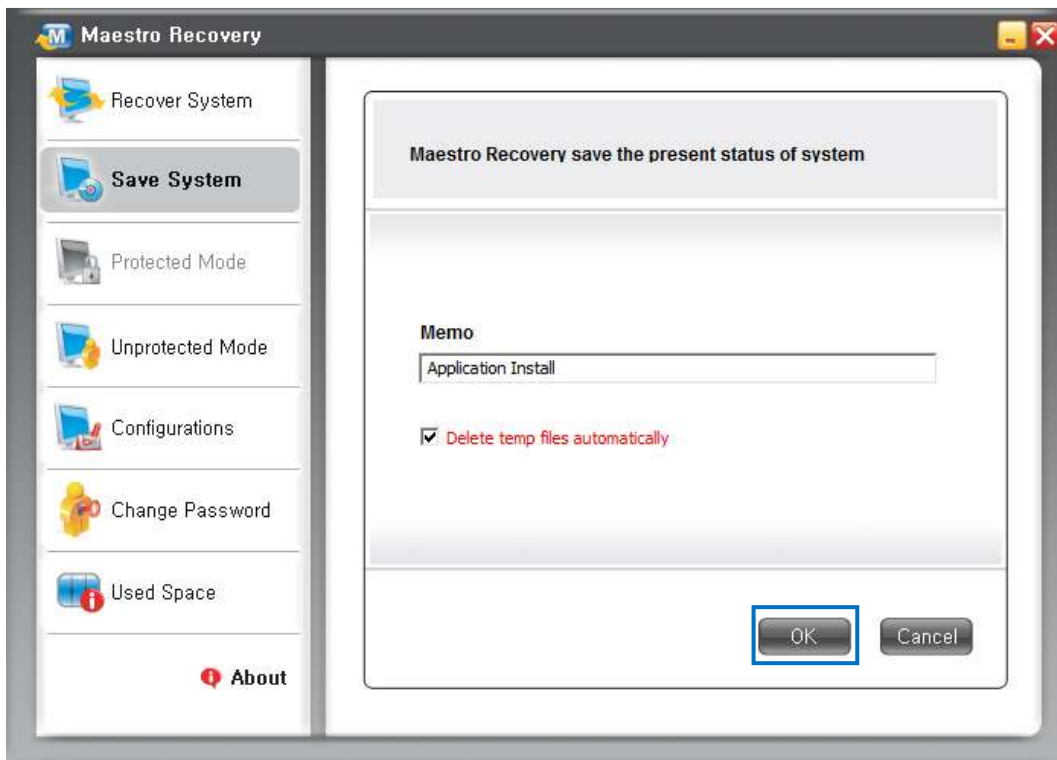
### 3) Save Current Status

The [Save Current Status] command changes [Date & Time of Saving Recovery] into the current system state.

The [Save Current Status] command requires the process of restarting Windows.

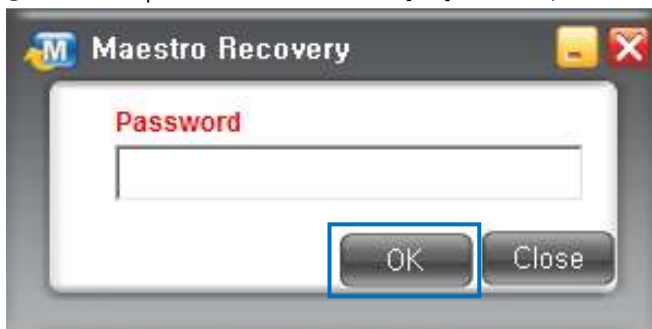
#### ■ Execution Order

- ① Click the [Save Current Status] button in the menu window.



② Enter description in the Information window, check whether temporary files are deleted and then click the [OK] button. If you check [Delete Temporary File.] the temporary files stored in [C: Drive] will be deleted prior to the execution of the [Save Current Status] command. (Recommended)

③ Enter the password and click the [OK] button. (The initial password is set [maestro].)



④ Click the [OK] button.

Restart Windows to execute the [Save Current Status] command.

Please, terminate all running programs.

### <Precautions>

- ① It is recommended to erase all unnecessary data stored in the system area(C: Drive) prior to execution of the [Save Current Status] command
- ② It is recommended to erase all unnecessary data using the [Clean Disk] utility prior to execution of the [Save

[Current Status](#)] command.

③ It is recommended to check and kill all viruses / malicious codes to optimize the state of the system area(C: Drive) [prior to execution of the \[Save Current Status\] command](#).

④ The execution of the [\[Save Current Status\]](#) command It may take a couple of minutes or more to execute the [\[Save Current Status\]](#) command depending on the use amount of the recovery program.

## 4) Start Protection

The [\[Start Protection\]](#) command restarts Windows in [\[Protection Mode\]](#).

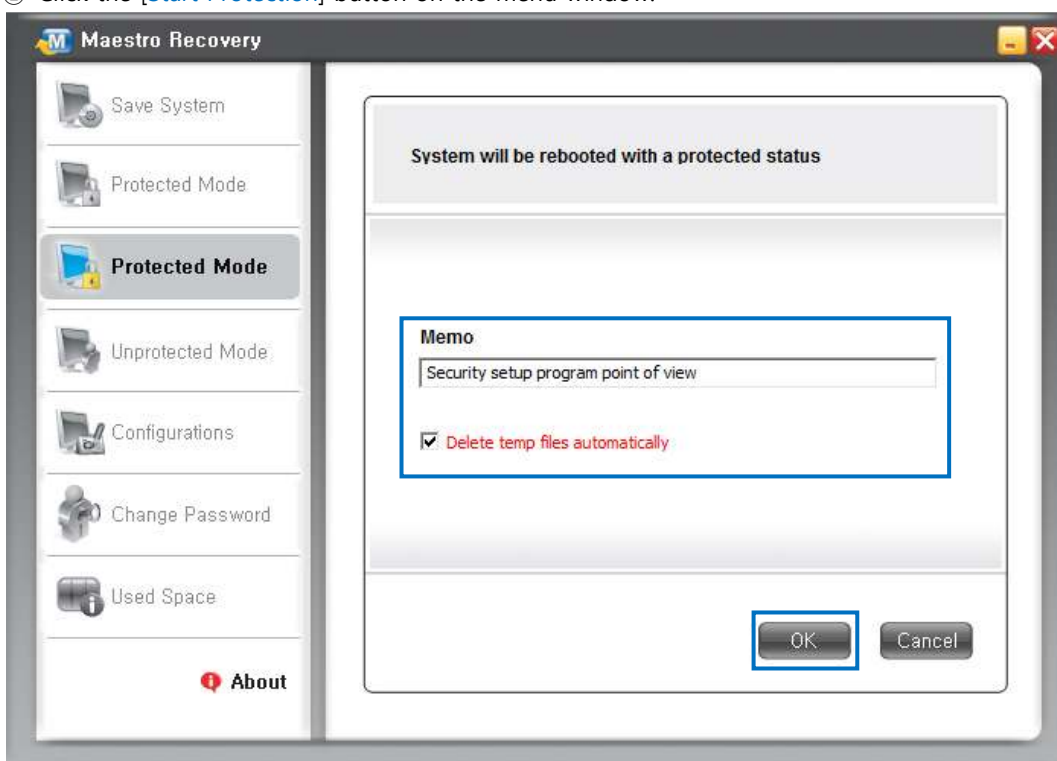
The [\[Start Protection\]](#) command is executable in [\[Halt Protection Mode\]](#) only.

The execution of Begin Protection command changes [\[Date & Time of Saving Recovery\]](#) into the state immediately before the execution of the [\[Start Protection\]](#) command.

The [\[Start Protection\]](#) command requires the process of restarting Windows.

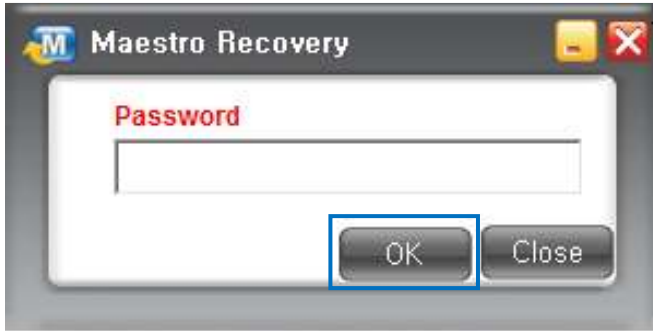
## ■ Execution Order

① Click the [\[Start Protection\]](#) button on the menu window.



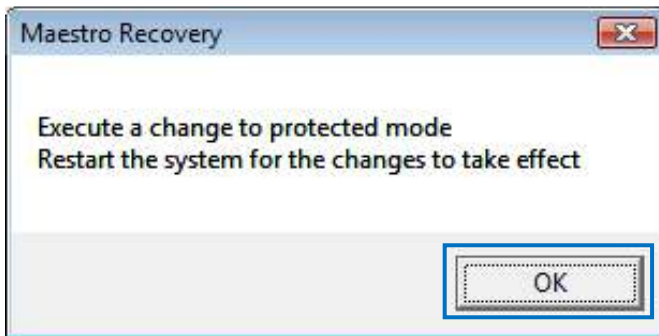
② Enter description in the Information window, check whether temporary files are deleted and then click the [\[OK\]](#) button. If you check [\[Delete Temporary File.\]](#) the temporary files stored in [\[C: Drive\]](#) will be deleted prior to the execution of the command.

③ Enter the password and click the [\[OK\]](#) button. (The initial password is set [maestro].)



- ④ Click the [OK] button.

Windows is restarted in [Protection Mode]. Please, terminate all running programs.



#### <Precautions>

- ① It is recommended to erase all unnecessary data stored in the system area(C: Drive) prior to execution of the [Start Protection] command
- ② It is recommended to erase all unnecessary data using the [Clean Disk] utility prior to execution of the [Start Protection] command.
- ③ It is recommended to run the [Disk Defragmentation] utility to optimize the state of the system area(C: Drive) prior to execution of the [Start Protection] command.
- ④ It is recommended to check and kill all viruses / malicious codes to optimize the state of the system area(C: Drive) prior to execution of the [Start Protection] command.

## 5) Halt Protection

The [Halt Protection] command restarts Windows in [Halt Protection mode].

The [Halt Protection] command is executable in [Protection Mode] only.


The [Halt Protection] command requires the process of restarting Windows.

#### <Precautions>

- ① The execution of the [Halt Protection] command automatically executes the [System Recovery] command. The data stored in the system area(C: Drive) will be deleted following [Date & Time of Saving Recovery]. Please, take extra caution with that.
- ② Make sure to back up critical data stored in the system area(C: Drive) prior to execution of the [Halt Protection]

command. Our company shall not be held accountable for any data loss that might occur due to execution of the [System Recovery] command.

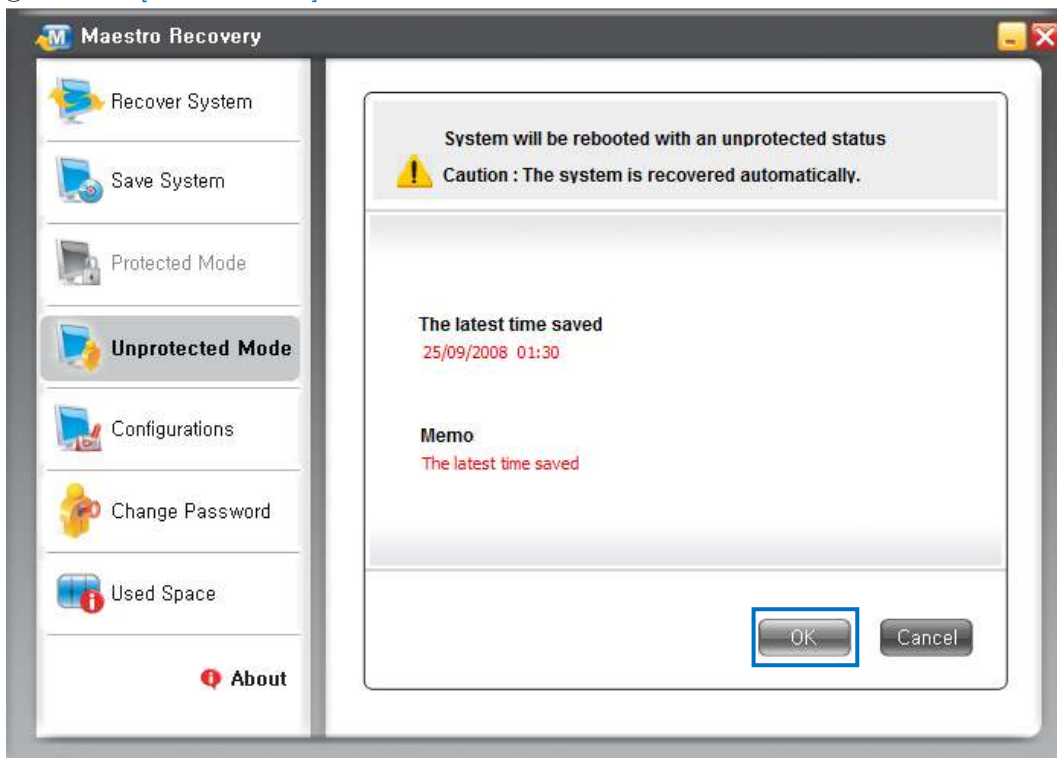
③ Since the [Halt Protection Mode] enables the recovery program to protect the system area(C: Drive) from virus/malicious code/user mistake, you should take precautions when changing the system area(C: Drive).

④ The manager icon will be changed to  in [Halt Protection Mode]

⑤ The [Start Protection] command only is executable in [Halt Protection Mode].

## ■ Execution Order

① Click the [Halt Protection] button on the menu window.

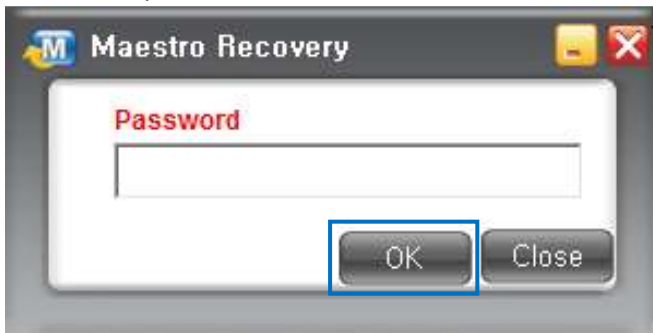


② Execute the Halt Protection command, Check the [Date & Time of Saving Recovery] Information and then Click the [OK] button.

## <Reference>

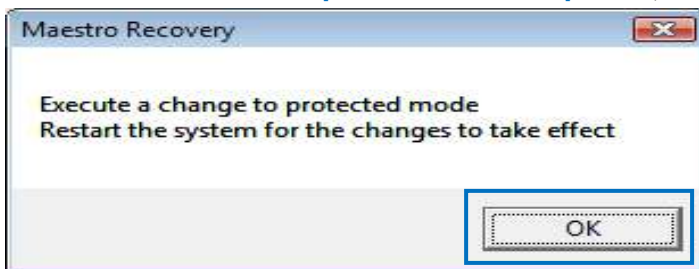
- ▷ **Date & Time of Final Save:** It refers to date & time for saving recovery.
- ▷ **Description:** It is the user description at the time of saving recovery.

- ③ Enter the password and click the [OK] button. (The initial password is set [maestro].)



- ④ Click the [OK] button.

Windows will be restarted in [\[Halt Protection Mode\]](#). Please, terminate all running programs.



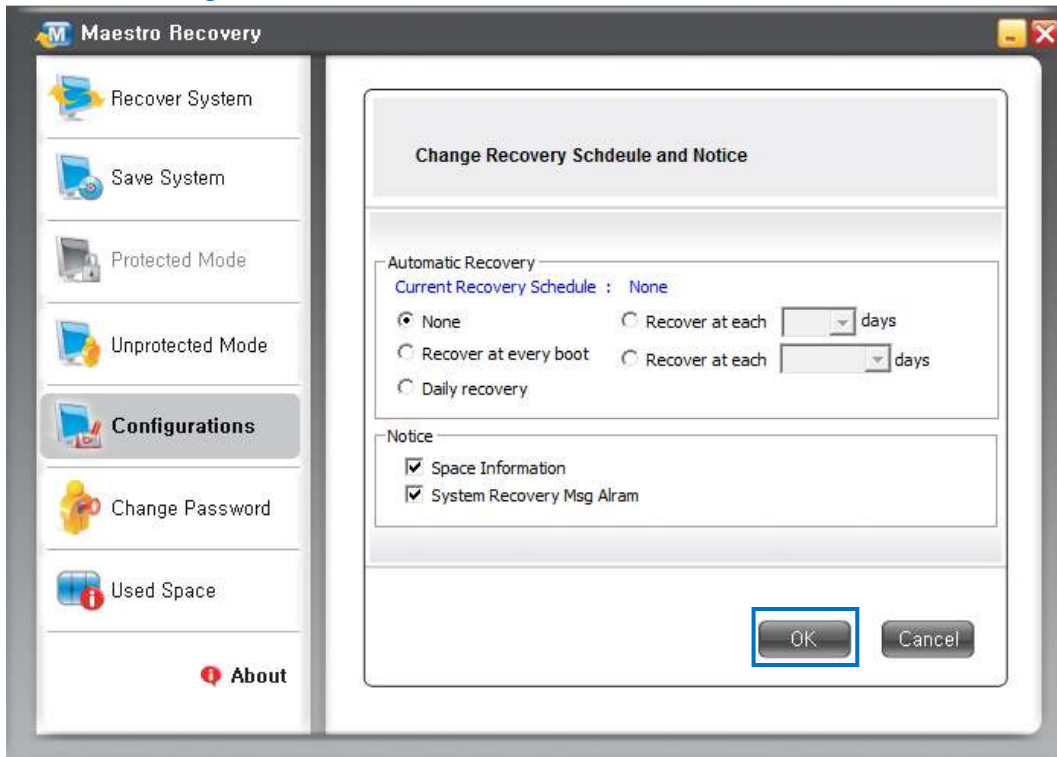
## 6) Configuration

The [\[Configuration\]](#) command changes Automatic System Recovery Period as well Alert Option.

The [\[Configuration\]](#) command does not require the process of restarting Windows.

## ■ Execution Order

① Click the [\[Configuration\]](#) button on the menu window.



### Tip. Recovery Period Option

The Recovery Period Option configures the recovery period to implement System Recovery automatically.

A variety of options are available including [\[Daily Recovery\]](#), [\[Set Recovery Period\]](#), and [\[Recovery on each Day of the Week\]](#). The base time of executing the [\[System Recovery\]](#) command when Windows is booted for the first time on a specific date is set 00:00 (hour:minute).

The [\[System Recovery\]](#) command is executed when Windows is rebooted for the first time after 00:00 (hour:minute).

### Tip. Recovery Period Option

▷ **No Configuration:** The [\[System Recovery\]](#) command is not executed automatically.

The system area(C: Drive) is recovered back to the Date & Time of Saving Recovery when executing such commands as [\[System Recovery\]](#) and [\[Halt Protection\]](#) only.

▷ **Recovery for Every Booting:** The [\[System Recovery\]](#) command is automatically executed whenever Windows is started.

▷ **Daily Recovery:** The [\[System Recovery\]](#) command is automatically executed when Windows is started for the first time every day.

▷ **Set Recovery Date:** The [\[System Recovery\]](#) command is automatically executed when Windows is started for the first time on a date specified.

▷ **Recovery on each Day of the Week:** The [\[System Recovery\]](#) command is automatically executed when Windows is started for the first time on a specific day of the week.

- ② Change the Recovery Period Option as well Alert Option before [Clicking the \[OK\] button](#).

### Tip. Alert Option

#### ▷ Free Space Alert

The Free Space Alert message is provided if the space used by Maestro reaches 80% or higher, that is, the space of the system area(C: Drive) is insufficient enough to cause a problem by setting this option. The alert message pops up in 30 seconds after execution of Manager and is maintained for five seconds.



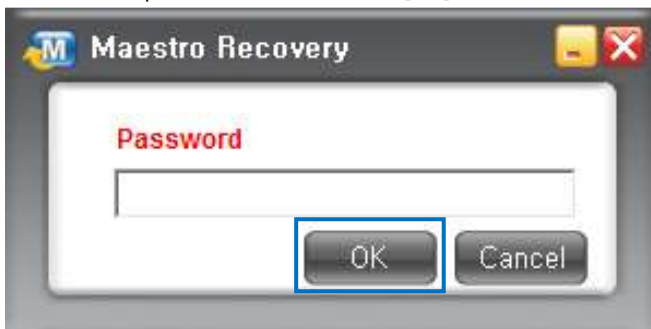
### Tip. Alert Option

#### ▷ System Recovery Alert

The alert message is provided if the space if the space used by Maestro reaches 5GB or higher by setting this option. If the space used by Maestro increases it takes more time to execute the [\[Save Current Status\]](#) command. Therefore, it is recommended to execute the [\[Save Current Status\]](#) command before the space used by Maestro gets unreasonably large. The System Recovery Alert pops up in five seconds after execution of Manager and is maintained for five seconds.



- ③ Enter the password and click the [OK] button. (The initial password is set [maestro].)





## 7) Change Password

The [\[Change Password\]](#) command enables users to change the password required to use the Manager.

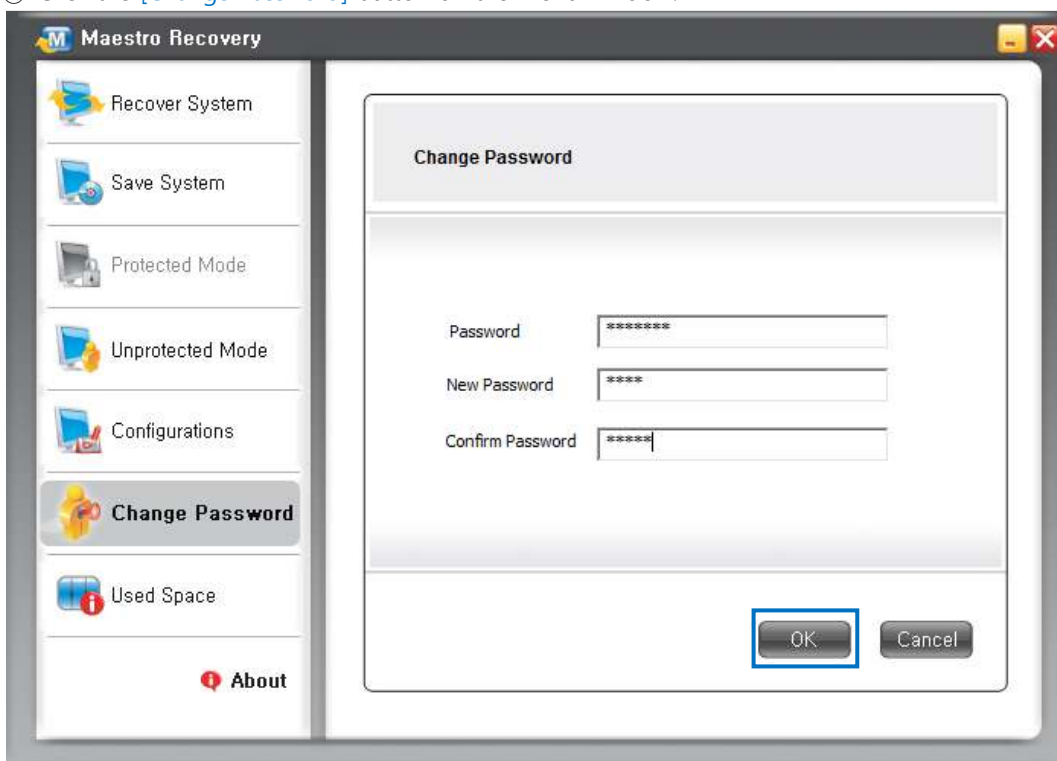
Please, take precautions not to have the password leaked. It is recommended to change the password on a regular basis to prevent the damage that might be incurred due to a password leak.

Don't forget the password because there is no way to find out the password once it is forgotten.

The password is case sensitive. The initial password is set `[maestro]`.

### ■ Execution Order

① Click the [\[Change Password\]](#) button on the menu window.



## 8) Use Status

The [\[Use Status\]](#) command inquires the space used by Maestro.

### Tip. Maestro Use Space

- ▷ Maestro use space is the space within [\[C: Drive\]](#) used by the recovery program to protect the system area(C: Drive).
- ▷ If the space used by Maestro is large it takes long to execute the [\[Save Current Status\]](#) command. Thus, it is recommended to execute the [\[Save Current Status\]](#) command before the space used by Maestro gets unreasonably large.

▷ The free space of [\[C: Drive\]](#) seen in Windows Explorer does not reflect the space used by Maestro, it is seen larger than the free space of [\[C: Drive\]](#) shown by the Manager. Therefore, the free space shown by the Manager is the actual free space of [\[C: Drive\]](#).

### <Precautions>

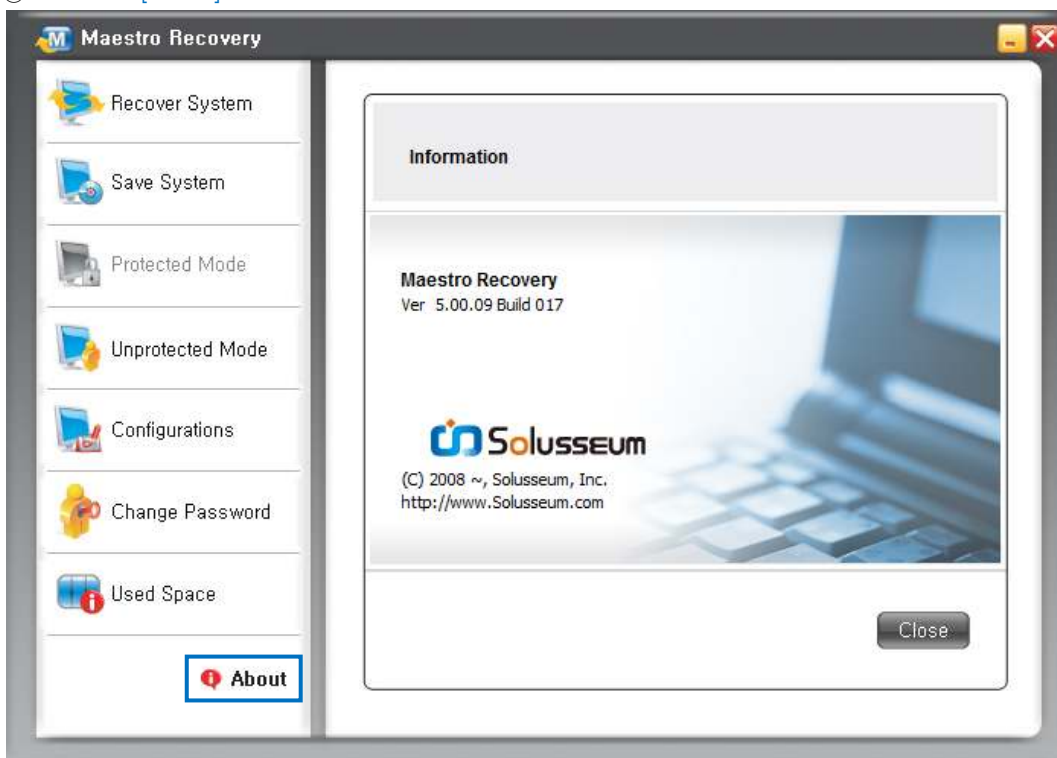
- ① If there is no free space available in [\[C: Drive\]](#) due to excessive amount of space used by Maestro, the [\[Write Delay\]](#) error will pop up.
- ② Once [\[Write Delay\]](#) occurs, do not ever execute the [\[Save Current Status\]](#) command as it can cause a problem to the system. The execution of the [\[System Recovery\]](#) command is recommended
- ③ In order to utilize the recovery program efficiently, maintain the reasonable amount of free space available by executing the [\[System Recovery\]](#) or [\[Save Current Status\]](#) command on a regular basis before the [\[Write Delay\]](#) error occurs.

## 9) Information

This command shows the product Information.

### ■ Execution Order

- ① Click the [\[About\]](#) on the menu window.



## 2. Using Emergency Menu

The Emergency Menu, comprised of [\[Emergency Recovery\]](#) and [\[Emergency Removal\]](#) commands, is used in case of emergency when you are not able to boot with Windows due to a critical fault in system.



If you want to execute the [\[Emergency Recovery\]](#) command when the Emergency Menu Idle Screen is shown after turning on the computer, Enter [\[R\]](#) or [\[r\]](#) key and if you want to execute the [\[Emergency Removal\]](#) command, enter [\[U\]](#) or [\[u\]](#) key and you will get access to the Emergency Menu.

Please, make sure to use [\[System Recovery\]](#), [\[How to Delete the Program\]](#) commands after booting the system with Windows.

The Emergency Menu command is recommended only when the system is not booted with Windows.

### 1) Emergency Recovery

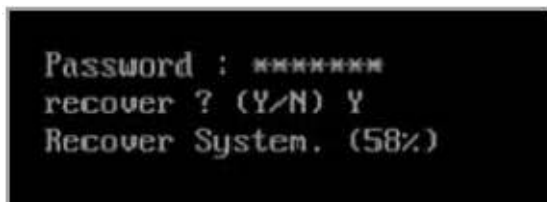
This command executes the [\[System Recovery\]](#) command when the system is not able to be booted with Windows.

#### ■ Execution Order

- ① Enter the [\[R\]](#) or [\[r\]](#) key in Emergency Menu Idle Screen.
- ② Enter the password and click the [\[Enter\]](#) key.
- ③ Enter the [\[Y\]](#) or [\[y\]](#) key if you want to execute the [\[Emergency Recovery\]](#) command.

[\[Would you like to Perform Recovery?\]](#)

- ④ Execute the [\[Emergency Recovery\]](#) command and boot it with Windows.



### 2) Emergency Removal

This command deletes the recovery program when the system is not able to be booted with Windows. If it can be booted with Windows it is recommended to boot it with Windows and then eliminate the recovery program.

## ■ Execution Order

- ① Turn on the power of PC.
- ② Enter the [U] or [u] key in the Emergency Menu Initial Screen.
- ③ Enter the password and click the [Enter] key.
- ④ Enter the [Y] or [y] key if you want to execute the [Emergency Removal] command  
[Would you like to Delete?]
- ⑤ Enter the Deletion Option Number and click the [Enter] key.  
(Menu 3 and 4 appear only when creating the user data partition during installation of the program.)
  - ㉞ System Recovery + Elimination
  - ㉟ Save Current Status+ Elimination
  - ㊱ System Recovery + Deletion of User Data Partition + Elimination
  - ㊲ Save Current Status+ User Data Partition + Elimination
- ⑥ Enter the [Y] or [y] key and then click the [Enter] if you want to execute the [Emergency Removal] command.  
Enter the [N] or [n]key and then click the [Enter] if you want to cancel the [Emergency Removal] command.

```
Uninstall ? (y/n)y

1. recover + Uninstall
2. save + Uninstall
3. recover + delete user drive + Uninstall
4. save + delete user drive + Uninstall
=====
Select : 3

Your Selection :
  3. recover + delete user drive + Uninstall

Are you sure ? (y/n) _
```

### <Precautions>

- ① It is recommended not to eliminate User Data Partition when eliminating Recovery Module. You are not able to find data saved in the partition if User Data Partition is eliminated. Our  
Our company shall not be accountable for any data loss that might occur due to elimination of User Data Partition.
- ② If you execute [2. save + Uninstall], [4. save + delete user drive + Uninstall] commands before Windows is started in a normal manner, Windows is not started in a normal manner after elimination of the recovery program. You have to execute either [1. Recovery + Uninstall] or [3. Recover + delete user drive + Uninstall] command if Windows is not started in a normal manner.
- ③ If some critical user data is stored in the system area(C: Drive) when Windows is not started in a normal manner,

it is recommended to execute either [2. save + Uninstall] or [4. save + delete user drive + Uninstall] command to move the concerned hard disk to another computer for recovery before reinstalling Windows.

If you execute either [1. Recovery + Uninstall] or [3. Recover + delete user drive + Uninstall] command, you are not able to find the user data saved in the system area(C: Drive) after the date & time of saving recovery.

### 3. Windows Configuration Modification Program

The Windows Configuration Modification Program changes the Windows configuration with [C: Drive] set as default storage folder to a partition other than [C: Drive]..

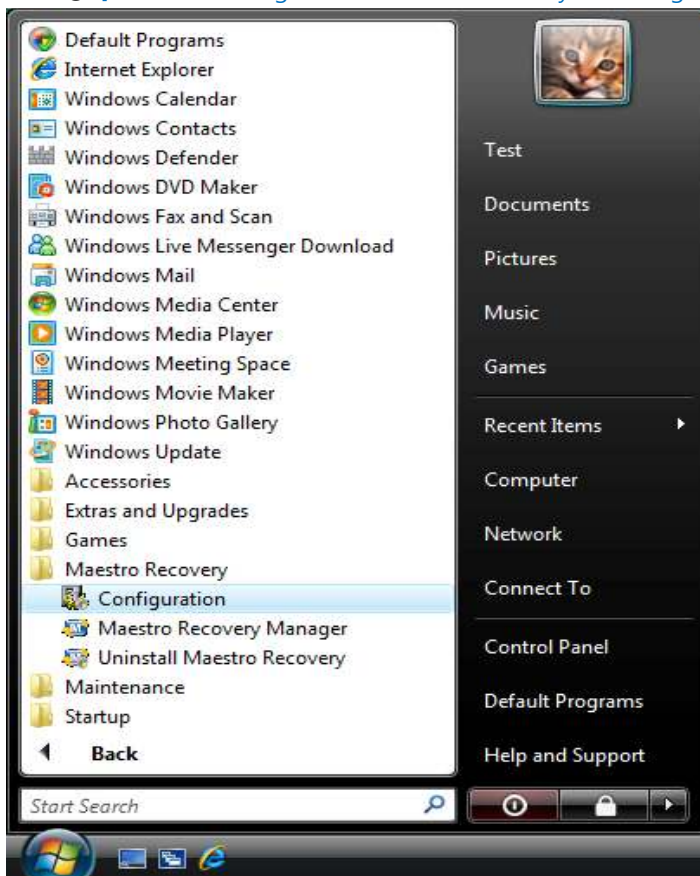
Since the execution of the [System Recovery] command deletes all data saved in the system area(C: Drive), it is strongly recommended to change the configuration of default storage folders into other partition using the Windows Configuration Modification Program.

#### 1) Automatic Setting

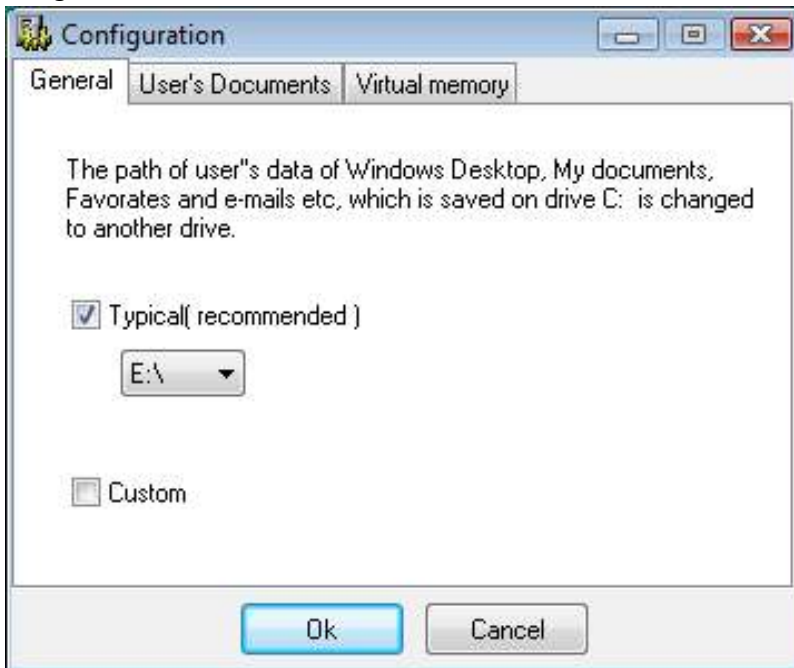
This is to facilitate changing Windows configuration folders. Use of Automatic Setting is highly recommended.

#### ■ How to Configure Automatic Setting

Click ① [Start -> All Program -> Maestro Recovery -> Configuration]



- ② Check the [\[Automatic Setting\]](#) item on the [\[General Setting\]](#) tab, select the partition to set Windows configuration value in and then click the [\[OK\]](#) button.



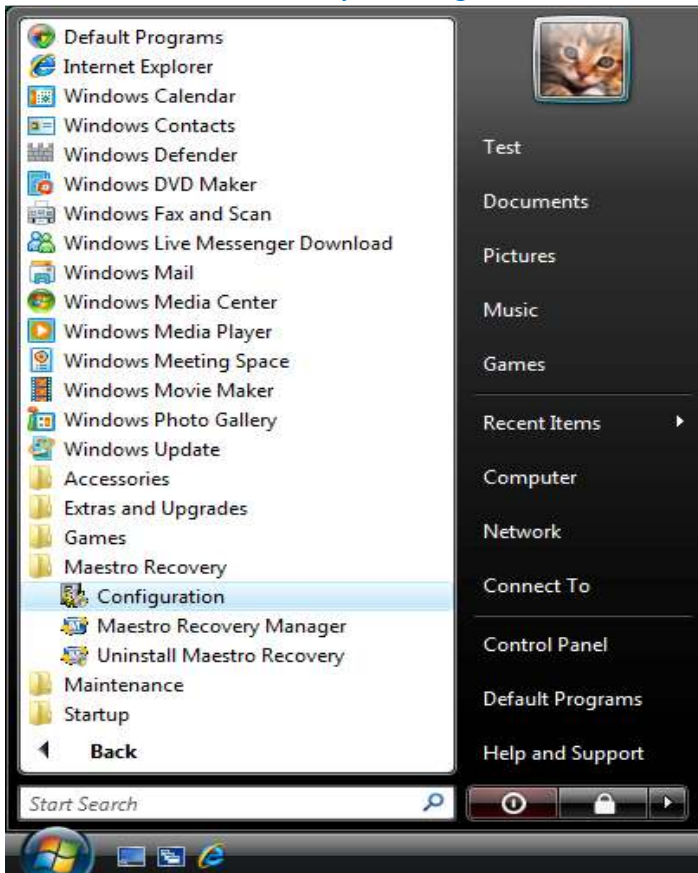
- ③ Change the Windows configuration by setting [\[My Document\]](#), [\[Bookmark\]](#), [\[Desktop\]](#), [\[Mail\]](#), [\[Virtual Memory\]](#) folders into a designated Drive and copy files saved in existing folders.

## 2) Manual Setting

It is used to change each of [\[My Document\]](#), [\[Bookmark\]](#), [\[Desktop\]](#), [\[Mail\]](#), and [\[Virtual Memory\]](#) folders, respectively.

## ■ How to Configure Manual Setting

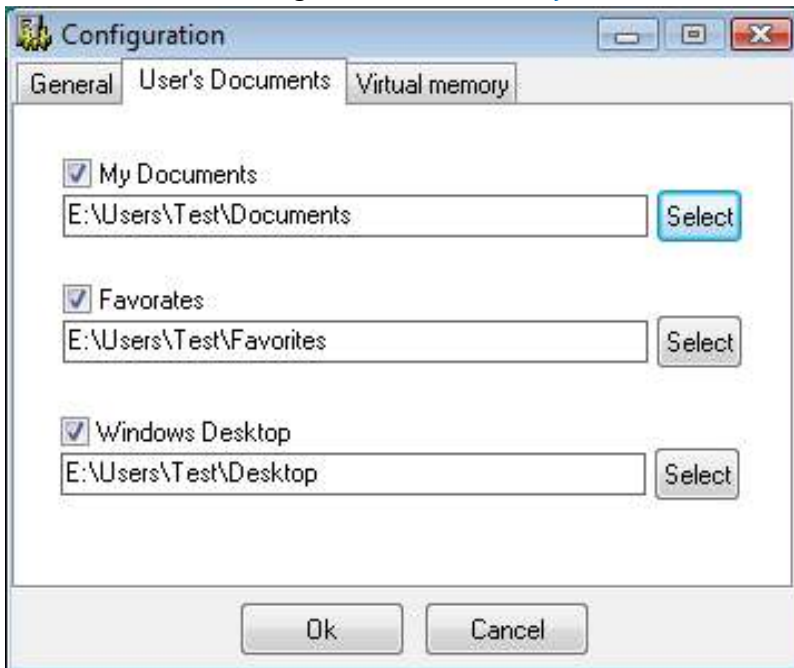
- ① Click the [Maestro Recovery -> Configuration].



- ② Check [Manual Setting] on the [General Setting] tab.

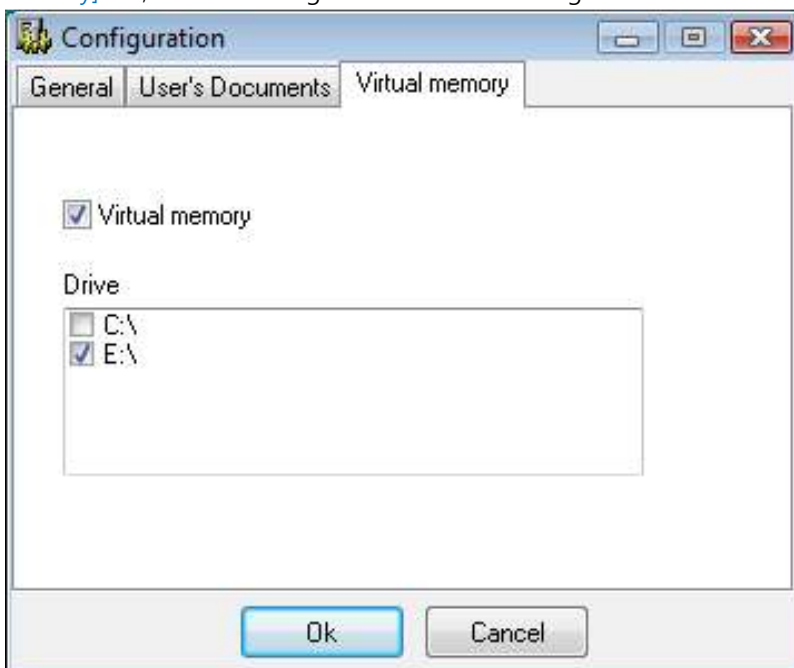


- ③ Check the item to change the folder on the [\[My Document\]](#) and then designate the folder



- ④ If you want to change the storage to save [\[Outlook Express Email\]](#), check [\[Outlook Express Mail Box\]](#), [\[Outlook Express Address Book\]](#) option on [\[Mail\]](#) tab, enter the location to save and then Click the [\[OK\]](#) button.

- ⑤ If you want to change the storage to save [\[Virtual Memory\]](#) check the [\[Virtual Memory\]](#) option on the [\[Virtual Memory\]](#) tab, and then designate the Drive to change.



- ⑥ Click the [\[OK\]](#) button if you select all items to change Windows Configuration
- ⑦ It will change the Windows Configuration of selected items and copy files saved in existing folders.



## >> Chapter 4 Error Code and Responsive Measures

[Error Code and Responsive Measures]

## 1. Error Code -1001 ~ -1999

- ▷ This error occurs when a File System cannot be installed due to its own internal error(s)
- ▷ It might occur if the program is not installed in a normal fashion due to the existing recovery program from other vendors.

### ■ Responsive Measures

- » Run the [\[Scan Disk\] to correct the](#) File System before reinstallation of the program.
- » If errors are not corrected with [\[Scan Disk\]](#) reinstall the Windows operating system before installing the recovery program.
- » If there is a recovery program installed, eliminate the existing recovery program first before installing the program.

## 2. Error Code -1008, -3003, -3004

- ▷ It occurs when the available free space of [\[C: Drive\]](#) is not enough due to excessive amount of space designated for [\[User Data\]](#) area.

### ■ Responsive Measures

- » Resize the [\[User Data\]](#) area before reinstalling it.

## 3. Error Code -2001 ~ -2999

- ▷ It occurs when there is a possibility of causing a critical performance degradation following installation of the program due to errors within the File System or failure of defragmentation.

### ■ Responsive Measures

- » Correct the errors in the File System by running [\[Scan Disk\]](#) and [\[Disk Defragmentation\]](#) before reinstalling the program.
- » If [\[Scan Disk\]](#) and [\[Disk Defragmentation\]](#) are not performed in a normal fashion or the same problem persists even after the execution of these utilities, reinstall Windows operating system before reinstalling the program.

## 4. Error Code -3002, -3005

- ▷ This error indicates the File System Information of partition table and that of boot table in [\[C: Drive\]](#) are inconsistent.

### ■ Responsive Measures

- » Have the File System Information of both partition table and of boot table in [\[C: Drive\]](#) consistent by modifying the information in the boot table in [\[C: Drive\]](#) using the program that modifies the partition table before reinstalling the program.

## 5. [Maestro Corrupt!] Error

- ▷ It occurs if another recovery program is installed or the program is not installed in a normal fashion.
- ▷ It occurs on a computer where the program is installed using the image backed up using the Image Backup Program such as Ghost.

### ■ Responsive Measures

» The system in which the Maestro Recovery program is installed does not support the image copy using the Image Backup Program such as Ghost.

» If Windows is installed using the Image Backup Program, boot the system with DOS using a DOS-bootable floppy disk or CD.

Type the [\[fdisk / MBR\]](#) command and the [\[Enter\]](#) key on the DOS window.

» If an error occurs during installation, eliminate the Maestro Recovery program using the [\[F4\]](#) key while eliminating any other recovery program that has been installed before reinstalling the Maestro Recovery program.

» Consult with your sales agency if the recovery program is not properly installed or the same error persists even after reinstallation.

## 6. [Write Delay] Error on Windows

- ▷ It occurs if there is insufficient space of [\[C: Drive\]](#) left for the recovery program to use.

### ■ Responsive Measures

» Execute the [\[System Recovery\]](#) command or restart Windows to [\[Emergency Recovery\]](#) command.

### ■ Preventive Measures

» Maintain the [\[Maestro Use Space\]](#) within a reasonable range by executing [\[System Recovery\]](#) command or [\[Save Current Status\]](#) command on a regular basis.

#### <Precautions>

Execution of [\[Save Current Status\]](#) saves the impaired system as the recovery source, there is no way to recover the system area([C: Drive](#)).

## **[Technical Inquiry]**

This manual is subject to change for such reasons as the functional improvement of the product.

The detailed Information on this will be provided on the company website.

We do not warranty the recovery of lost data. Please, make sure to back up critical data on a regular basis in order to prevent unexpected loss or damage

Please, contact us via information provided below for information on or purchase of the product.

## **Solusseum Inc.**

TEL: 82-2-2109-5589(Main Number) / FAX: 82-2-2109-5590

Website: [www.solusseum.com](http://www.solusseum.com)

E-ma: [master@solusseum.com](mailto:master@solusseum.com)

Copyright©2008 Solusseum, Inc. All right reserved\_\_