



MilesightVMS

User Manual

Version V2.05

Please read this manual carefully before operation and set it aside for further reference.

Table of Contents

Chapter I Introduction.....	3
1.1 MilesightVMS Introduction	3
1.2 Key Features	3
Chapter II Installation	4
2.1 System Operating Environment.....	4
2.2 Installation Guide	4
Chapter III Operations and Settings	8
3.1 Login MilesightVMS	8
3.2 Settings.....	8
3.2.1 Device Settings	9
3.2.2 Search Device	10
3.2.3 Alarm Settings	11
3.2.4 Record Settings.....	12
3.2.5 Change Password	13
3.2.6 Local Settings	13
3.3 File	13
3.4 Tool.....	14
3.5 Help	15
3.6 Toolbar.....	15
Chapter IV Live view	16
4.1 Device Tree Window.....	17
4.2 Live toolbar.....	18
4.3 Live view workspace	18
4.4 PTZ control.....	18
Chapter V Playback	20
Chapter VI Map	23
6.1 Toolbar.....	23
6.2 Pop-up Menu	24
6.3 Add the hot.....	24
Chapter VII Service	25

Chapter I Introduction

1.1 MilesightVMS Introduction

MilesightVMS is a video management system that works with the IP cameras to provide video monitoring, recording setting and event management functions. It is a future-proof network video solution for up to 64 cameras. Adding new cameras to the system is easy. No extra charge of additional equipment needed. The interface is simple and intuitive, with easy access to the most common activities, such as viewing live video, searching through recordings and exporting videos and snapshots. Able to integrate with other devices through ONVIF.

This manual describes how to use and manage the MilesightVMS in your networking environment. Some knowledge of networking environments would be beneficial to the reader.

Should you require any technical assistance, please contract authorized service center.

1.2 Key Features

- ✧ Support 1/ 2/ 4/ 6/ 9/ 13/ 16/ 36/ 64channels playing synchronously
- ✧ Full screen for single or multiple channels
- ✧ The original screen size can adjust to screen ratio of 16:9 and 4:3
- ✧ Multiple play status display
- ✧ Motion detection, alarm recording and image capture function
- ✧ H.264/MJPEG/MPEG-4 video compression
- ✧ Support dual-stream
- ✧ Support multiple PTZ control protocols
- ✧ Support ONVIF
- ✧ Easy to install and use
- ✧ Scalable and future-proof

Chapter II Installation

2.1 System Operating Environment

OS: Windows XP/7/Vista/Server 2000/Server 2008

CPU: 1.66GHZ or faster

Memory: 1G MB or more

Graphic memory: 128MB or more

Internet protocol: TCP/IP

2.2 Installation Guide

Run the Installation file and install the programs on your computer by following the on-screen instructions. After finishing installation, you will find the programs on the start menu or on the desk.

Step1:



Figure 1

Step2:

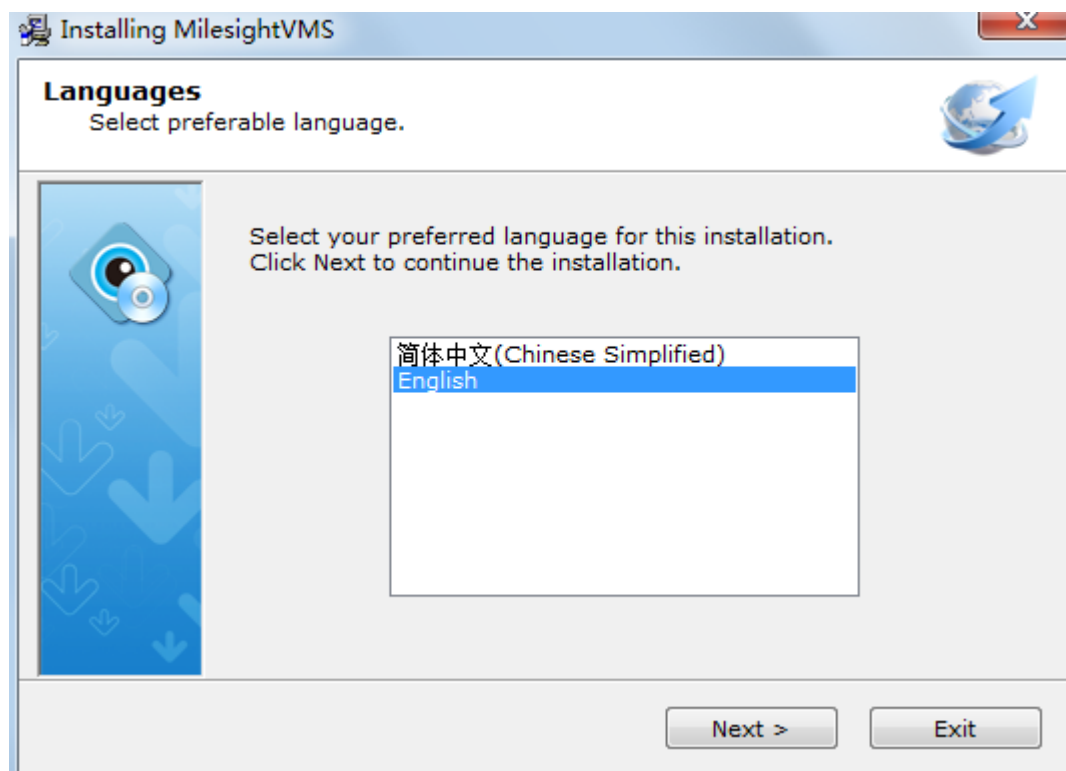


Figure 2

Step3:



Figure 3

Step4:

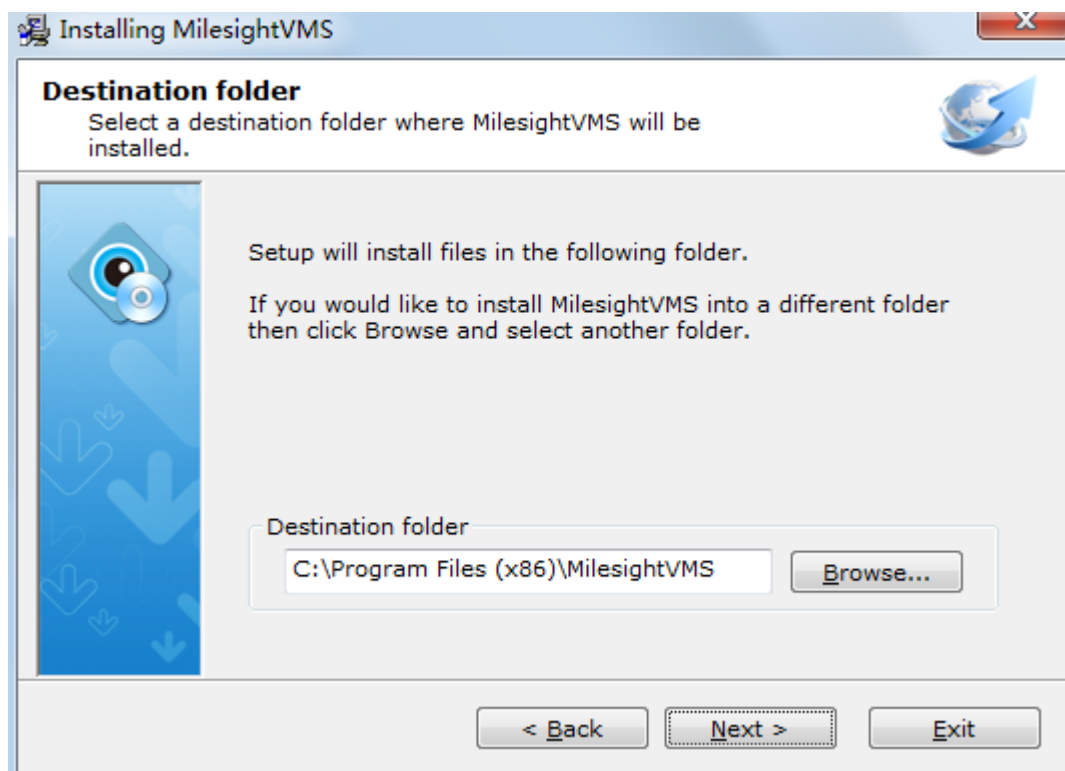


Figure 4

Step5:

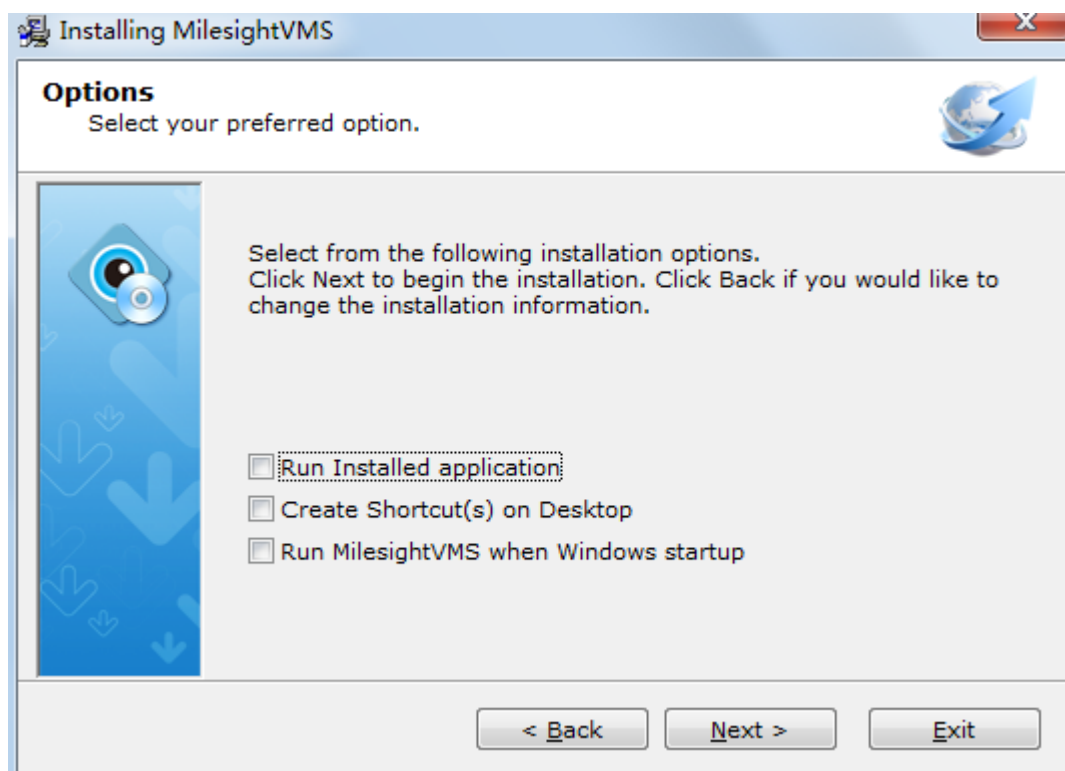


Figure 5

Step6:

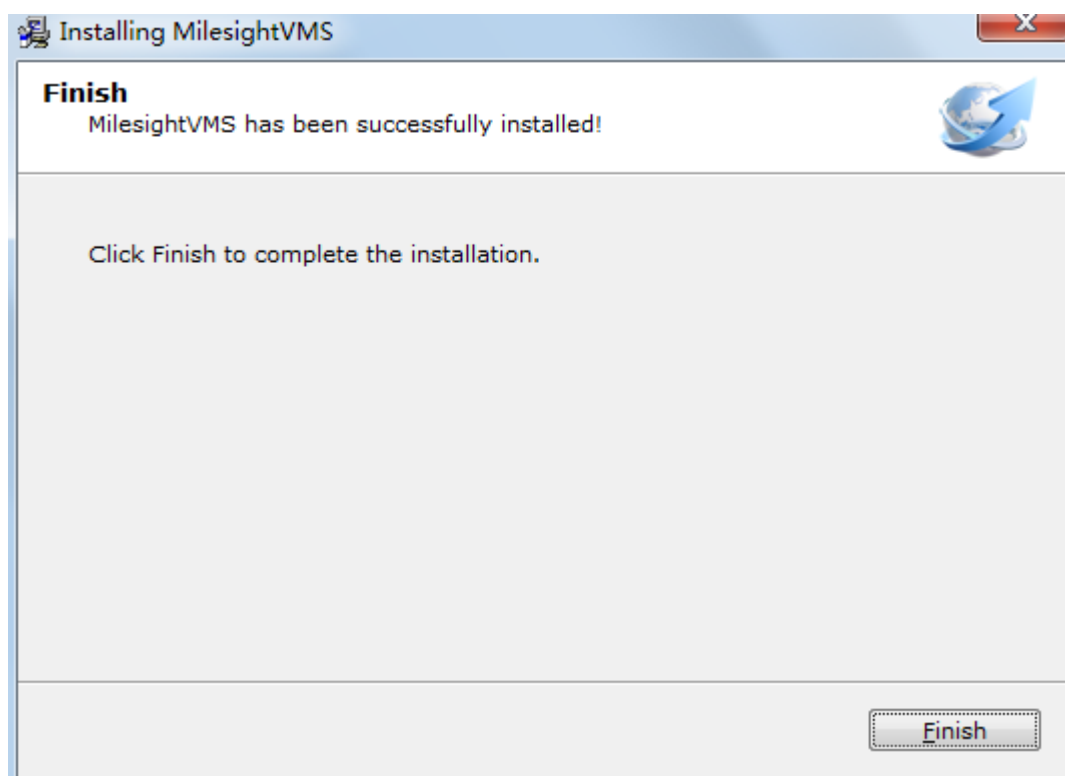


Figure 6

Chapter III Operations and Settings

3.1 Login MilesightVMS

When login MilesightVMS, a window will pop up as below. There are two default user names 'admin' and 'viewer'. The 'admin' user has all operation rights, while the 'viewer' user has no rights to modify any settings but view the videos only. The default password is 'password'. If the [Auto Login] is selected, MilesightVMS will login without keying in the Username and Password next time.

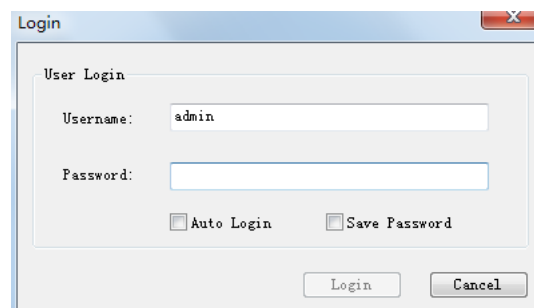


Figure 7

3.2 Settings

The first time you login MilesightVMS, set the device first. Including search devices, add them to the live view window, set motion detections, set recording schedule, etc. Details are as below.

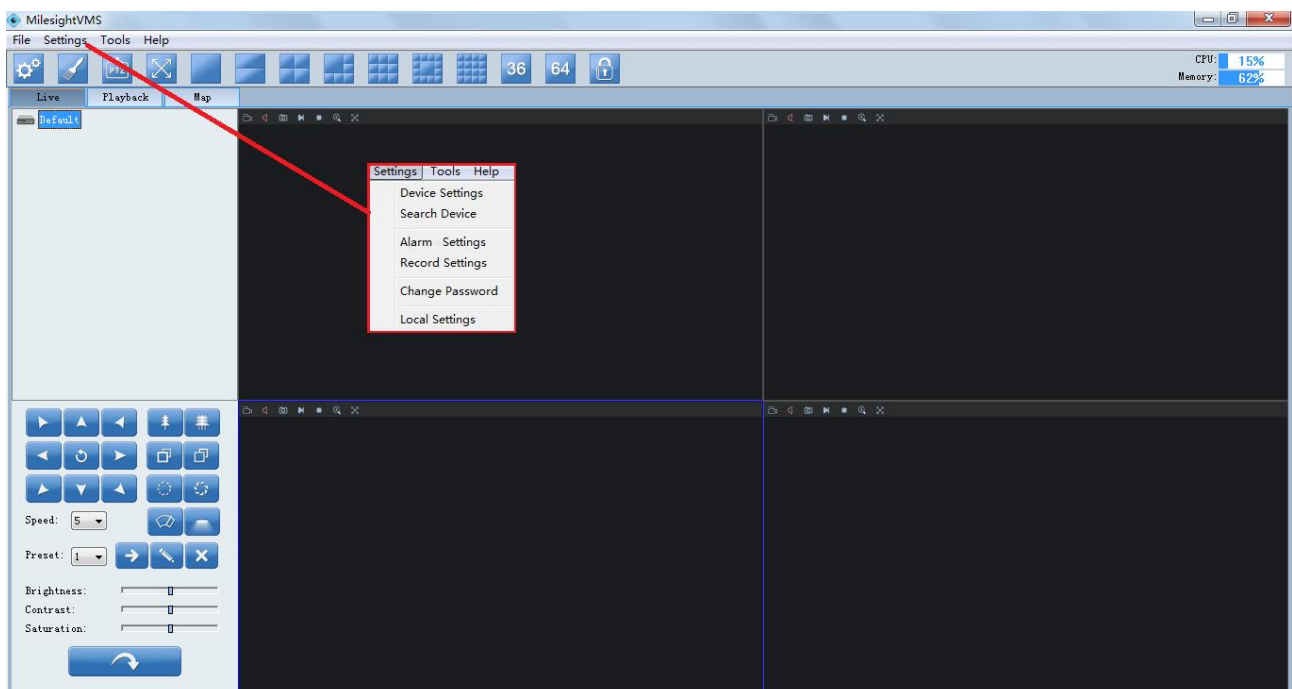


Figure 8

3.2.1 Device Settings

Click 'Device Settings' button, the pop out window is as below.

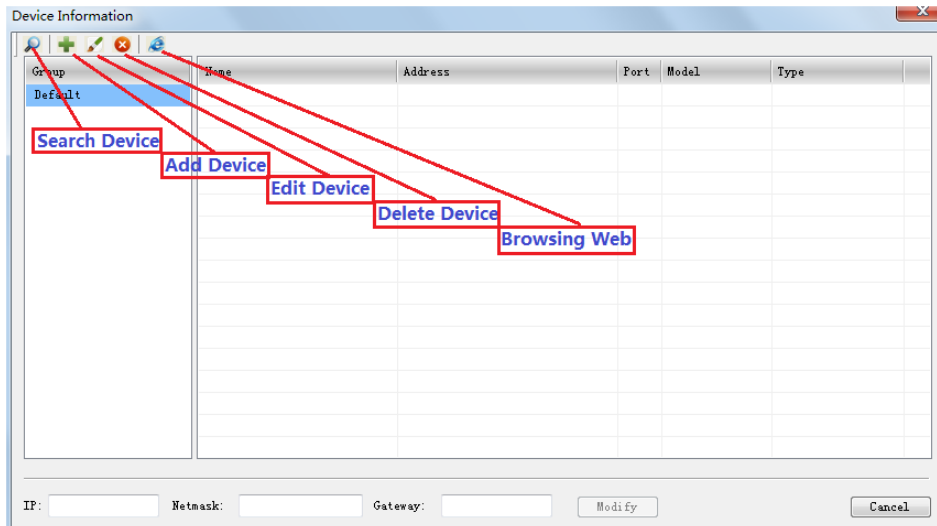


Figure 9

1. Search Device

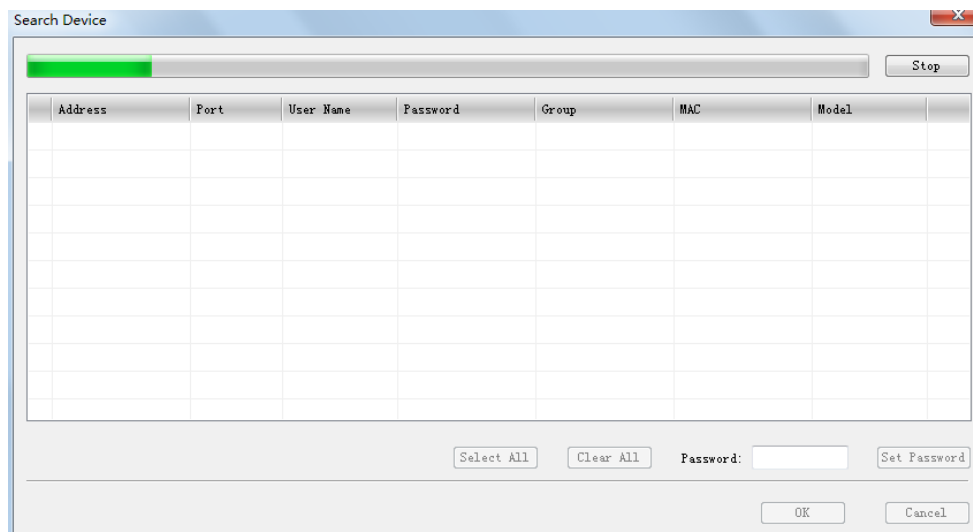


Figure 10

- Stop/Rescan** When searching the devices, you can stop it and rescan by clicking again.
- Select All** All the devices will be selected at a time.
- Clear All** All the devices will be unchecked at a time.
- Set Password** Enter the password at a time.
- OK** Click [OK] button to confirm the settings.
- Cancel** Exit quit.

2. Add Device

When the button is clicked, the window will show as below. You can add the device manually.

1) Through IP address you can add Milesight's devices and other devices supporting ONVIF.

www.milesight.com

2) Through RTSP stream you can add devices supporting RTSP.

Note: Those with * options are required.

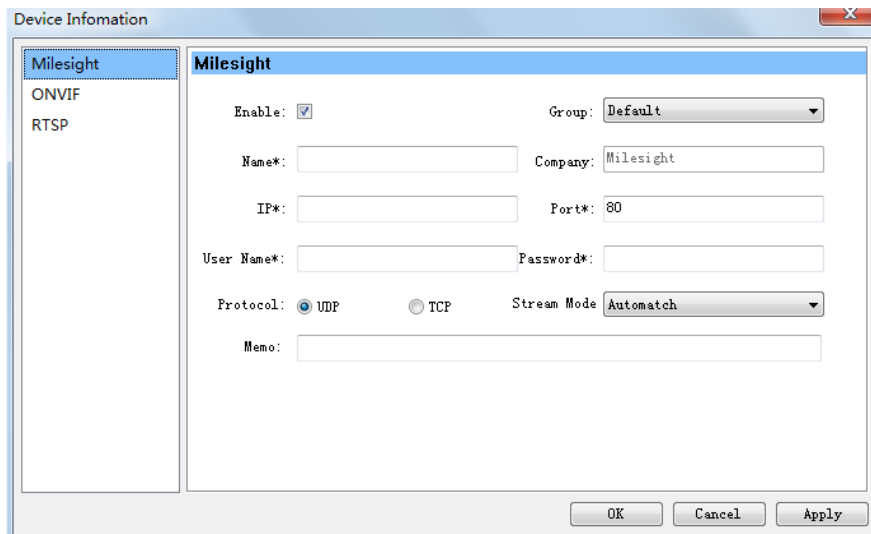


Figure 11

3. Edit Device

When the button is clicked, the window will show as below. Edit the information of the device.




Figure 12

4. Delete Device

Remove the device from MilesightVMS.

5. Browsing Web

Browse the web of the device.

3.2.2 Search Device

Please refer to [3.2.1 Device Settings->Search Device](#).

3.2.3 Alarm Settings

Set the time schedule and the area to be monitored, the alarm will start automatically if any motion is detected in the set area.

When the button is clicked, the window will show as below.

Step1: Make sure you have selected the device and the [\[Enable\]](#) button is checked.

Step2: Set the motion area to be monitored.

Step3: Set the recording schedule time on the time table.

Step4: Select a templet for each day.

Step5: Click [\[Apply\]](#) or [\[OK\]](#) to confirm the settings.

Step6: Repeat step 1 to 5 to set other devices.

Note: [Capture Image]: How many images to be captured when alarm is triggered.

[Record Video]: Change the length of each video file.(If this option is not checked, the default length of each alarm recording file is 5s)

[Play Audio]: Sound Alarm will be triggered when alarm is enabled.

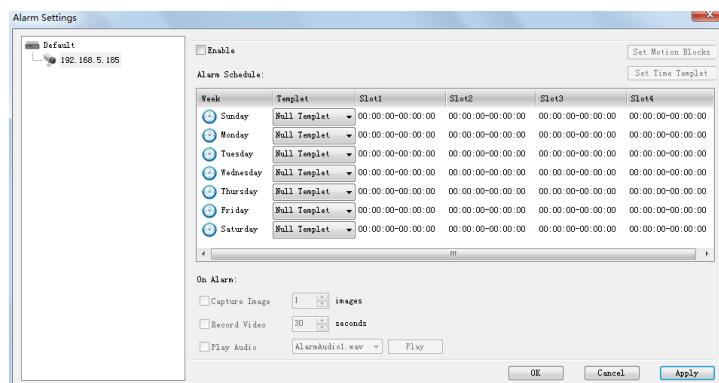


Figure 13

Set Motion Blocks

When the button is clicked, the window will show as below. Do make sure the specific device and [\[Enable\]](#) button are both selected before setting motion blocks.

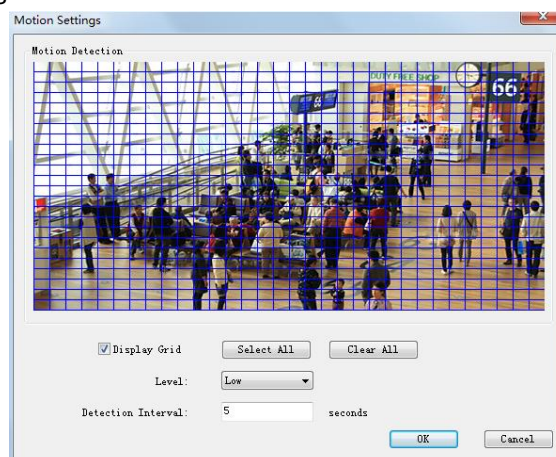


Figure 14

Select All Select all the area to be detected. Or draw certain areas by mouse by mouse.

Clear All Clear all the area.

Level Different levels to trigger alarm.

Detection Interval How often to trigger alarm.

Set Time Templet

When the button is clicked, the window will show as below. There are 9 time templets on the list.

Step1: Click the templet on the left.

Step2: Set the recording schedule time on the time table.

Step3: Click **[Save]** button to confirm the settings.

Step4: Repeat step 1 to 3 to set another Time Templet.

NOTE: Double-click the item on the left you can modify the templet's name.

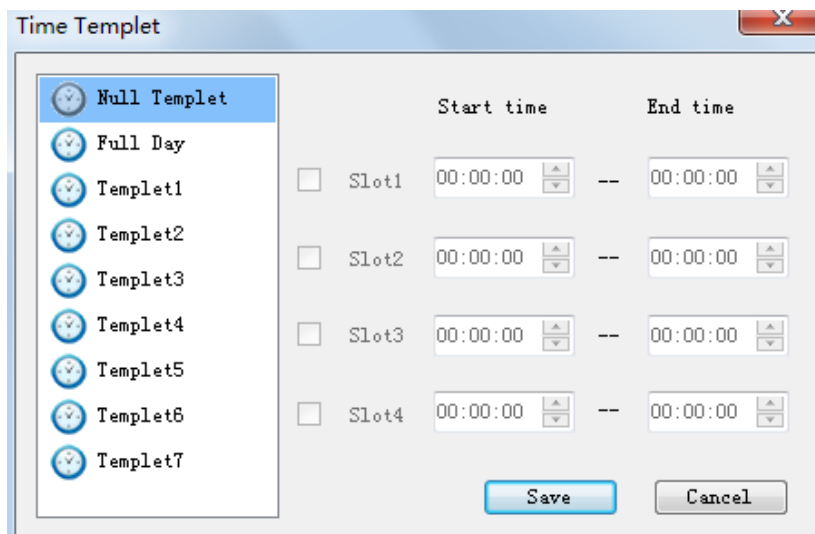


Figure 15

3.2.4 Record Settings

Set the time schedule and the recording will start automatically. The default file length is 30 minutes.

When 'Record Settings' button is clicked, the window will show as below.

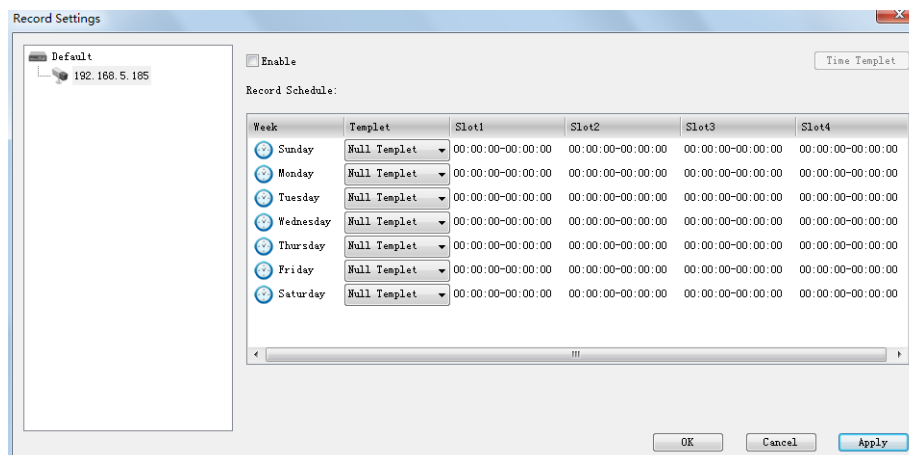


Figure 16

- Step1: Select a device to record according to the schedule.
- Step2: Check [\[Enable\]](#) button.
- Step3: Set the recording schedule time on the time table.
- Step4: Select a Time Templet for each day.
- Step5: Click [\[OK\]](#) or [\[Apply\]](#) button to confirm the settings.
- Step6: Repeat step 1 to 5 to set the other devices.

3.2.5 Change Password

Change the password for the user.

Note: The length of the password is not less than 6.

3.2.6 Local Settings

This part is mainly used for local settings. Select a disk to store the recorded files and images. You can also set how long to keep the operation logs and alarm logs here.

Note: The default disk is C:\.

When click 'Local Settings' button, the window will show as below.

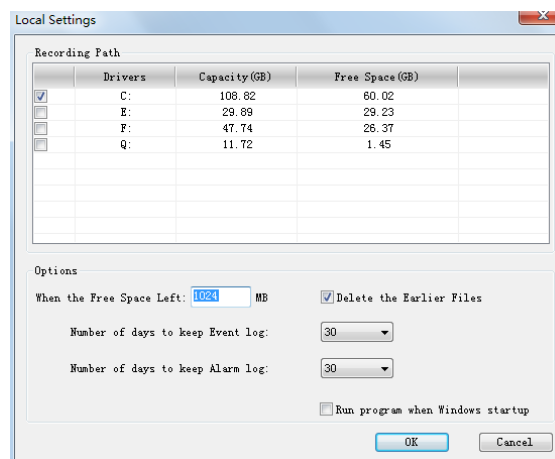


Figure 17

3.3 File

File->Lock

When click the [\[Lock\]](#) button, the GPI page will be locked. Then click it again, the window will show as below.

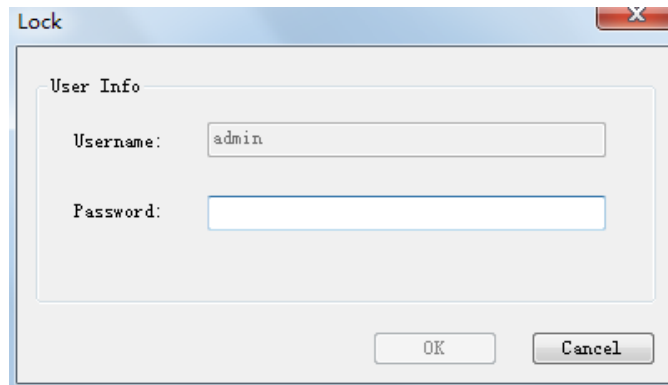


Figure 18

You have to key in Username and Password to unlock it.

File->Exit

Username and Password are required when logging out MilesightVMS. And if the [\[Auto Login\]](#) is checked, MilesightVMS will login without keying in the Username and Password next time.

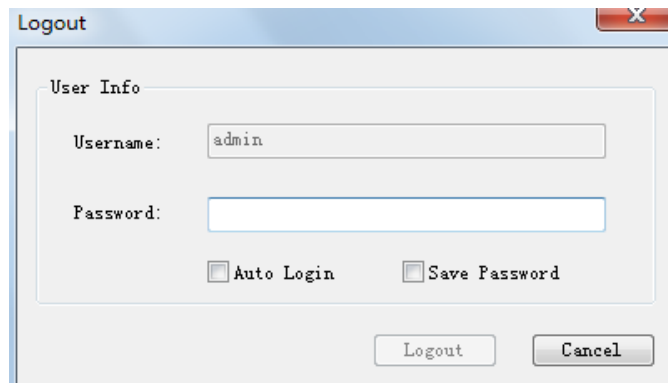


Figure 19

3.4 Tool

Tool-> Change Language

Select the language for MilesightVMS.

Tool-> Log Management

Log Management tool, you can search the operation logs and alarm logs based on a date. And the 'admin' user is enabled to perform the delete operation or export operation.

Tool-> Search Tool

Quickly search all the devices.

Tool-> Register Now

Register MilesightVMS for free. If the VMS is not activated, the video image will show with the watermark of www.milesight.com

Milesight. After it's been activated, the user is enabled to connect the devices without the watermark.

3.5 Help

MilesightVMS information can be checked here.

3.6 Toolbar

Add short cut icons for toolbar as below.



Figure 20

1. Device Settings

Please refer to [3.2.1Device Settings](#).

2. Display play toolbar

Display or hide play toolbar.

3. Hide the PTZ

Display or hide PTZ interface.

4. Fullscreen

You can view the live window in full screen mode. To return to the normal screen, press [\[Esc\]](#) button on the keyboard.

5. Live view modes

Support 1/ 2/ 4/ 6/ 9/ 13/ 16/ 36/ 64 channels playing synchronously.

6. Lock/Unlock

Lock/Unlock the MilesightVMS. For details, please refer to [3.3File](#).

Chapter IV Live view


This part is mainly used for real-time video preview and polling mode setting. The first time MilesightVMS is started, you should add some devices to MilesightVMS. You can add the device manually or by searching devices. For details please refer to [3.2.1Device Settings->Add Device](#) and [3.2.1Device Settings->Search Device](#). After the device has been added, you have to drag it to the live window to display the video.

How to connect the device

Step1: Select a device at 1 window.

Step2: Drag and drop the device to the position in the live window. The device is connected automatically and live videos will show in the selected window.

Step3: Repeat step1 to 2 to connect other devices.

Note: Please make sure the device is available .

How to disconnect the device

Step1: Select a device at 1 window.

Step2: Right click the device name. Select [\[Enable\]](#), the device will be disconnected. If you want to connect again, click it again.

Step3: Repeat step 1 to 2 to disconnect other devices.

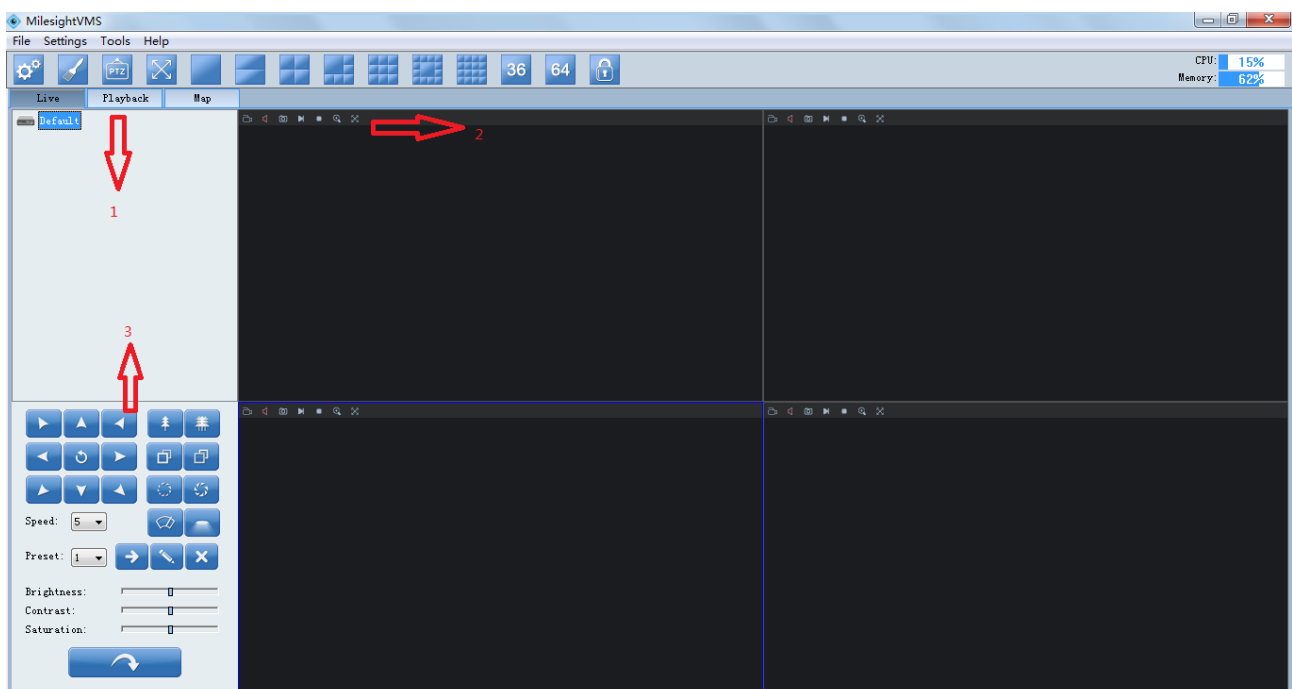


Figure 21

How to set the circle mode

A circle mode is to show different videos for a limited time in the same live view window.

Step1: Right click on the live view window and click [\[Carousel\]](#) will show as below.

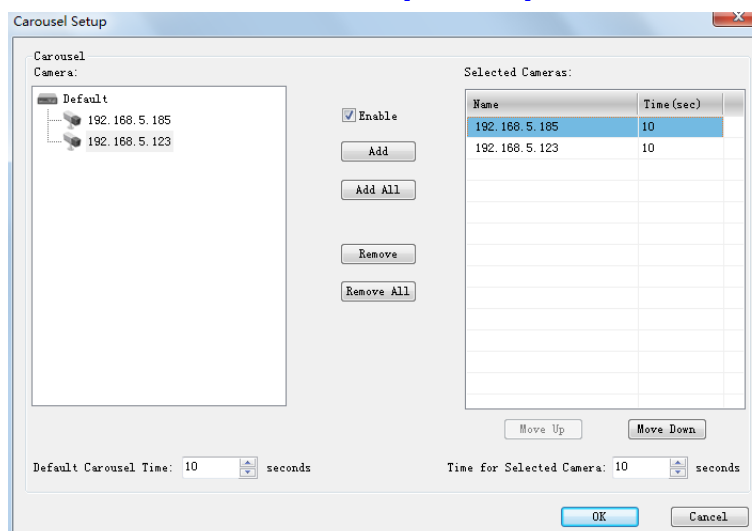


Figure 22

Step2: Click [\[Enable\]](#) button.

Step3: Then click the device on the left, click [\[Add\]](#) button to add the device to the list on the right. You can also double-click the device to add it or click [\[Add All\]](#) button to add all devices at a time.

Step4: Double-click the device on the list to remove it from circle mode.

- Note:**
- 1) [\[Move Up\]](#) / [\[Move Down\]](#) to change the polling order of the device.
 - 2) Default Carousel Time: The default carousel time of each device is 10 seconds.
 - 3) Time for Selected Camera: Click the device on the list to set carousel time for the device (5s at least).
 - 4) Add 10 devices in a circle mode at most.

4.1 Device Tree Window

This part is to display the added device name. Click the right mouse button will show as follow.

[Pop-up Menu:](#)






Device Settings	Device Settings	Please refer to 3.2.1Device Settings .
Search Device	Search Device	Please refer to 3.2.1Device Settings->Search Device .
Device Information	Device Information	Please refer to 3.2.1Device Settings->Edit Device .
Browsing Web	Browsing Web	Please refer to 3.2.1Device Settings->Browsing Web .
<input checked="" type="checkbox"/> Enable	Enable	Connect or Disconnect the device.  is available and  is unusable.
Play	Play	Display.
Play All	Play All	Show the videos of all available devices.
Stop All	Stop All	Stop showing all the videos.

Figure 23






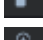
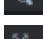

- Note:**
- 1)  is available,  is unusable,  is failed to connect.
 - 2) When the device is failed to connect successfully the first time, it will try to reconnect at an increasing intervals until it succeed. If it is failed to connect for a long time, drag it into the view to play again. You can also click the device and enable it, and then enable it again, it will connect

successfully again.

4.2 Live toolbar



Figure 24

	<i>Record</i>	Record manually. And this icon will turn into  .
	<i>Audio</i>	Play Audio or stop it. (Audio is unusable in the polling live view window)
	<i>Snapshot</i>	Take a snapshot when live-preview.
	<i>Display</i>	Display.
	<i>Stop Display</i>	Stop showing the videos.
	<i>Zoom In</i>	Enable to zoom in on a specific area of video image with mouse wheel.
	<i>Fullscreen</i>	You can view the live window in full screen mode. To return to the normal screen, press [Esc] button on the keyboard.

4.3 Live view workspace

This part is use for displaying the live view.

Click the right mouse button will show as follow.

Pop-up Menu:

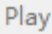

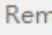
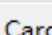
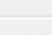
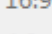
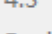
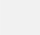

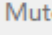
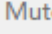
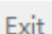
	Play		
	Stop	<i>Play</i>	Display.
	Remove	<i>Stop</i>	Stop showing the videos.
	Carousel	<i>Remove</i>	Remove the device from the live window.
	16:9	<i>Carousel</i>	Set the live view window into a circle mode.
	4:3	<i>16:9</i>	The original screen size can adjust to 16:9.
	Resize	<i>4:3</i>	The original screen size can adjust to 4:3.
	Mute	<i>Resize</i>	The original screen size.
	Mute All	<i>Mute</i>	Stop audio.
	Mute Other	<i>Mute All</i>	Stop playing all the audio.
	Exit Fullscreen	<i>Mute Other</i>	Stop playing other audio.
	Fullscreen	<i>Exit Fullscreen</i>	Return to the normal screen.
		<i>Fullscreen</i>	You can view the live window in fullscreen mode.

Figure 25

4.4 PTZ control

This part is for flexibility of remote pan/tilt/zoom through operator control. It is possible to zoom in on small distant objects with exceptional clarity. The user can easily track objects with high precision by using a mouse or joystick.



Figure 26

<i>Speed</i>	PTZ rotation speed control.
<i>Preset</i>	Select a device.
<i>Goto</i>	Operate the selected device.
<i>Set</i>	Set the new device.
<i>Clear</i>	Clear old device.
<i>Brightness</i>	A brighter scene appears if a higher level of brightness has been selected.
<i>Contrast</i>	The difference in color and light between parts of an image.
<i>Saturation</i>	A vivid scene appears if a higher level of saturation has been selected.
<i>Default</i>	The default values of Brightness/Contrast/Saturation.

Chapter V Playback

In this part, you can search and play back the recorded files of a selected IP device. When click [\[Playback\]](#) button, the window will show as below.

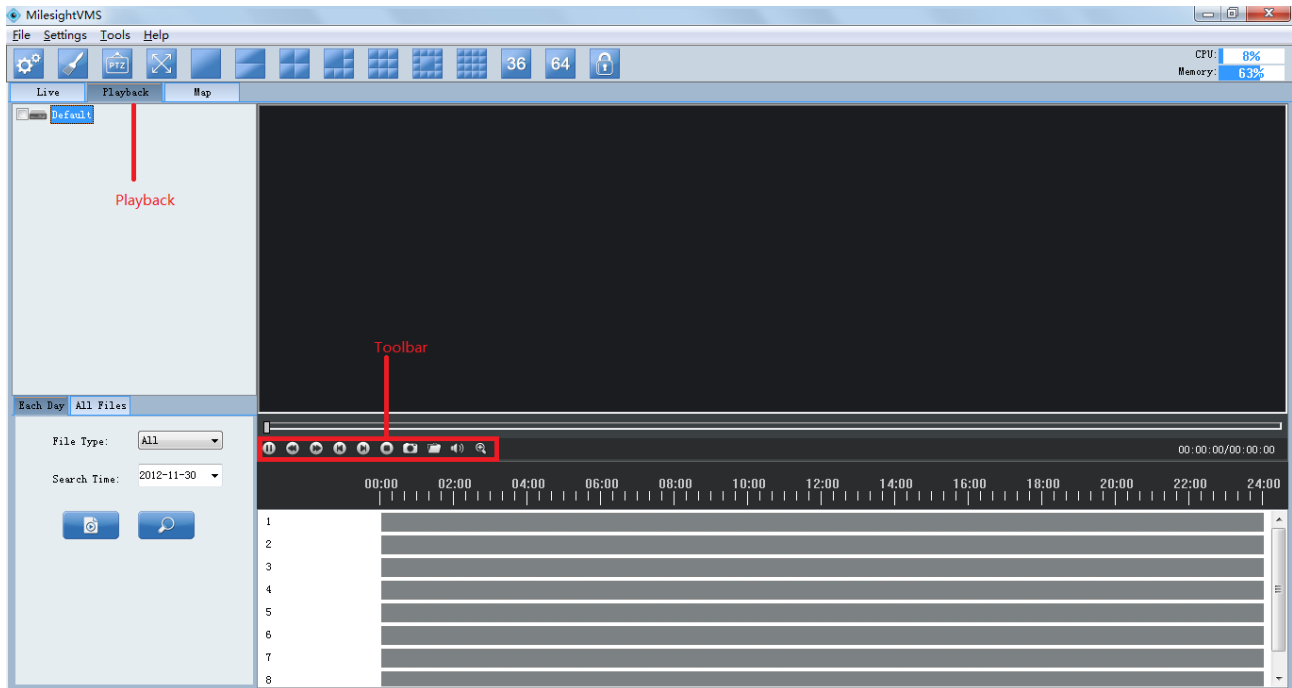


Figure 27

How to replay the recorded files

There are two ways to search the recorded video files. One Way is to search only by one day. And the other is to search recording files of multiple days. Details are as below.

Method 1:

Step1: Select which device to replay on the left, and then check it.

Step2: Select a date and the file type you want to search. The File Type includes: All / Manual / Motion / Schedule.

Step3: Click [\[Search\]](#) button.

Step4: Click the file on the list and it will begin to play the recorded files.

Play toolbar










Pause/Play Pause video or resume it.




Slow down Slow down to catch details.

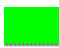



Speed up Speed up to skip some details.

-  **Previous** Play the previous file.
-  **Next** Play the next file.
-  **Stop** Stop play.
-  **Snapshot** Take a snapshot when playing the file.
-  **File Path** Open the folder of the recorded files.
-  **Play Audio** Play or stop audio.(The default state is to play audio)
-  **Zoom In** Enable to zoom in on a specific area of video image with mouse wheel.

Color of recorded files on the list.

 **Red** Refer to those alarm type recorded files.

 **Green** Refer to those manually recorded files.

 **Blue** Refer to those schedules recorded files.

Operative Skills

Timelines will help you find the correct videos when there are too many files on the list. It's easy to zoom out the area by scrolling the mouse wheel to find exactly the incident you are looking for.

Take a file near 10:00 for example, when the position of mouse is between 08:00 and 10:00, then scroll up the mouse wheel, the position of this file will show as follow. Scroll down to turn back.

You can hold down the left mouse and drag the mouse left or right(between the intervals from 00:00 to 24:00) to get the exact recorded files.

Begin:



Figure 28

Scroll up 1:



Figure 29

Scroll up 2:



Figure 30

Scroll up 3:

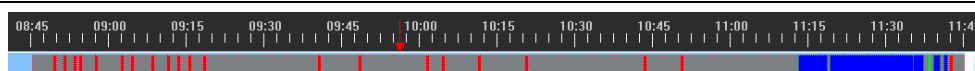


Figure 31

Scroll up 4:

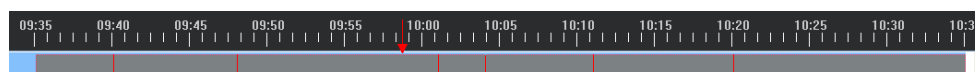


Figure 32

Method 2:

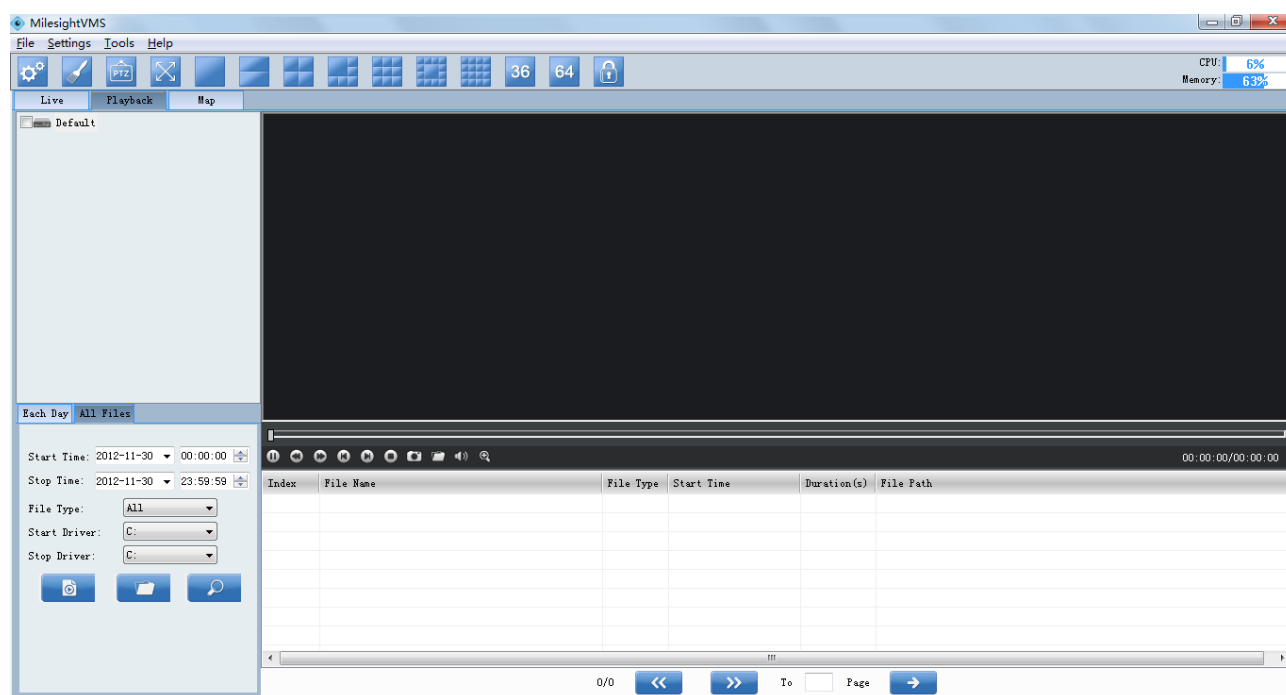


Figure 33

Step1: Select which device to replay on the left, and then check it.

Step2: Select the start time, end time, file type, start driver and end driver you want to search. The File Type includes: All / Manual / Motion / Schedule.

Step3: Click [\[Search\]](#) button. All the files will be listed by page and you can double-click the files to play it. Download or delete the files by right clicking on the list.

Note:

Open File: Choose to play any *.avi file.(Needn't choose a camera first)

Open Folder: Choose to play all the *.avi files under the folder. (Needn't choose a camera first)

Chapter VI Map

In this part, you can add an electronic map and different cameras to the map. When click [\[Map\]](#) button, the window will show as below.

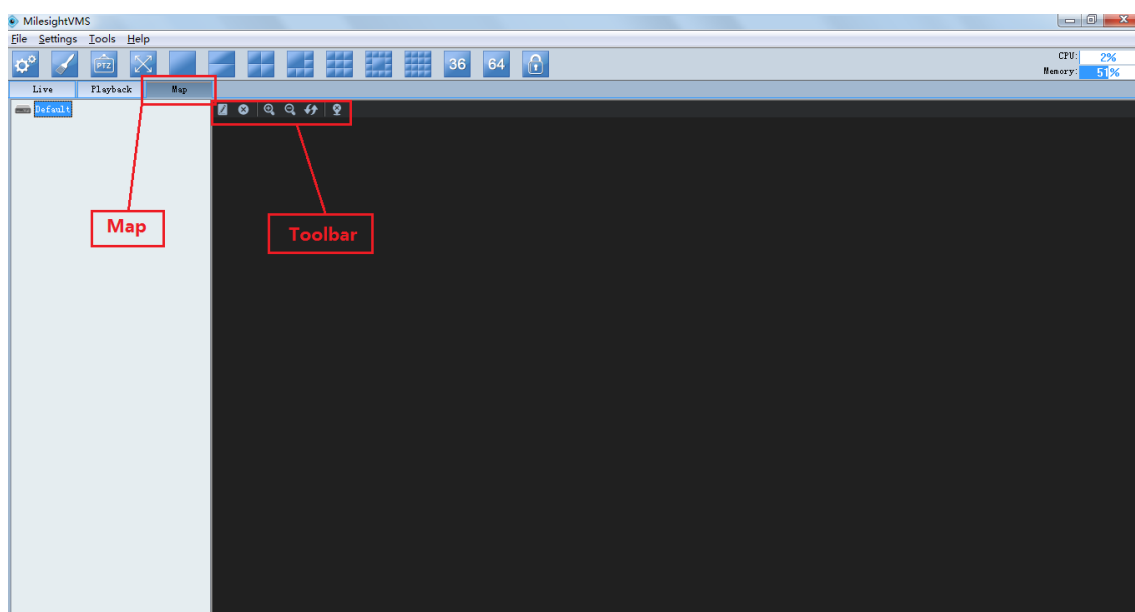



Figure 34

6.1 Toolbar

 **Modify** When [\[Modify\]](#) button is clicked, the window will show as below. Different image formats such as [bmp](#) / [gif](#) / [png](#) / [jpg](#) are supported.

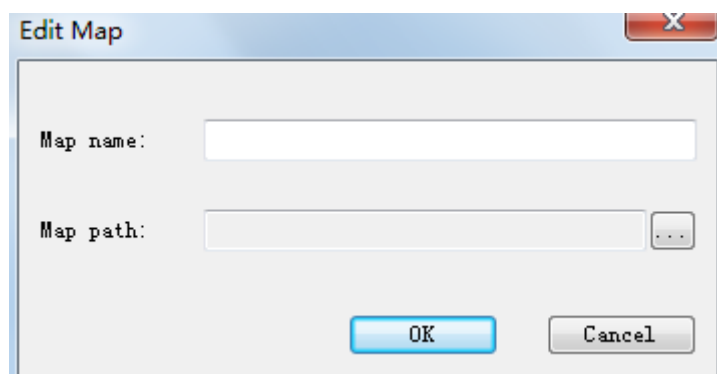


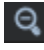




Figure 35

 **Delete Map** Remove the map from the MilesightVMS.

 **Zoom In** Enlarge the picture to see more details.

 **Zoom Out** Zoom out of the map.

 **Reset** Return the map to its original size.

 **Delete Hot** Remove the camera from the map.

6.2 Pop-up Menu

Right-click the map (anywhere except the devices). A menu will pop-up as below.

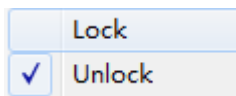


Figure 36

Lock If the map is locked, you can do nothing with the map but zoom in or zoom out.

Unlock You can do anything if the map is unlocked.

Right-click the device. A menu will pop-up as below.

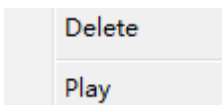


Figure 37

Delete Remove the camera from the map.

Play Live preview.

6.3 Add the hot

Click the device and drag it to the E-map, then it will be added successfully. After the device has been added on the E-map, you can double click on the hot to play.



Figure 38

Chapter VII Service

Milesight Technology Co., Ltd provides customers with timely and comprehensive technical support services. End-users can contact your local dealer to obtain technical support. Distributors and resellers can contact directly with Milesight for technical support.

Technical Support Mailbox: support@milesight.com

Web: <http://www.milesight.com>

Online Problem Submission System: <http://www.milesight.com/service/feedback.asp>

Address: Room 202-2, No.21 Wanghai Road, 2nd Software Park, Xiamen, China

Zip Code: 361006

TEL: +86-592-5922772

FAX: +86-592-5922775

[Finish]